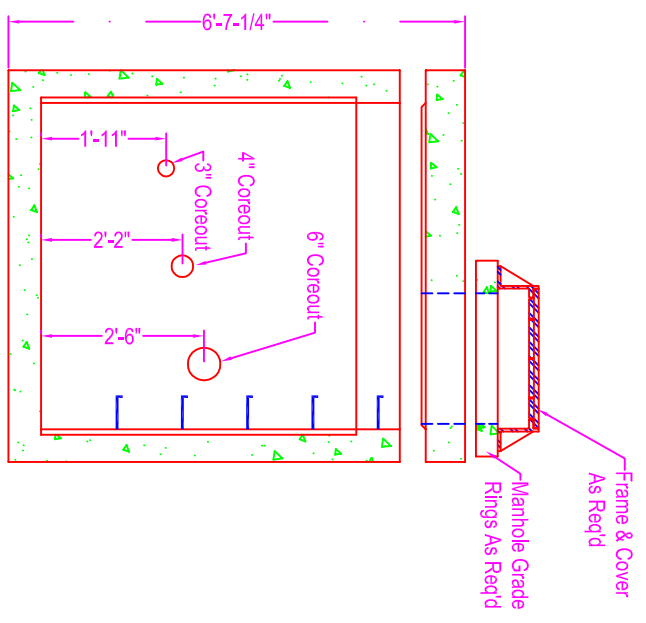
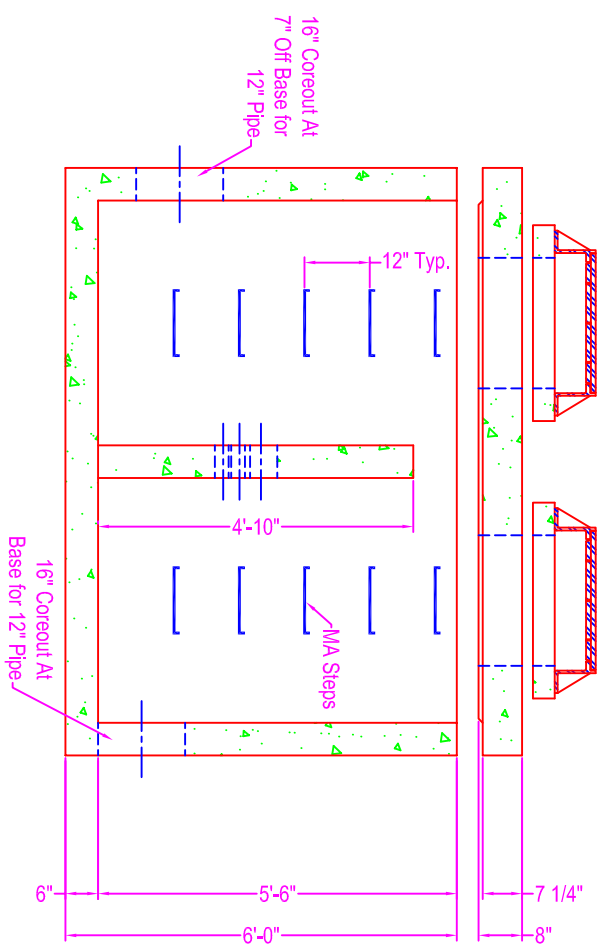
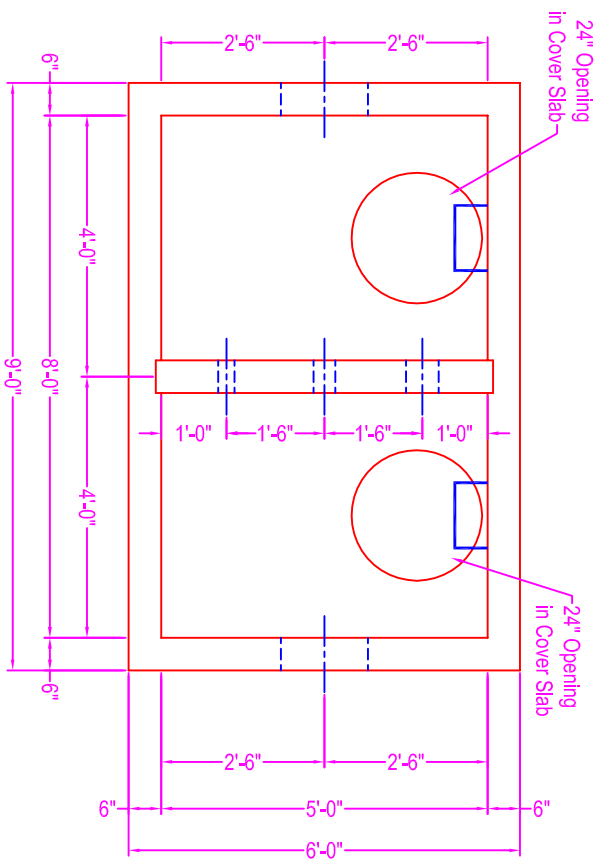


OUTLET STRUCTURE

NOTES:

CONCRETE: 5000 psi @ 28 days
 REF: #4 rebar @ 8" o.c. each way in base & walls
 (2" conc cover in all directions)
 #5 rebar @ 8" o.c. each way in cover slab
 (1-1/2" conc cover from bottom up)
 Rebar Diamond around all openings throughout structure
 OPENINGS: corecut openings as shown on drawing
 STEPS: MA Industries polypropylene steps
 CASTING: Neenah #R-1554 frame & cover
 SHIMS: As req'd

Weight:
 Base & Walls: 18,060 #
 Cover: 5,600#



Zeiser
Wilbert
 VAULT, INC.
 CONCRETE PRODUCTS

750 Howard Street Elmira, NY 14904
 Fax: (607) 737-0291
 Phone: (607) 733-0568
 1-800-472-4335

Title: Outlet Structure

Scale: Not To Scale

Drawn By: JPS
 Drawing No.: 05130800
 Date: 5-13-08