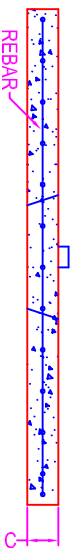
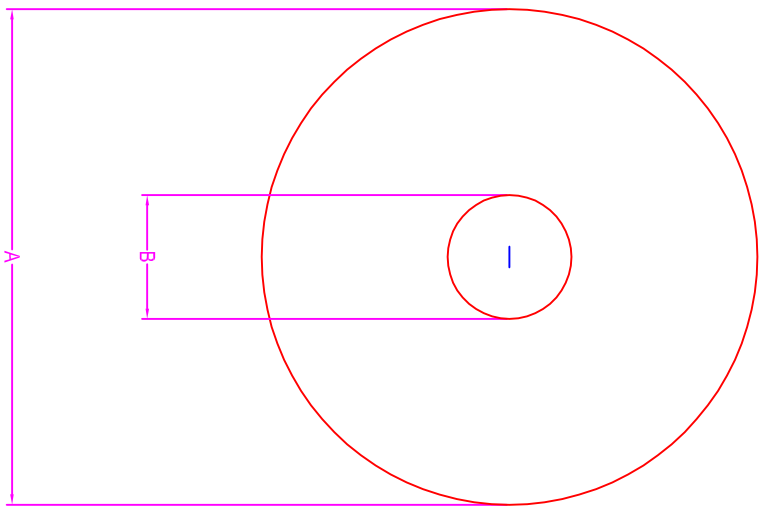


# DRYWELL COVERS

**NOTES:**

CONCRETE: 5000 psi @ 28 days  
 REF.: H-20 #7 rebar @ 8" o.c. each way  
 Heavy Duty #4 rebar @ 8" o.c. each way  
 Standard #3 rebar @ 12" o.c. each way



TYPE	A = Dia. of Cover	B = Dia. of Center Plug	C = Thickness of Cover
8'-0" H-20	8'-0"	2'-0"	9"
8'-0" Heavy Duty	8'-0"	2'-0"	9"
8'-0" Regular	8'-0"	2'-0"	6"
6'-0" Regular	6'-0"	2'-0"	6"
5'-0" Heavy Duty	5'-6"	2'-0"	8"
5'-0" Regular	5'-0"	2'-0"	6"
4'-0" Regular	4'-0"	1'-8"	6"
4'-0" Regular	4'-0"	NONE	6"
42" Regular	42"	NONE	4"

**Zeiser**

**Wilbert**  
VAULT, INC.

CONCRETE PRODUCTS

750 Howard Street Elmira, NY 14904

Fax: (607) 737-0291

Phone: (607) 733-0568

1-800-472-4335

**Title: Drywell Covers**

Drawn By: JPS

Drawing No.: 1039

Scale: Not To Scale

Date: 12-16-99