

EJLW EAST JORDAN
IRONWORKS EST. 1983
 800-626-4653
 www.ejlw.com
 MADE IN USA

PRODUCT NUMBER
PAMF

CATALOG NUMBER
 N/A

PA "M" FRAME

LOAD RATING
 HEAVY DUTY

COATING
 DIPPED

ESTIMATED WEIGHT
 FRAME: 142 LBS 64kg

MATERIAL SPECIFICATION
 FRAME -- STEEL
 ASTM A36

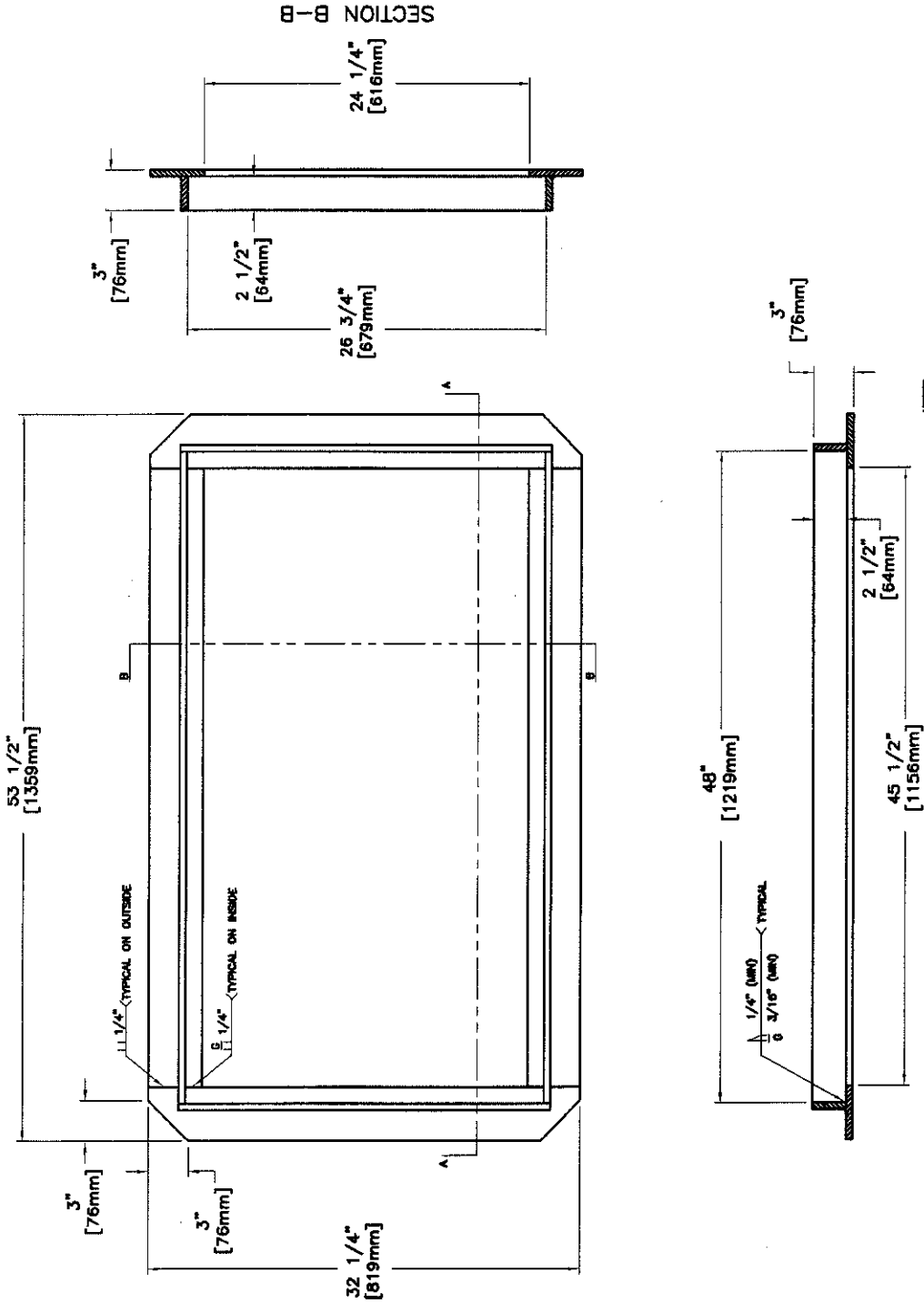
OPEN AREA
 N/A

✓ DESIGNATES MACHINE SURFACE

DRAWN DATE
 BDD 11/17/04

LAST REVISED DATE
 CJC 07/03/07

REFERENCE INFORMATION
 OOOXXXXXX



- NOTES**
1. THIS SHEET SPECIFIES THE DIMENSIONS REQUIRED FOR FABRICATING AND WELDING QUALITY. DIMENSIONS SHALL BE SUPPLIED BY A MANUFACTURER LISTED IN BULLETIN 10 SHALL BE PROVIDED FOR A MILLING IS LISTING. THE MATERIALS AND TESTING DIVISION, BUREAU OF CONSTRUCTION AND MATERIALS FOR HEAVY AND TESTING.
 2. FRAMES SHALL BE MADE OF STRUCTURAL STEEL.
 3. WELDES SHALL BE IN ACCORDANCE WITH THE REQUIREMENTS OF FABRICATING AND WELDING QUALITY. THE WELDING SHALL BE NOT RECOMMENDED TO BE AMERICAN INSTITUTE OF STEEL CONSTRUCTION (AISC) CERTIFIED.

SECTION A-A

CONFIDENTIAL: This drawing is the property of East Jordan Iron Works, Inc. and embodies confidential information, trade secret information, and/or know how that is the property of East Jordan Iron Works, Inc. © Copyright 2007 East Jordan Iron Works, Inc.