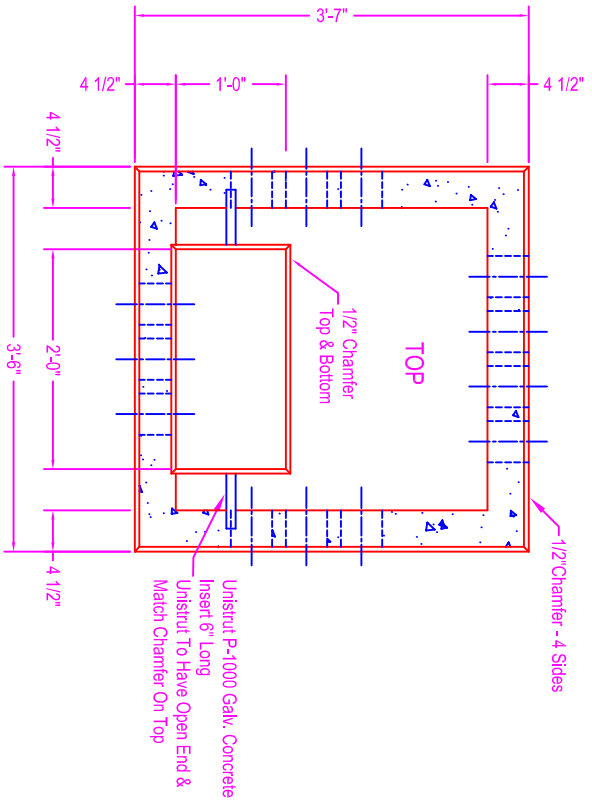
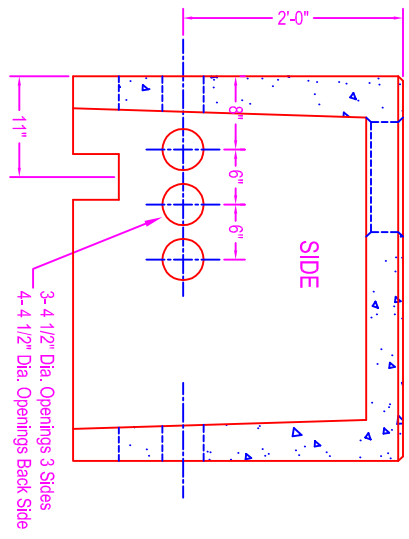
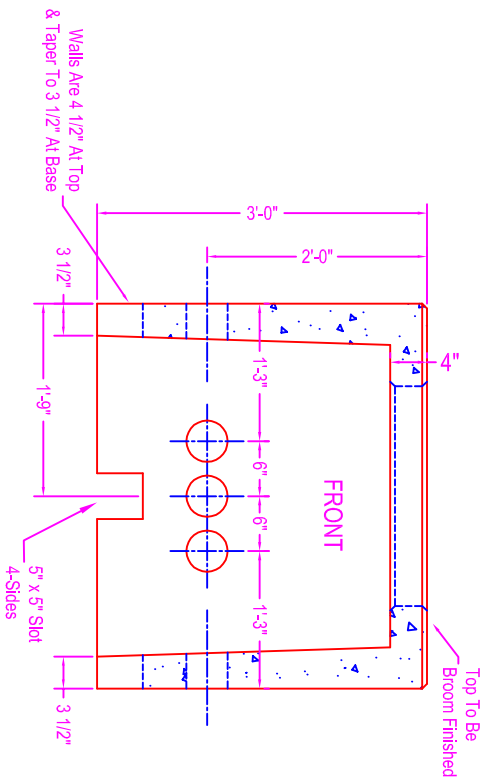


TRANSFORMER VAULT

145-101



NOTES:
 CONCRETE: 5000 psi @ 28 days
 REF: #6x6 10/10 wire mesh or as req'd
 for strength mesh to be overlapped at
 seams in top & sides
 Top to be parallel with bottom
 Top to be brush finished



Zeiser
Wilbert
 VAULT, INC.
 CONCRETE PRODUCTS

750 Howard Street Elmira, NY 14904
 Fax: (607) 737-0291
 Phone: (607) 733-0568
 1-800-472-4335

Title: Trans Vault 145-101

Scale: Not To Scale

Drawn By: JPS
 Drawing No.: 1062
 Date: 3-10-00