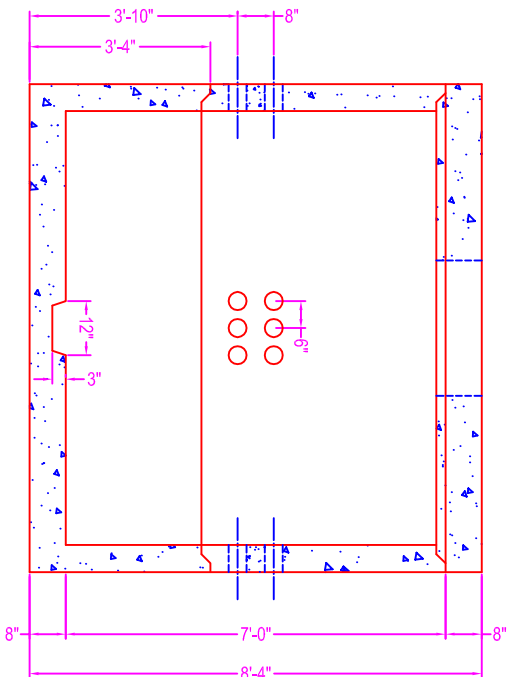
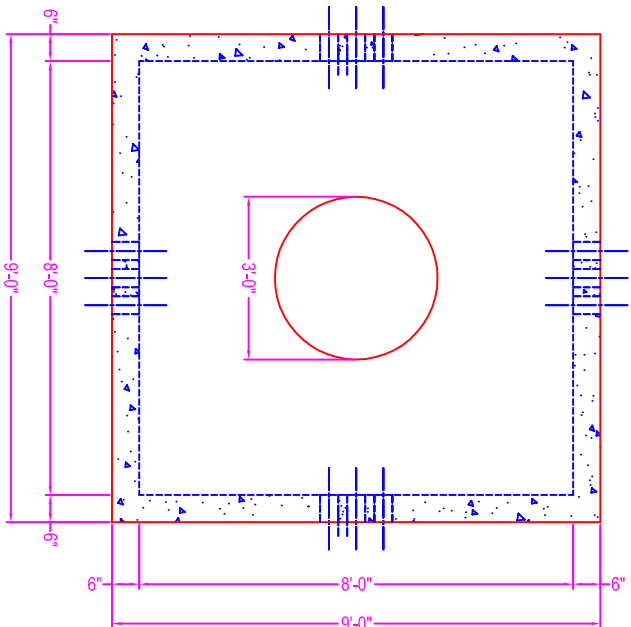


This drawing is a typical tel-comm manhole. ZMV can build to job specifications.

TEL - COMM MANHOLE

NOTES:

- CONCRETE: :5000 psi @ 28 days
- REF.: #4 rebar @ 8" o.c. each way
In walls and base
- #5 rebar @ 8" o.c. each way
In bottom mat of cover
- #4 rebar @ 12" o.c. each way
In top mat of cover
- 4" terminators 6 ea in all sides
- 12" x 3" sump centered in base
- 3'-0" opening in cover



Zeiser

Wilbert
VAULT, INC.

CONCRETE PRODUCTS

750 Howard Street Elmira, NY 14904

Fax: (607) 737-0291

Phone: (607) 733-0568

1-800-472-4335

Title: TEL-COMM MANHOLE

Scale: Not To Scale

Drawn By: JPS

Drawing No.: 1069

Date: 11-3-99