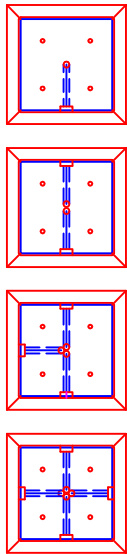


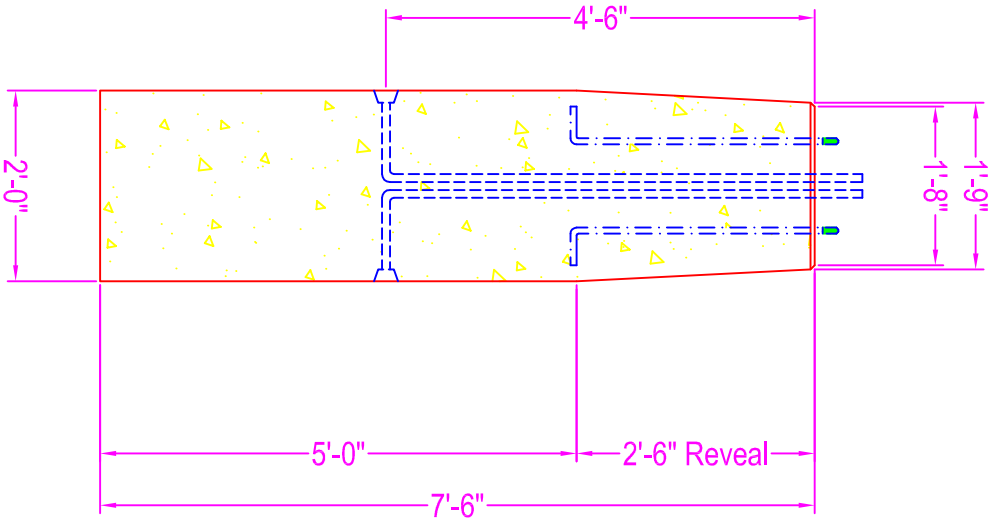
Typical Conduit Directions



TAPERED LIGHT POLE BASE

NOTES:

- CONCRETE: 5000 psi @ 28 days
- REF: 8ea - #5 rebar in vertical direction
- #4 rebar @ 12" o.c. in horizontal direction
- 3" clearance form all sides
- CHAMFER: all exposed edges
- Contractor to supply ZWV with all conduits, anchor bolts, and templates



Zeiser

Wilbert
VAULT, INC.

CONCRETE PRODUCTS

750 Howard Street Elmira, NY 14904

Fax: (607) 737-0291

Phone: (607) 733-0568

1-800-472-4335

Title: Tapered Light Pole Base

Drawn By: JPS

Drawing No.: 02140900

Scale: Not To Scale

Date: 2-24-09