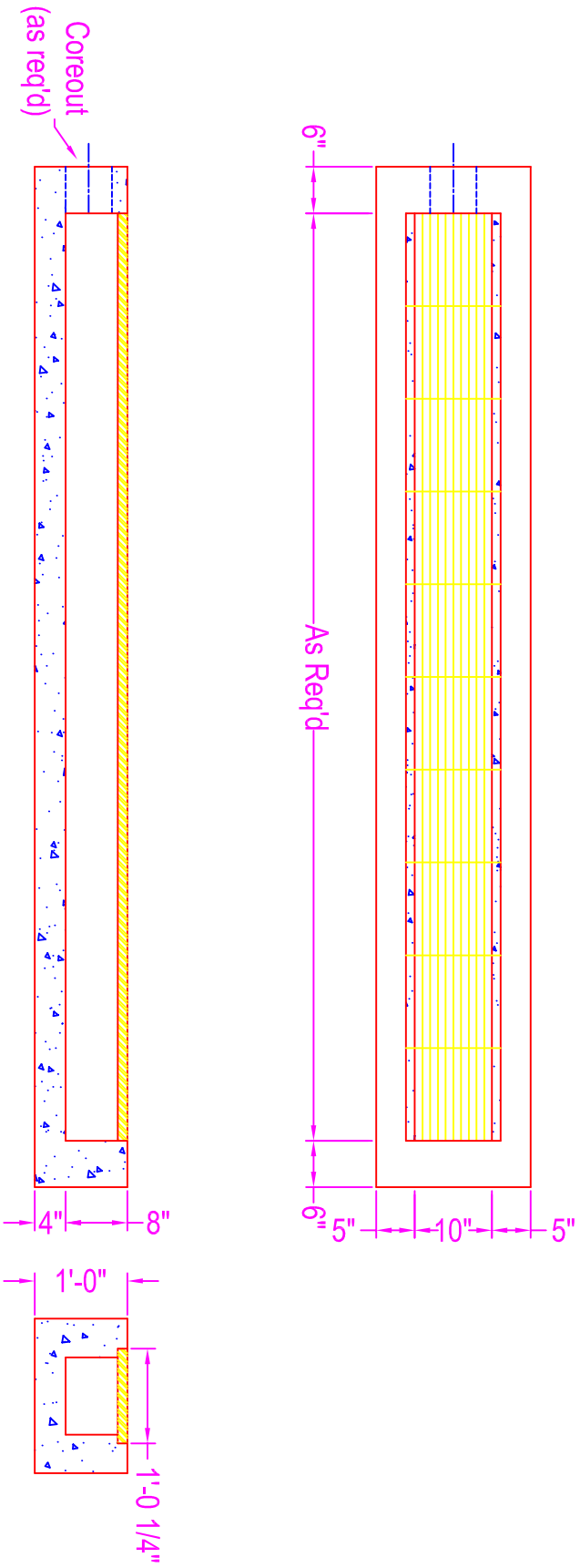


# TRENCH DRAIN

**NOTES:**

- CONCRETE: 5000 psi @ 28 days
  - REF: #4 rebar @ 8" o.c. each way in all
  - OPENINGS: size, type & location as req'd
  - GRATING: 1-1/4" thick; banded & painted black
  - designed for car & light truck traffic
- Please be aware:  
drawing depicts ZMW stock trench drain  
we are able to manufacture to desired spec.



 <b>Zeiser</b> <b>Wilbert</b> VAULT, INC. CONCRETE PRODUCTS	750 Howard Street Elmira, NY 14904 Fax: (607) 737-0291 Phone: (607) 733-0568 1-800-472-4335
---	--

<b>Title: TRENCH DRAIN</b>
<b>Scale: Not To Scale</b>

Drawn By: JPS
Drawing No.: 1076
Date: 4-20-00