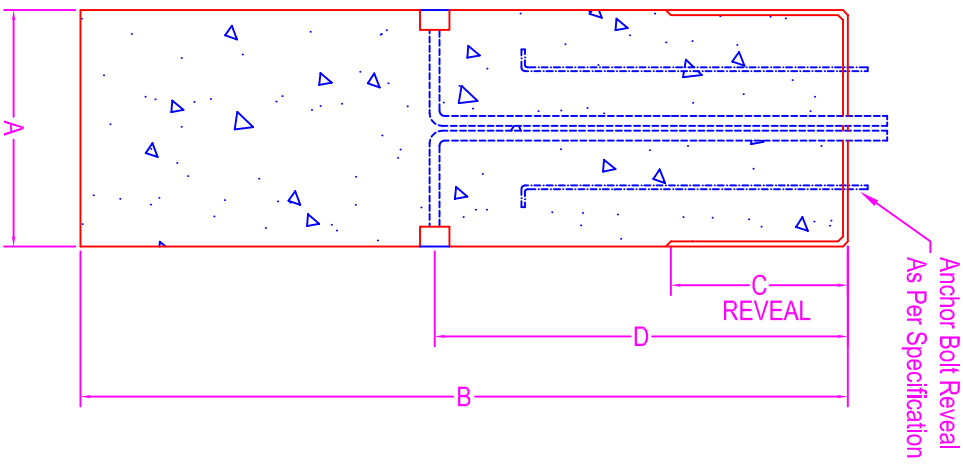
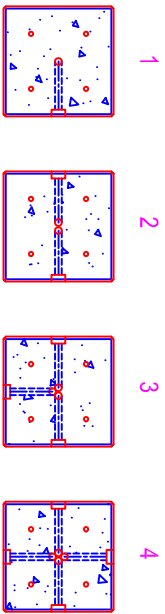


Typical Conduit Directions (or as per spec.)



LIGHT POLE BASE

NOTES:

- CONCRETE: 5000 psi @ 28 days
- REF: #4 rebar @ 10" o.c. vert.
- #4 rebar @ 12" o.c. horiz.
- w/ 2" clearance from all sides
- Chamfer Edges
- All Dimensions to be Provided by Contractor
- As Well as Conduit, Template, and Anchor Bolts
- Light Pole Can Be Manufactured To Specific Design

DIMENSIONS:

- Anchor Bolt Reveal =
- A =
- B =
- C =
- D =

Zeiser
Wilbert
 VAULT, INC.
 CONCRETE PRODUCTS

750 Howard Street Elmira, NY 14904
 Fax: (607) 737-0291
 Phone: (607) 733-0568
 1-800-472-4335

Title: Square Light Pole Base

Scale: Not To Scale

Drawn By: JPS
 Drawing No.: 1067
 Date: 3-14-00