

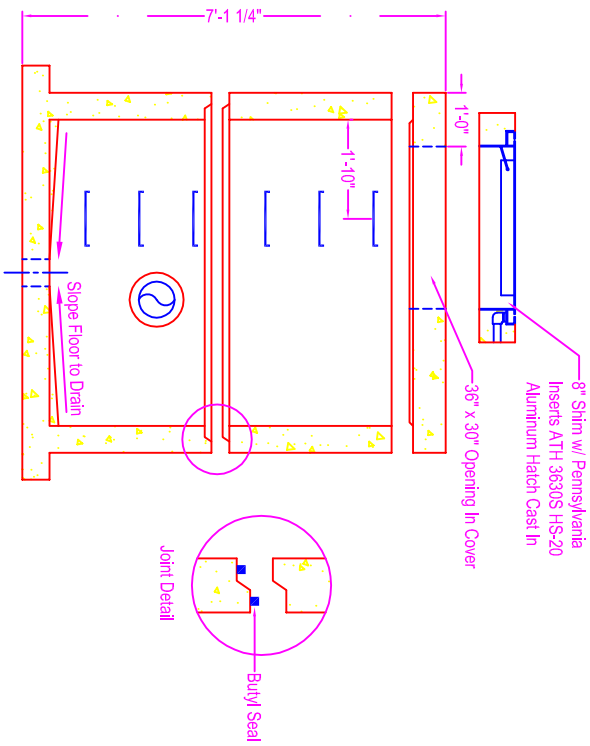
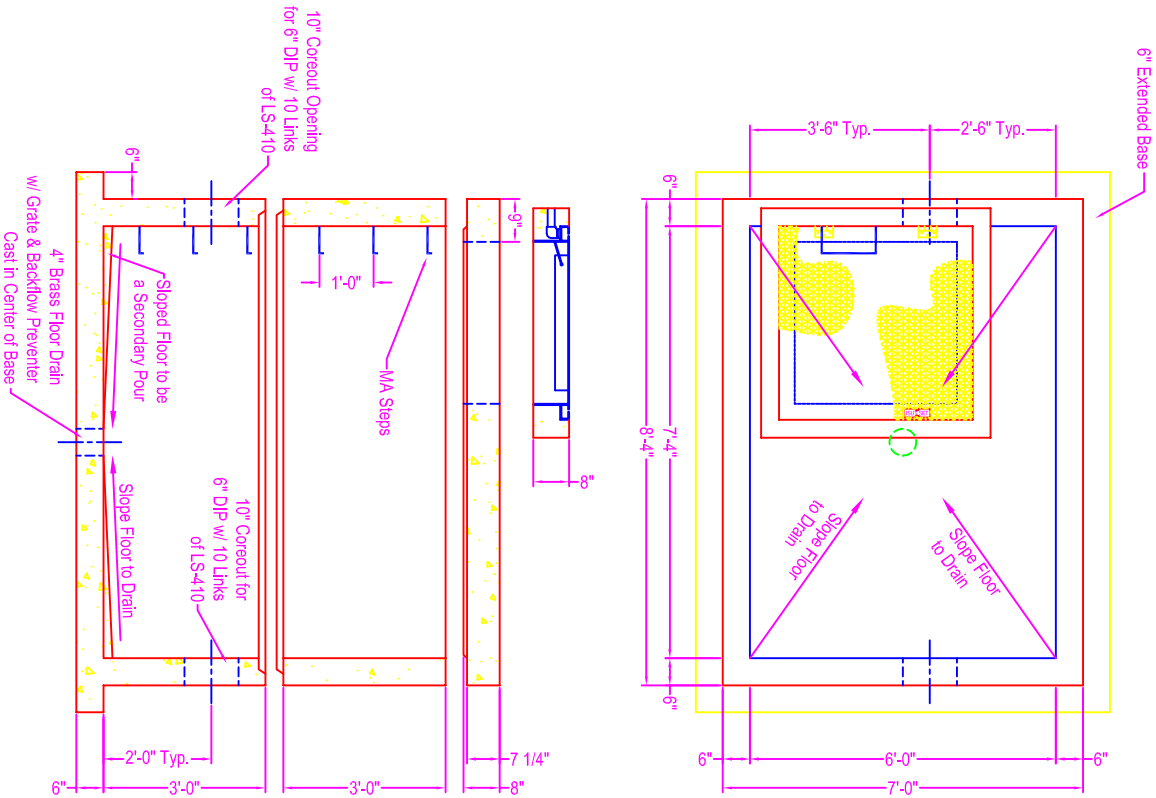
METER PIT

NOTES:

- CONCRETE: 5000 psi @ 28 days
- REF: rebar grade 60 ASTM A615
- Cover Slab - #6 rebar @ 6" o.c. in short direction
- Cover Slab @ 10" o.c. in long direction
- (1-1/2" conc cover from bottom up)
- Riser #1 - #4 rebar @ 12" o.c. each direction
- (2" conc cover from inner core)
- Base Riser - #4 rebar @ 6" o.c. each direction
- (2" conc cover from inner core)
- Base Slab - #4 rebar @ 6" o.c. each direction
- (2" conc cover from top down)
- Additional Rebar - #4 rebar bent "L"s from base to walls @ 6" o.c. (18" x 24" tails)
- #4 rebar diamond around all wall openings
- extra reinforcing around opening in cover slab
- OPENINGS: corecut pipe openings w/ Link Seal as shown on detail - see spec sheet for Link Seal
- JOINT SEALANT: Con-Seal CS-102 butyl seal @ joints
- STEPS: MA Industries polypropylene steps - see spec sheet
- HATCH: Pennsylvania Inserts ATH 3630S - see spec sheet
- COATING: coat exterior w/ Con-Seal CS-55
- LIFTERS: Sink-It handles cast in walls and top of cover slab

Weights:

- Cover Slab - 6,600 #
- Riser #1 - 7,000 #
- Base & Riser - 14,000 #



Zeiser
Wilbert
VAULT, INC.
CONCRETE PRODUCTS

750 Howard Street Elmira, NY 14904
Fax: (607) 737-0291
Phone: (607) 733-0568
1-800-472-4335

Title: Meter Pit
Scale: Not To Scale

Drawn By: JPS
Drawing No.: 06160900
Date: 6-19-09