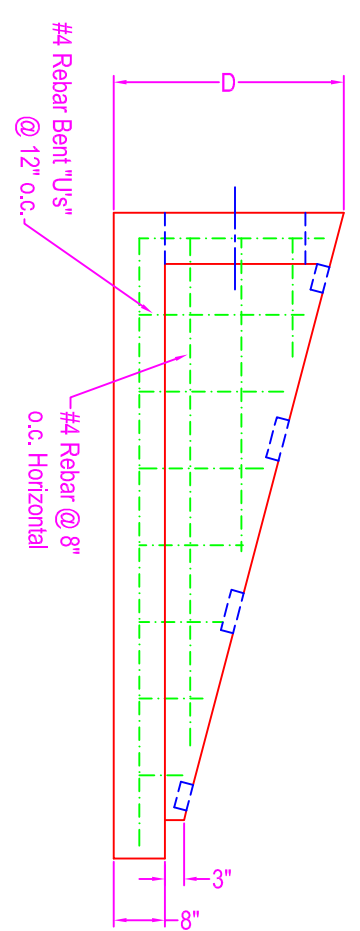
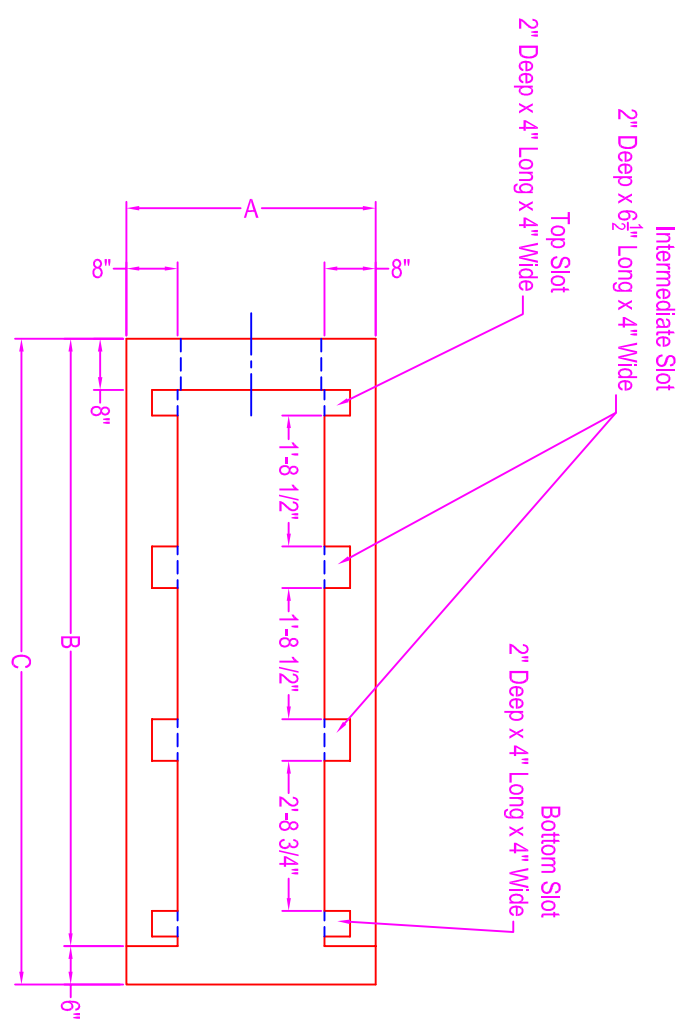


SAFETY HEADWALL


NOTES:

- CONCRETE: 5000 psi @ 28 days
- REF: #4 rebar bent U's from base to walls 8" o.c.
- #4 rebar horizontal bars @ 8" o.c.
- OPENING: as required for pipe size
- SLOTS: size and location as shown
- GRATING: supplied and installed by contractor
- NUMBER REQUIRED:
24" Pipe = 2 ea



DIMENSIONS

- A = 3'-10"
- B = 9'-7"
- C = 10'-1"
- D = 3'-7"
- 24" Pipe Opening = 28"

 <p>Zeiser Wilbert VAULT INC. CONCRETE PRODUCTS</p>	<p>750 Howard Street Elmira, NY 14904 Fax: (607) 737-0291 Phone: (607) 733-0568 1-800-472-4335</p>	<p>Title: Safety Headwall</p>
		<p>Drawn By: JPS Drawing No.: 08030900 Date: 8-3-09</p>
<p>Scale: Not To Scale</p>		