

SEPTIC TANK ST-6500

NOTES:

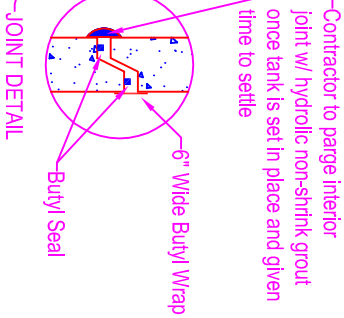
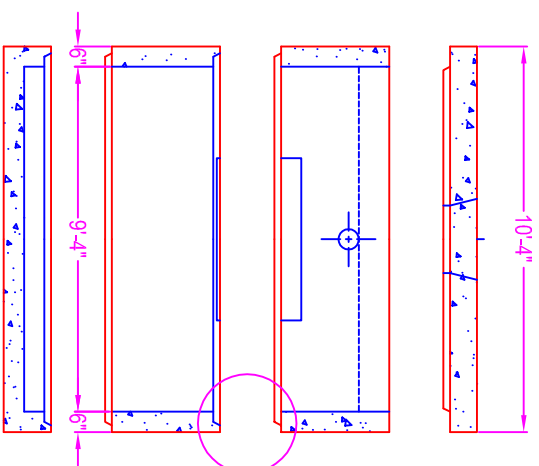
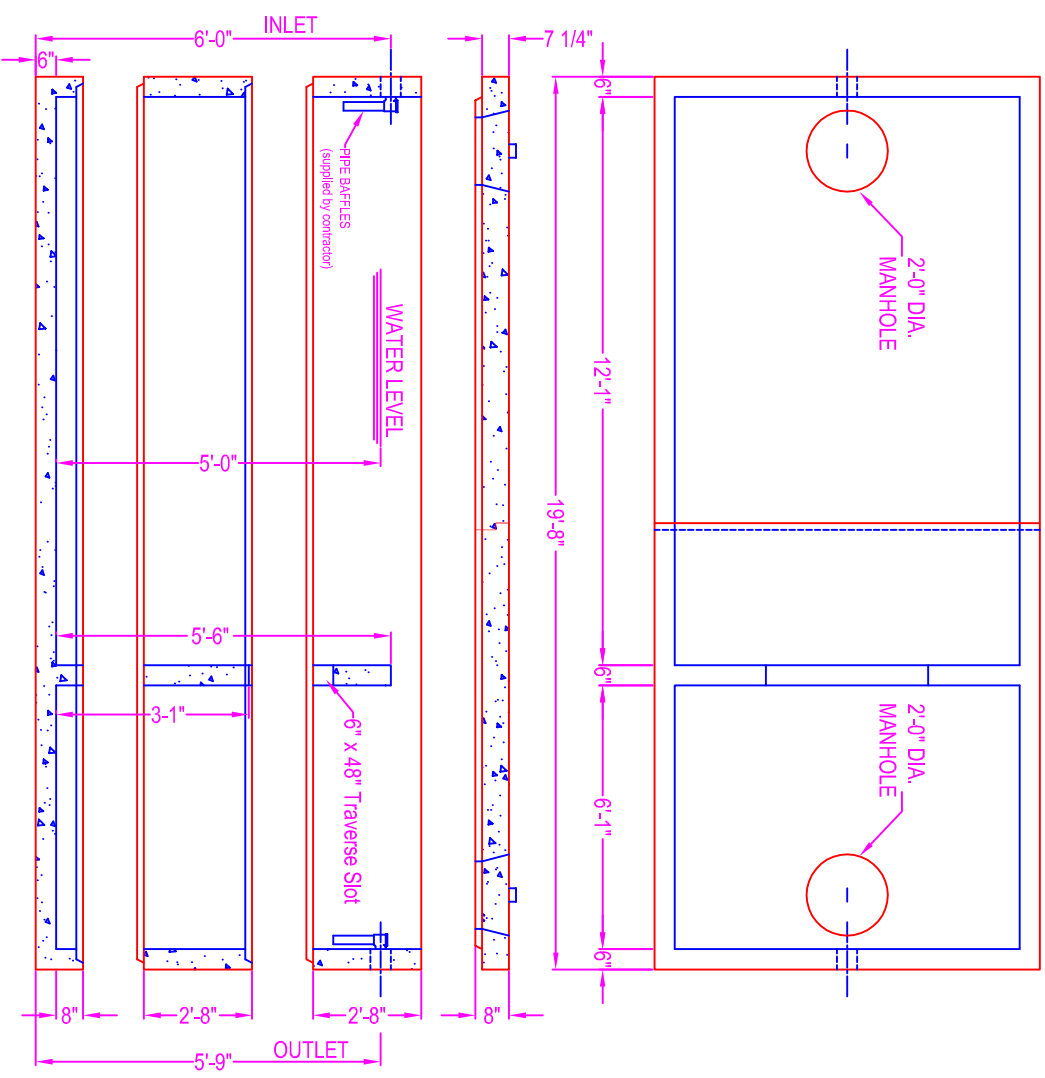
- CONCRETE: 5000 psi @ 28 days
- REF: rebar grade 60 ASTM A615
- ENTRAINED AIR: 5% to 8%
- DESIGN LOAD: AASHTO design
- LIVE LOAD: H20 traffic rating
- PIPE OPENINGS:

- pipe gasket seals
- 4" PVC - Kor-N-Seal boot
- 6" PVC - Kor-N-Seal boot
- 8" PVC - Kor-N-Seal boot
- grout filled opening
- 4" PVC - 6" corecut (grout filled in field)
- 6" PVC - 8" corecut (grout filled in field)
- 8" PVC - 12" corecut (grout filled in field)

The ultimate watertightness of the tank (grout filled pipe openings and section joint) is the responsibility of the installing contractor.

WEIGHTS:

- Base: 3,76 cy = 15,800 # (approx)
- Walls: 7,40 cy = 31,000 # (approx)
- Cover: 5,02 cy = 21,000 # (approx)



- Joint Sealant
- Butyl Seal - Con Seal CS-102 (1") supplied by ZWW
- Butyl Wrap - Con Seal CS-213 (6" wide) supplied by ZWW (optional)
- Hydraulic non-shrink grout supplied and applied by contractor

Zeiser
Wilbert
VAULT, INC.
CONCRETE PRODUCTS

750 Howard Street Elmira, NY 14904
Fax: (607) 737-0291
Phone: (607) 733-0568
1-800-472-4335

Title: ST-6500 H20 Traffic
Scale: Not To Scale

Drawn By: JPS
Drawing No.: 01050918
Date: 1-5-09