

# SEPTIC TANK ST-3500

**NOTES:**

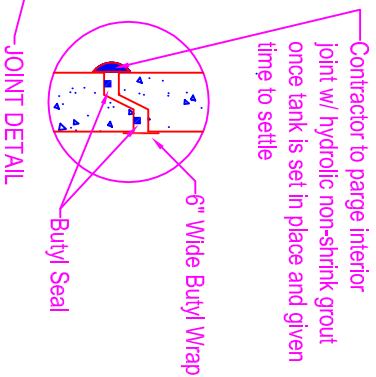
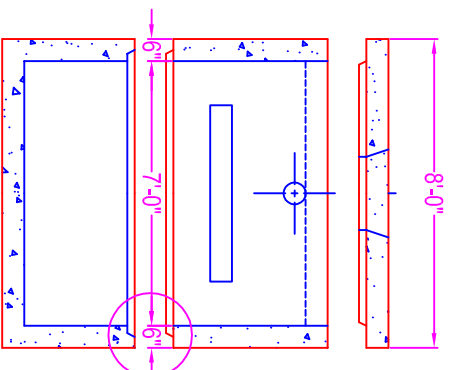
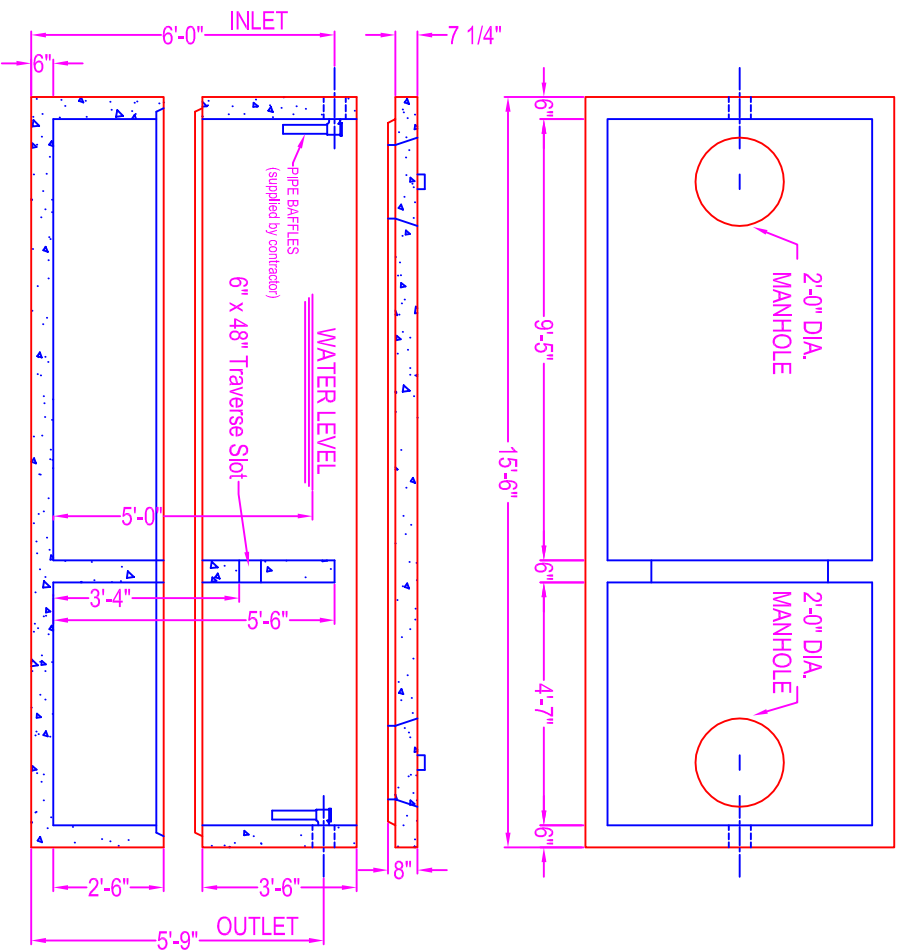
CONCRETE: 5000 psi @ 28 days  
 REF: rebar grade 60 ASTM A615  
 ENTRAINED AIR: 5% to 8%  
 DESIGN LOAD: AASHTO design  
 LIVE LOAD: H20 traffic rating

**PIPE OPENINGS:**

- pipe gasket seals
  - 4" PVC - Kor-N-Seal boot
  - 6" PVC - Kor-N-Seal boot
  - 8" PVC - Kor-N-Seal boot
  - grout filled opening
  - 4" PVC - 6" coreout (grout filled in field)
  - 6" PVC - 8" coreout (grout filled in field)
  - 8" PVC - 12" coreout (grout filled in field)
- The ultimate watertightness of the tank (grout filled pipe openings and section joint) is the responsibility of the installing contractor.

**WEIGHTS:**

Base: 2.30 cy = 9,700 # (approx)  
 Walls: 5.71 cy = 24,000 # (approx)  
 Cover: 3.06 cy = 12,900 # (approx)



**JOINT DETAIL**  
 Contractor to parge interior joint w/ hydraulic non-shrink grout once tank is set in place and given time to settle  
 6" Wide Butyl Wrap  
 Butyl Seal  
 Joint Sealant  
 Butyl Seal - Con Seal CS-102 (1") supplied by ZWV/  
 Butyl Wrap - Con Seal CS-213 (6" wide) supplied by ZWV (optional)  
 Hydraulic non-shrink grout supplied and applied by contractor



**Zeiser  
 Wilbert**  
 VAULT, INC.  
 750 Howard Street Elmira, NY 14904  
 Fax: (607) 737-0291  
 Phone: (607) 733-0568  
 1-800-472-4335

**Title: ST-3500 H20 Traffic**  
 Scale: Not To Scale

Drawn By: JPS  
 Drawing No.: 01050914  
 Date: 1-5-09