

# SEPTIC TANK ST-3000

**NOTES:**

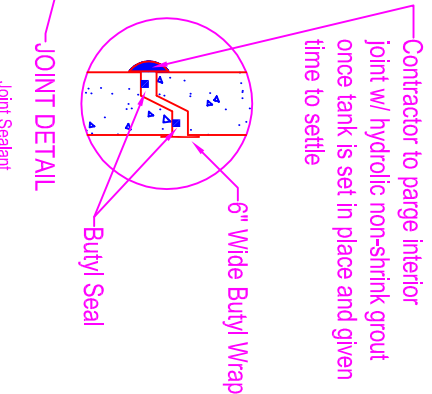
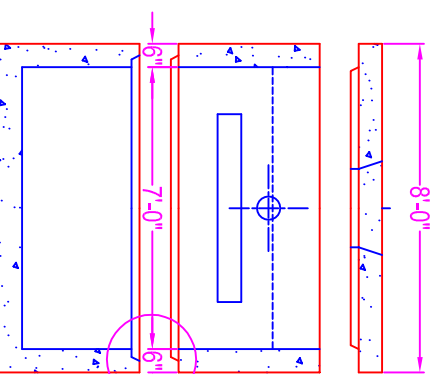
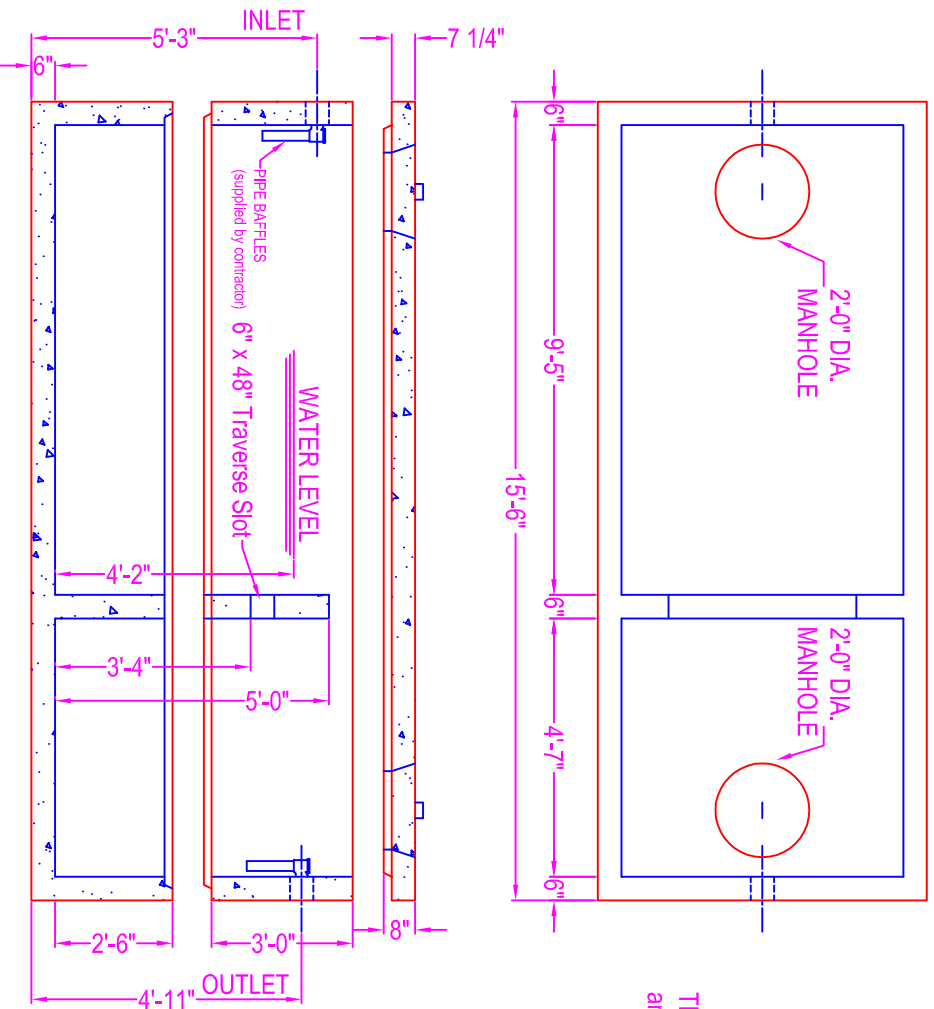
- CONCRETE: 5000 psi @ 28 days
- REF: rebar grade 60 ASTM A615
- ENTRAINED AIR: 5% to 8%
- DESIGN LOAD: AASHTO design
- LIVE LOAD: H20 traffic rating
- PIPE OPENINGS:

- pipe gasket seals
- 4" PVC - Kor-N-Seal boot
- 6" PVC - Kor-N-Seal boot
- 8" PVC - Kor-N-Seal boot
- grout filled opening
- 4" PVC - 6" corecut (grout filled in field)
- 6" PVC - 8" corecut (grout filled in field)
- 8" PVC - 12" corecut (grout filled in field)

The ultimate watertightness of the tank (grout filled pipe openings and section joint) is the responsibility of the installing contractor.

**WEIGHTS:**

- Base: 2.30 cy = 9,700 # (approx)
- Walls: 5.23 cy = 22,000 # (approx)
- Cover: 3.06 cy = 12,900 # (approx)



Contractor to purge interior joint w/ hydraulic non-shrink grout once tank is set in place and given time to settle

- Joint Sealant
- Butyl Seal - Con Seal CS-102 (1") supplied by ZWV
- Butyl Wrap - Con Seal CS-213 (6" wide) supplied by ZWV (optional)
- Hydraulic non-shrink grout supplied and applied by contractor



**Zeiser Wilbert**  
VAULT, INC.  
750 Howard Street Elmira, NY 14904  
Fax: (607) 737-0291  
Phone: (607) 733-0568  
1-800-472-4335

**Title: ST-3000 H20 Traffic**  
Scale: Not To Scale

Drawn By: JPS  
Drawing No.: 01050913  
Date: 1-5-09

CONCRETE PRODUCTS