

SEPTIC TANK ST - 2500

NOTES:

- CONCRETE: 5000 psi @ 28 days
- REF: rebar grade 60 ASTM A615
- ENTRAINED AIR: 5% to 8%
- DESIGN LOAD: AASHTO design
- LIVE LOAD: H20 traffic rating
- DESIGN FILL: 0 - 3' max fill height

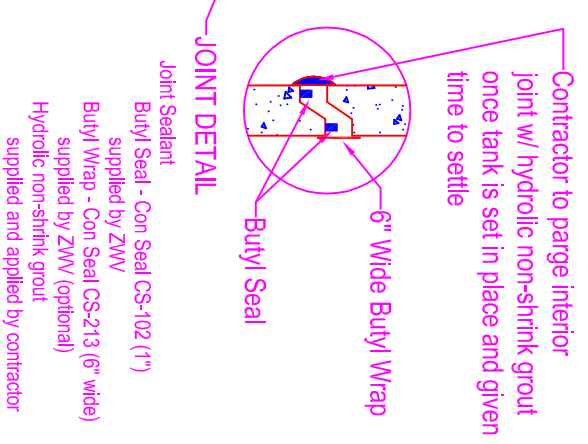
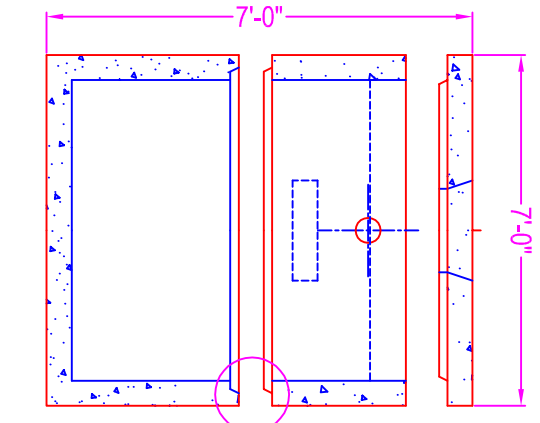
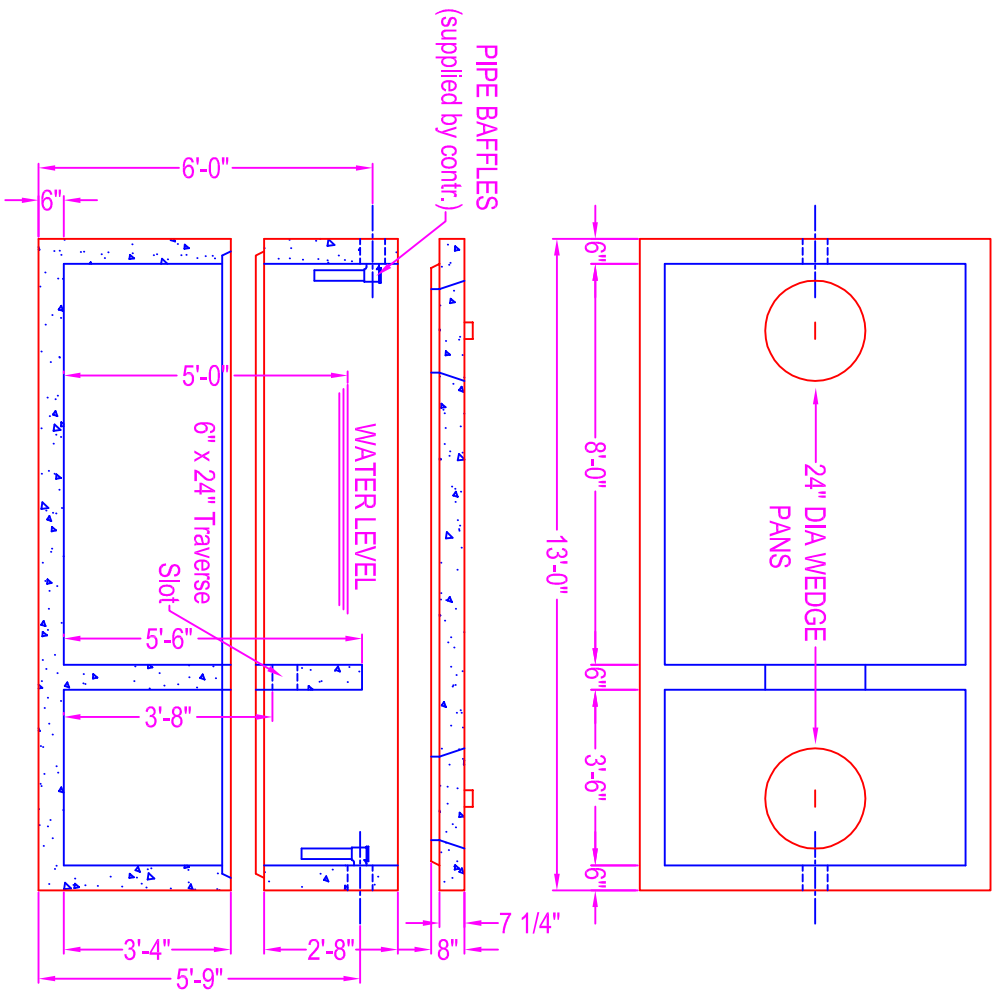
PIPE OPENINGS:

- pipe gasket seals
- 4" PVC - Ko-N-Seal boot
- 6" PVC - Ko-N-Seal boot
- 8" PVC - Ko-N-Seal boot
- grout fill openings
- 4" PVC - 6" coreout (grout filled in field)
- 6" PVC - 8" coreout (grout filled in field)
- 8" PVC - 12" coreout (grout filled in field)

The ultimate watertightness of the tank (for grout filled openings and section joints) is the responsibility of the installing contractor.

WEIGHTS:

- Base & Riser #1: 4.40 cy = 18,500 # (approx)
- Riser #2: 2.12 cy = 8,900 # (approx)
- Cover Slab = 2.25 cy = 9,500 # (approx)



JOINT DETAIL
 Joint Sealant
 Butyl Seal - Con Seal CS-102 (1")
 supplied by ZWV
 Butyl Wrap - Con Seal CS-213 (6" wide)
 supplied by ZWV (optional)
 Hydraulic non-shrink grout
 supplied and applied by contractor

Zeiser
Wilbert
 VAULT, INC.
 CONCRETE PRODUCTS

750 Howard Street Elmira, NY 14904
 Fax: (607) 737-0291
 Phone: (607) 733-0568
 1-800-472-4335

Title: ST-2500 H20 Traffic
Scale: Not To Scale

Drawn By: JPS
 Drawing No.: 01020912
 Date: 1-2-09