

SEPTIC TANK ST-1250 HS-20

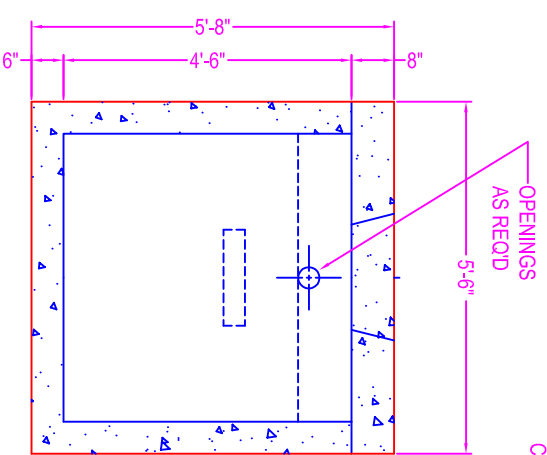
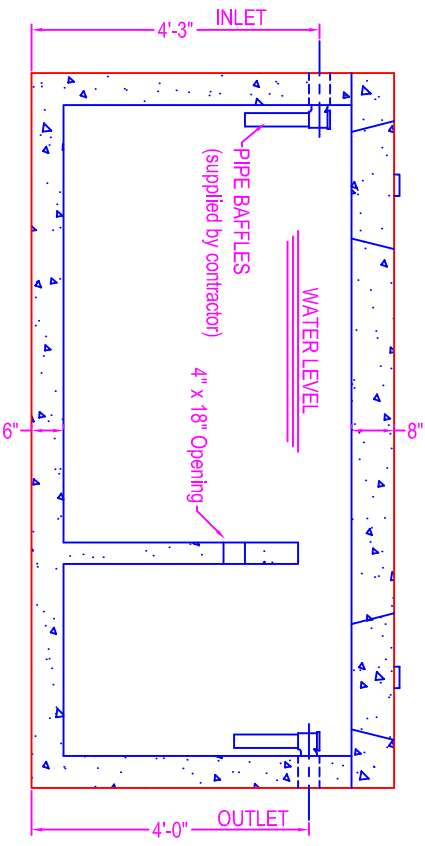
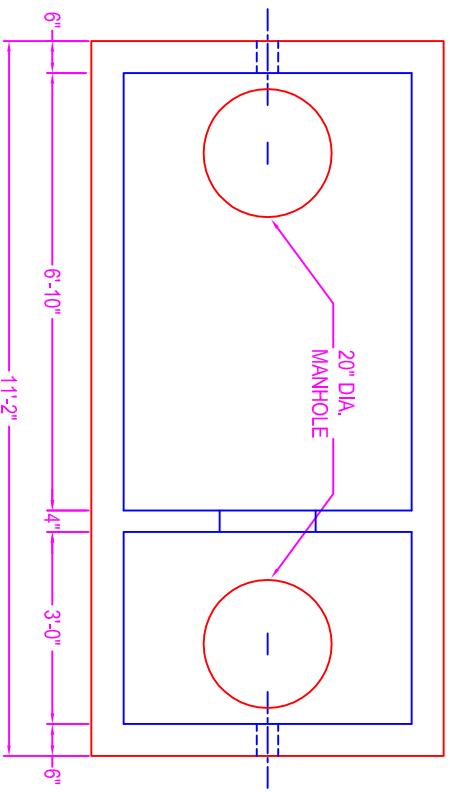
1-INLET
1-OUTLET

NOTES:

- CONCRETE: 5000 psi @ 28 days
- REF: rebar grade 60 ASTM A615
- ENTRAINED AIR: 5% to 8%
- DESIGN LOAD: AASHTO design
- LIVE LOAD: H20 traffic rating
- DESIGN FILL: 24" max fill
- PIPE OPENINGS:
- pipe gasket seals
- 4" PVC - Kor-N-Seal boot
- 6" PVC - Kor-N-Seal boot
- 8" PVC - Kor-N-Seal boot
- grout fill openings
- 4" PVC - 6" coreout (grout filled in field)
- 6" PVC - 8" coreout (grout filled in field)
- 8" PVC - 12" coreout (grout filled in field)

The ultimate watertightness of the tank (for grout filled openings) is the responsibility of the installing contractor.

Tank Weight: 3.97 cy = 16,700 # (approx)
Cover Weight: 1.52 cy = 6,400 # (approx)



Zeiser
Wilbert
VAULT, INC.
CONCRETE PRODUCTS

750 Howard Street Elmira, NY 14904
Fax: (607) 737-0291
Phone: (607) 733-0568
1-800-472-4335

Title: ST-1250 H20 Traffic

Scale: Not To Scale

Drawn By: JPS
Drawing No.: 01020907
Date: 1-2-09