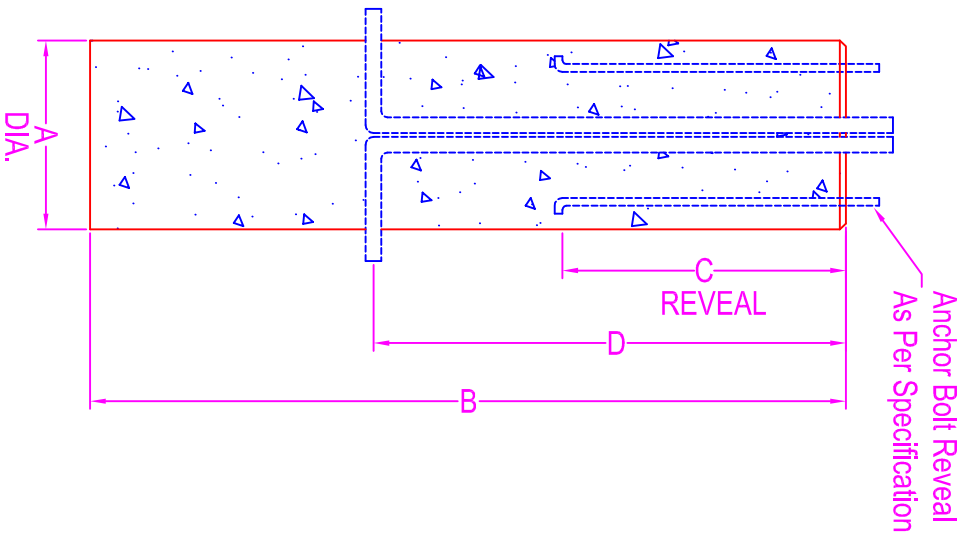
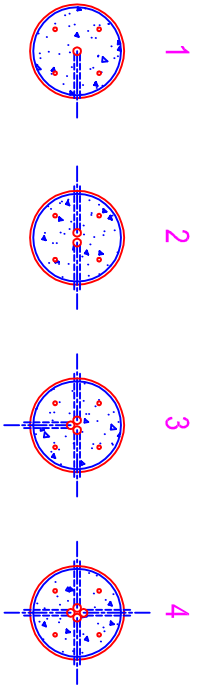


Typical Conduit Directions (or as per specs):



# LIGHT POLE BASE

**NOTES:**

- CONCRETE: 5000 psi @ 28 days
- REF: area of circ steel .19 sq in / 1in ft
- 4 ea - #5 rebar in vertical direction
- Chamfer top edge
- All Dimensions to be Provided by Contractor
- As Well as Conduit, Template, and Anchor Bolts
- Light Pole Can Be Manufactured To Specific Design

**DIMENSIONS:**

- Anchor Bolt Reveal =
- A =
- B =
- C =
- D =

		750 Howard Street Elmira, NY 14904 Fax: (607) 737-0291 Phone: (607) 733-0568 1-800-472-4335
CONCRETE PRODUCTS		

<b>Title: Round Light Pole Base</b>	
Scale: Not To Scale	

Drawn By: JPS	
Drawing No.: 1068	
Date: 3-14-00	