

ELECTRIC MANHOLE

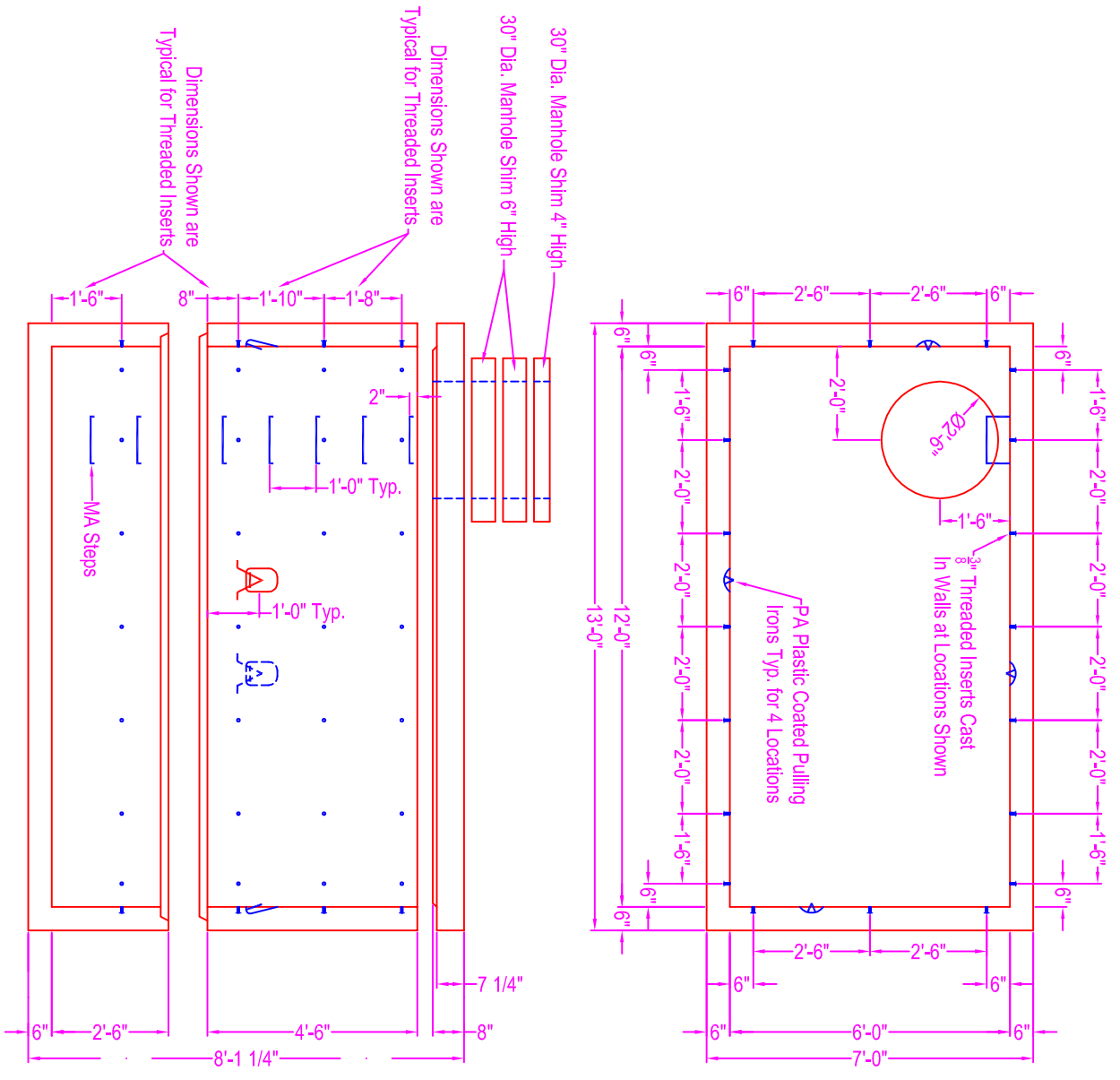
NOTES:

- CONCRETE: 5000 psi @ 28 days
- REF: Cover - #6 rebar @ 6" o.c. in short direction
- #5 rebar @ 11" o.c. in long direction
- 4 ea #6 rebar diamond around opening (1-1/2" conc cover from bottom up)
- Riser #1 - #5 rebar @ 6" o.c. in horiz. direction
- #4 rebar @ 8" o.c. in vert. direction (2 1/2" conc cover from inner core)
- Base Riser - #4 rebar @ 6" o.c. horiz. direction
- #5 rebar @ 6" o.c. vert. direction (2" conc cover from inner core)
- Base - #5 rebar @ 6" o.c. in short direction
- #4 rebar @ 6" o.c. in long direction
- #5 rebar bent "L's" 18" x 2-6" tails from base (2" conc cover from top down)
- INSERTS: 3/8" x 16 threaded inserts cast in walls at locations shown
- STEPS: MA Industries polypropylene steps
- SEAL: Con Seal CS-102 butyl seal @ joints
- CASTING: Neenah #R-1557 A bolted lid w/ gasket seal
- LIFTING: PA pulling irons cast in base and riser sect. at locations shown

WEIGHTS:

- Base & Jack Wall: 15,200 #
- Riser #1: 14,000 #
- Cover: 10,000 #

Note: Contractor shall be responsible for the ultimate watertightness of tank.



Zeiser
Wilbert
 VAULT, INC.
 CONCRETE PRODUCTS

750 Howard Street Elmira, NY 14904
 Fax: (607) 737-0291
 Phone: (607) 733-0568
 1-800-472-4335

Title: Electrical Manhole

Scale: Not To Scale

Drawn By: JPS
 Drawing No.: 03260600
 Date: 3-26-06