

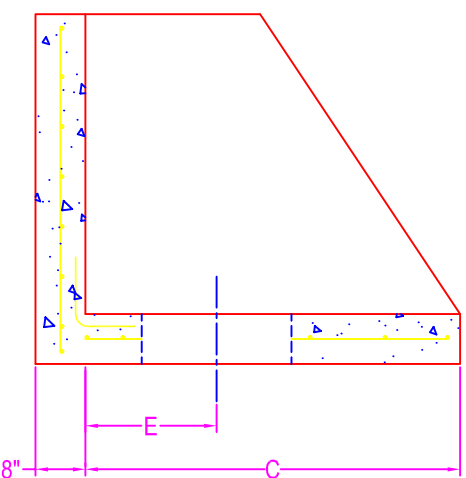
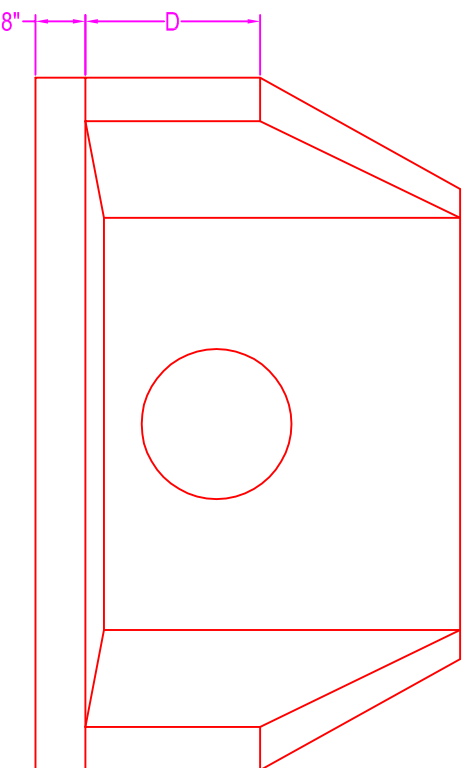
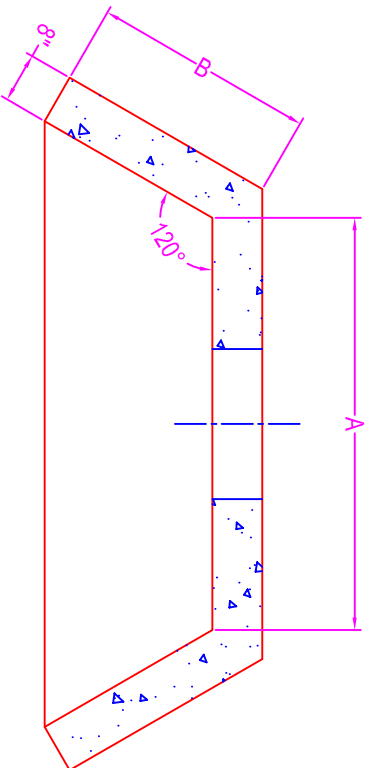
WINGWALL w/ APRON

NOTES:

- CONCRETE: 5000 psi @ 28 days
- REF: #4 rebar @ 8" o.c. each way
- in base
- #5 rebar tails from base to wall
- #4 rebar @ 12" o.c. each way
- in walls
- OPENING: corecut; pipe o.d. plus 4"

Dimensions:

- A =
- B =
- C =
- D =
- E =
- Opening =



Zeiser

Wilbert
VAULT, INC.

CONCRETE PRODUCTS

750 Howard Street Elmira, NY 14904

Fax: (607) 737-0291

Phone: (607) 733-0568

1-800-472-4335

Title: Wingwall w/ Apron

Drawn By: JPS

Drawing No.: 05040100

Scale: Not To Scale

Date: 5-4-01