

WINGWALL W/ APRON (2ea)

NOTES:

CONCRETE: 5000 psi @ 28 days
 REF: #4 rebar @ 8" o.c. each way

in base

#5 rebar tails from base to wall

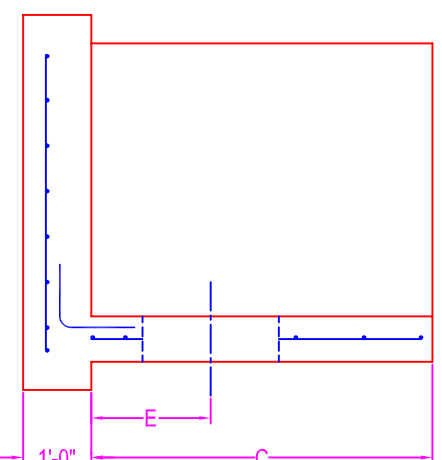
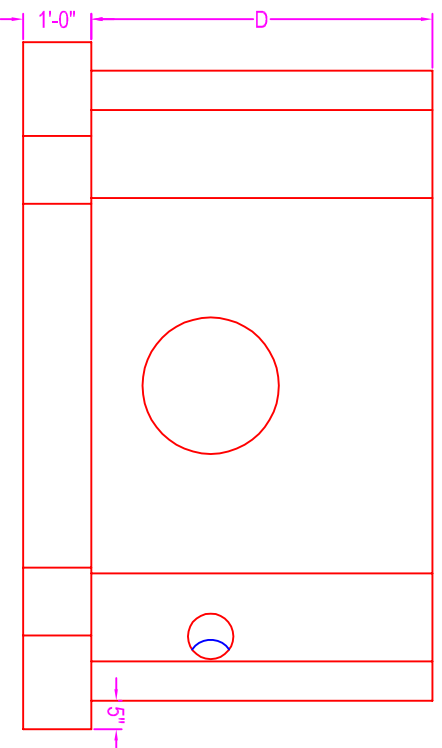
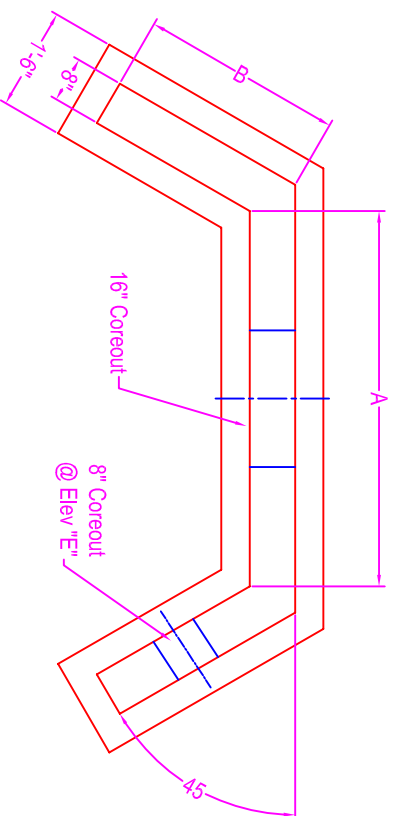
#4 rebar @ 12" o.c. each way

in walls

OPENING: corecut; pipe o.d. plus 4"

Dimensions:

- A = 4'-0"
 - B = 2'-0"
 - C = 5'-0"
 - D = 5'-0"
 - E = 3'-0"
- Opening = 16" and 8"



Zeiser

Wilbert
 VAULT INC.

CONCRETE PRODUCTS

750 Howard Street Elmira, NY 14904

Fax: (607) 737-0291

Phone: (607) 733-0568

1-800-472-4335

Title: Headwall w/ Apron

Drawn By: JPS

Drawing No.: 11160400

Scale: Not To Scale

Date: 11-17-04