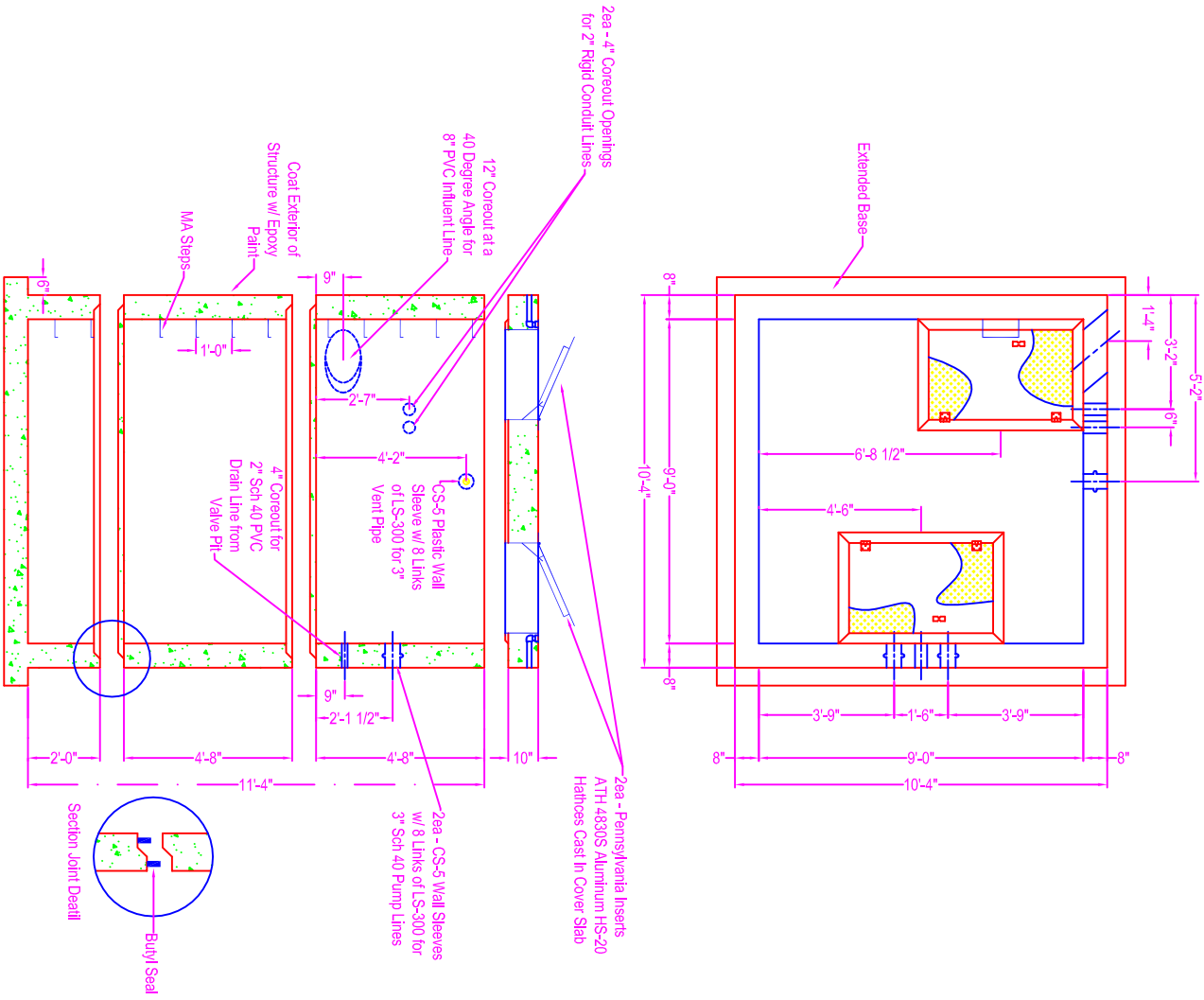


# 9' x 9' PUMP STATION

**NOTES:**

- CONCRETE: 5000 psi @ 28 days
- REF: Base Slab - #5 rebar @ 8" o.c. in both directions
- (2" conc cover from top down)
- (2" conc cover from inner core)
- #5 rebar bent "L" from base to walls (18" x 18" tails)
- Base Riser Section - #4 rebar @ 8" o.c. in both directions
- (2" conc cover from inner core)
- Riser #1 - #5 rebar @ 8" o.c. in both directions
- (2" conc cover from inner core)
- Riser #2 - #4 rebar @ 8" o.c. in both directions
- (2" conc cover from inner core)
- Cover Slab - #3 rebar @ 6" o.c. in both directions
- 2ea - additional #6 rebar @ 2" o.c. around each side of both hatches (1-1/2" conc cover from n/bottom up)
- OPENINGS: plastic wall sleeves and LS-300 link seal in locations shown on drawing
- coreout pipe openings at the locations were link seal cannot be used
- SEAL: MA Industries butyl seal @ joints
- HATCHES: Pennsylvania Inserts ATH 4830S aluminum HS-20 drainable frame style hatch cast in cover slab
- PAINT: coat exterior of structure w/ epoxy paint

- Weight:**
- Base & Base Riser Section: 22,176#
  - Riser #1: 18,816#
  - Riser #2: 18,816#
  - Cover: 13,818#



**Zeiser**  
**Wilbert**  
 VAULT, INC.  
 CONCRETE PRODUCTS

750 Howard Street Elmira, NY 14904  
 Fax: (607) 737-0291  
 Phone: (607) 733-0568  
 1-800-472-4335

**Title: 9' x 9' Pump Station**  
**Scale: Not To Scale**

Drawn By: JPS  
 Drawing No.: 01190700  
 Date: 1-19-07