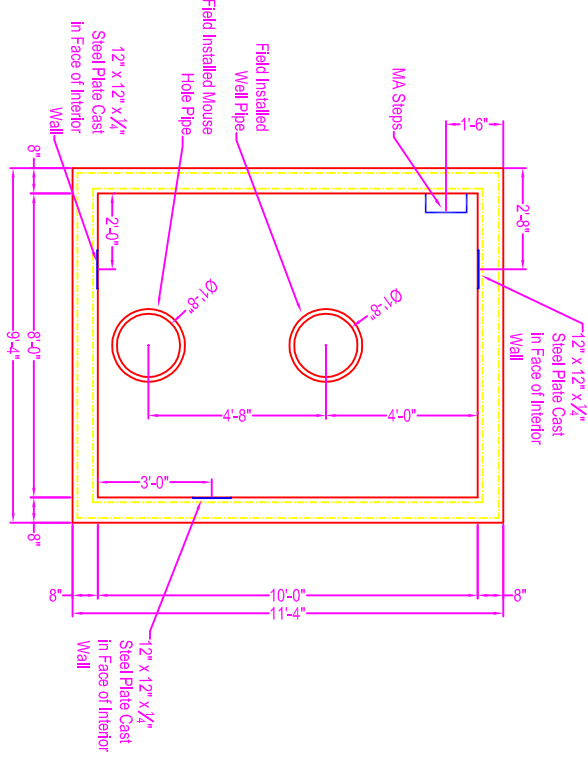


# GAS WELL CELLAR

**NOTES:**

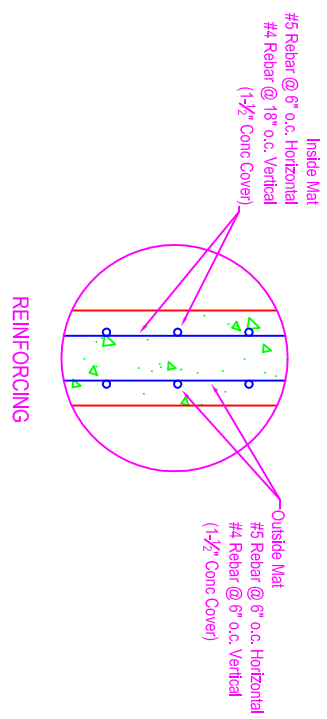
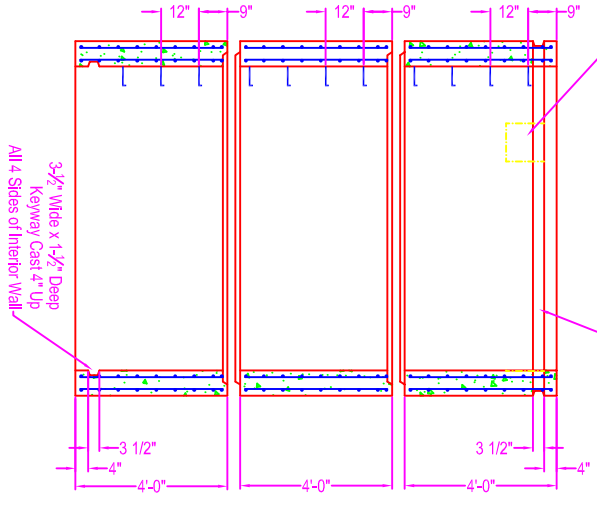
- CONCRETE: 5000 psi @ 28 days
- REF: Grade 60 Black Bar as Shown Below
- STEPS: MA Industries - polypropylene steps in walls
- PLATES: 1/4" steel plates on interior face of top section walls in 3 locations
- KEYWAY: as shown on detail

WEIGHT:  
15,300 # per section

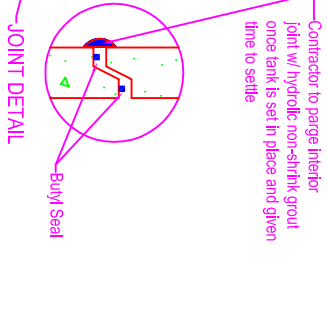


12" x 12" x 1/2" Steel Plate 4" Down From Top of Wall to Top of Plate (Typical 3 Locations)

3-1/2" Wide x 1-1/2" Deep Keyway Cast 4" Down All 4 Sides of Exterior Wall



**REINFORCING**



**Zeiser Wilbert**  
VAULT INC.  
CONCRETE PRODUCTS

750 Howard Street Elmira, NY 14904  
 Fax: (607) 737-0291  
 Phone: (607) 733-0568  
 1-800-472-4335

**Title: Gas Well Cellar**  
 Scale: Not To Scale

Drawn By: JPS  
 Drawing No.: 11301700  
 Date: 11-30-17