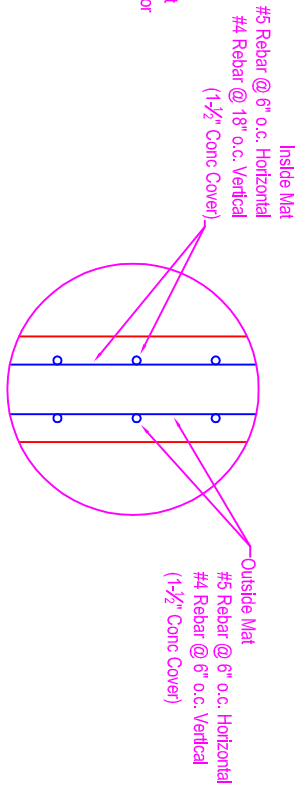
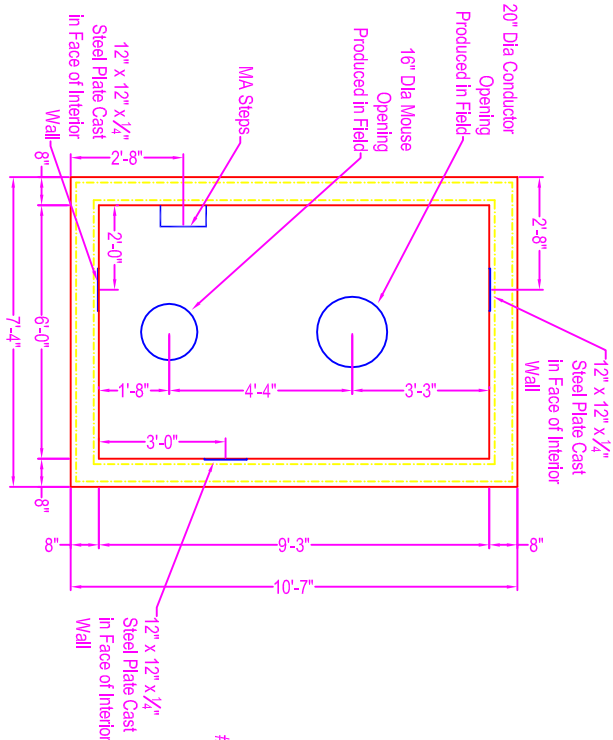


GAS WELL CELLAR

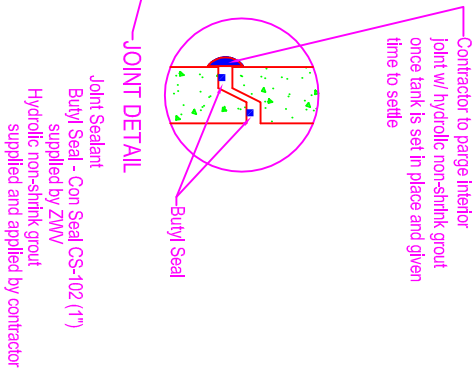
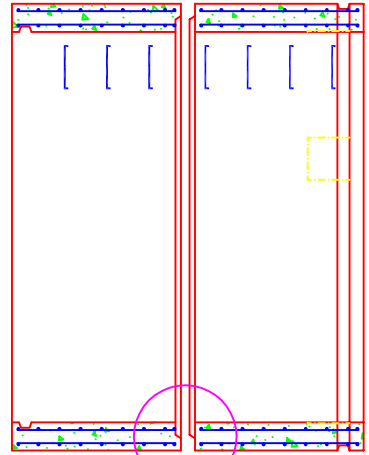
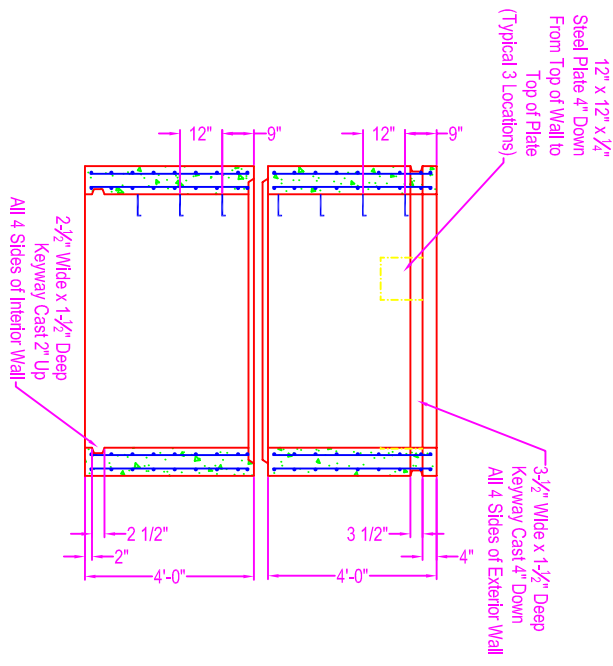
NOTES:

- CONCRETE: 5000 psi @ 28 days
- REF: Grade 60 Black Bar as Shown Below
- STEPS: MA Industries - polypropylene steps in walls
- PLATES: 1/4" steel plates on interior face of top section walls in 3 locations
- KEYWAY: as shown on detail

WEIGHT:
13,200 # per section



REINFORCING



Zeiser
CONCRETE PRODUCTS

Wilbert
VAULT INC.

750 Howard Street Elmira, NY 14904
 Fax: (607) 737-0291
 Phone: (607) 733-0568
 1-800-472-4335

Title: Gas Well Cellar

Scale: Not To Scale

Drawn By: JPS

Drawing No.: 04191800

Date: 4-19-18