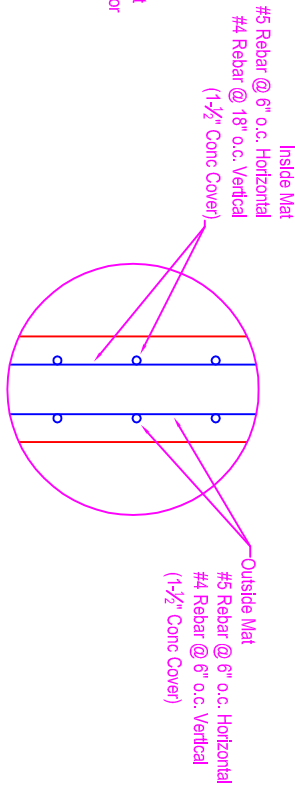
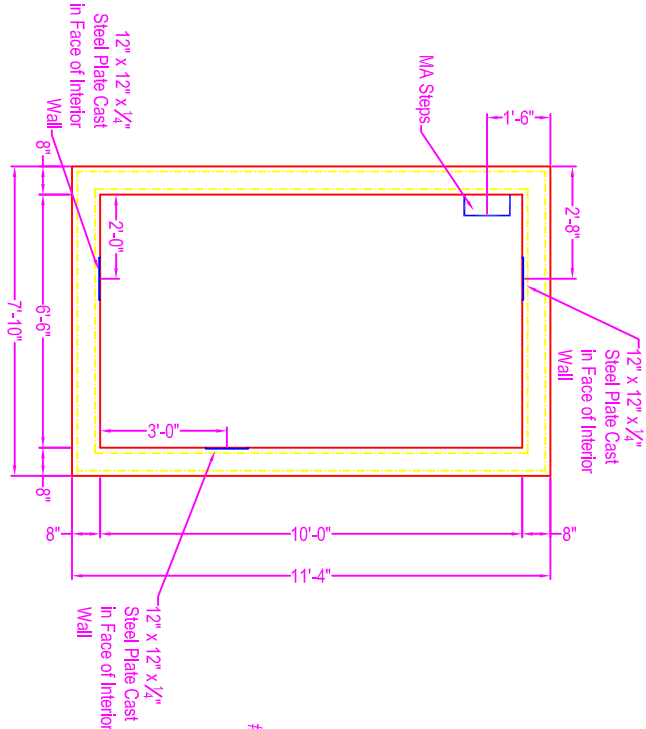


GAS WELL CELLAR

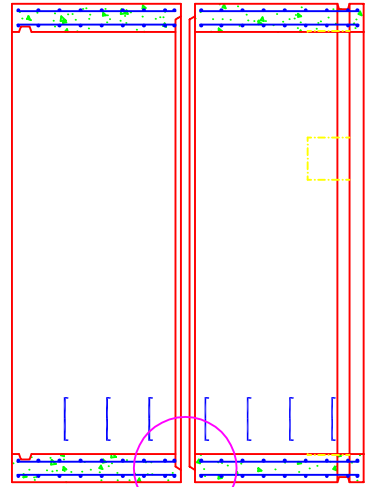
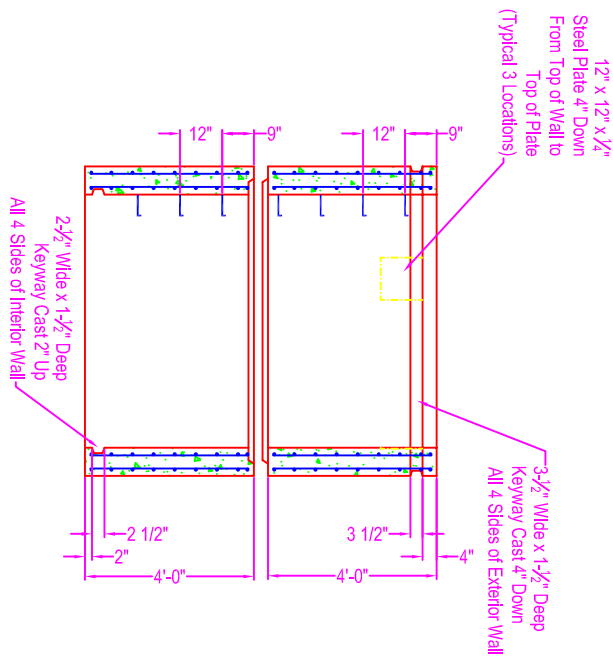
NOTES:

- CONCRETE: 5000 psi @ 28 days
- REF: Grade 60 Black Bar as Shown Below
- STEPS: MA Industries - polypropylene steps in walls
- PLATES: 1/4" steel plates on interior face of top section walls in 3 locations
- KEYWAY: as shown on detail

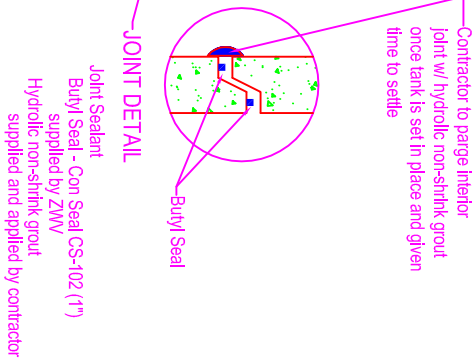
WEIGHT:
14,800 # per section



REINFORCING



JOINT DETAIL



Contractor to purge interior joint w/ hydraulic non-sink grout once tank is set in place and given time to settle

Zeiser

Wilbert
VAULT INC.

CONCRETE PRODUCTS

750 Howard Street Elmirra, NY 14904

Fax: (607) 737-0291

Phone: (607) 733-0568

1-800-472-4335

Title: Gas Well Cellar

Scale: Not To Scale

Drawn By: JPS

Drawing No.: 02091800

Date: 2-9-18