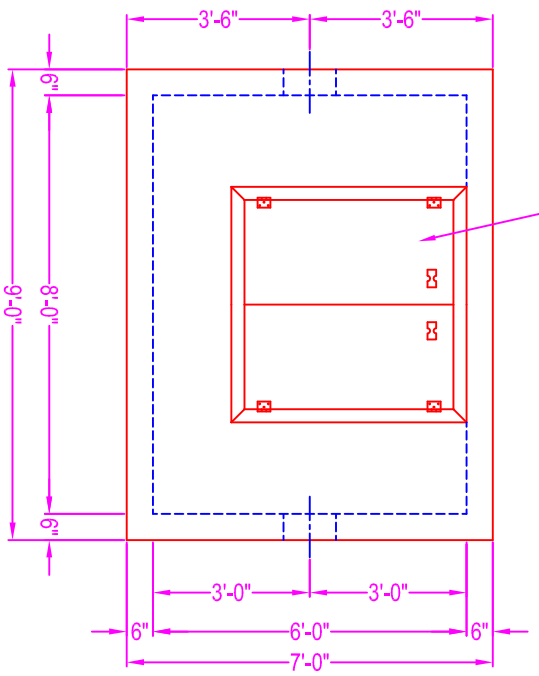


Penn Inserts ATS 4848D
Aluminum Hatch Cast In
Cover Slab (Pedestrian Load)



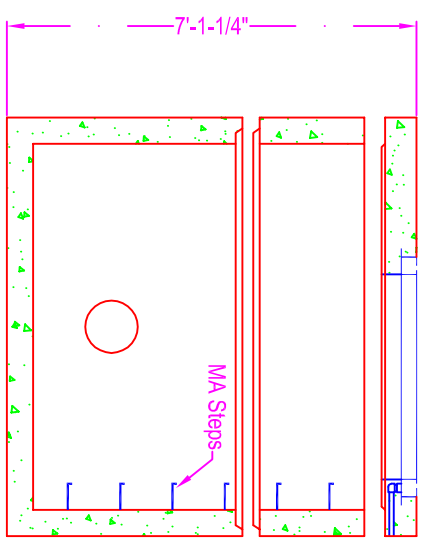
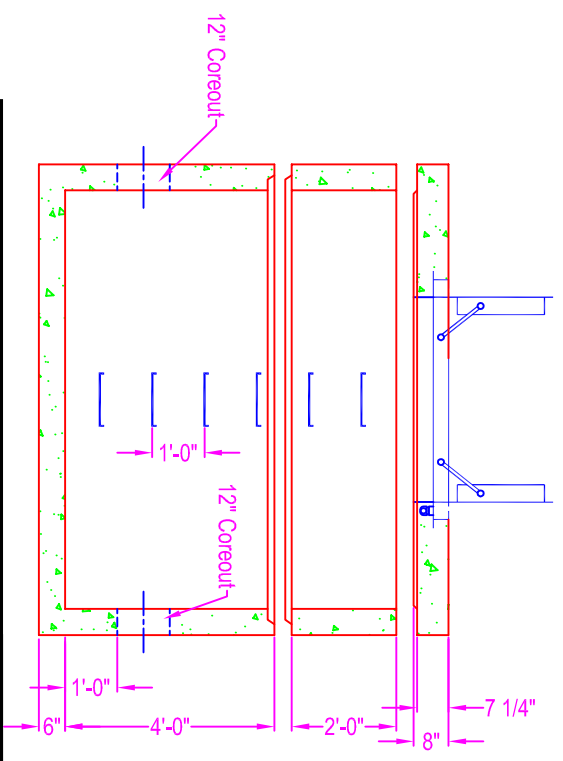
METER VAULT

NOTES:

- CONCRETE: 5000 psi @ 28 days
- REF: Cover Slab - #5 rebar @ 8" o.c. in short direction
- #5 rebar @ 10" o.c. in long direction
- (1-1/2" conc cover from bottom up)
- Walls - #4 rebar @ 6" o.c. in vertical direction
- #4 rebar @ 6" o.c. in horizontal direction
- (2" conc cover from inner core)
- Base Slab - #4 rebar @ 6" o.c. in short direction (top)
- #4 rebar @ 6" o.c. in long direction (bottom)
- (2" conc cover from top down)
- Additional Rebar - #5 rebar bent "L" shape from base to walls @ 12" o.c. (15" x 15" tails)
- Provide additional rebar around all openings equal to the bars interrupted half each side in same plane
- OPENINGS: coreout as shown
- HATCH: Penn Inserts ATS 4848D aluminum hatch 300 psf pedestrian load rating
- STEPS: MA Industries - polypropylene steps
- JOINT SEALANT: Con Seal CS-102 butyl seal
- Water Stop at base to wall joint
- LIFTING: sink it handles cast in walls and cover slab

WEIGHT:

- Base & Walls = 14,200 #
- Riser Section = 4,700 #
- Cover Slab = 6,500 #



Zeiser
Wilbert
VAULT, INC.
CONCRETE PRODUCTS

750 Howard Street Elmira, NY 14904
Fax: (607) 737-0291
Phone: (607) 733-0568
1-800-472-4335

Title: Meter Vault

Drawn By: JPS
Drawing No.: 01021400
Date: 1-2-14

Scale: Not To Scale