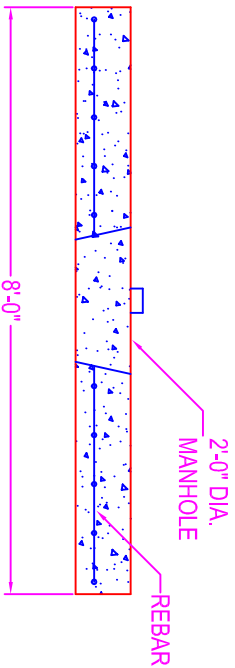


H-20
HEAVY DUTY
COVER

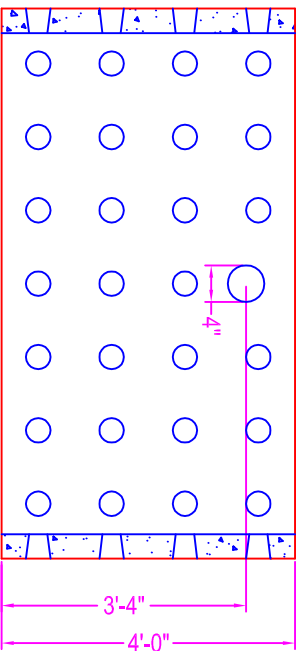


DRYWELL 7'-6" DIA.

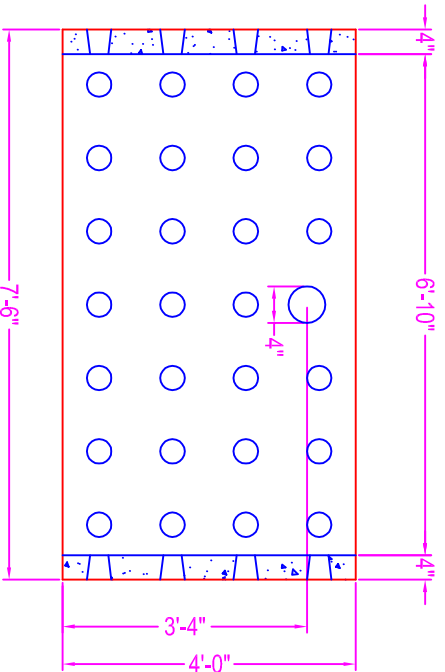
NOTES:

- CONCRETE: 5000 psi @ 28 days
- REF.: 4 x 4 #12.5 ga. wiremesh in barrel
- #7 rebar @ 8" o.c. each way in H-20 cover
- #4 rebar @ 8" o.c. each way in heavy duty cover
- #3 rebar @ 12" o.c. each way in standard cover (non traffic bearing)
- #4 rebar 6" o.c. each way in donut base

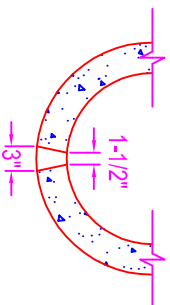
4'-0"
BARREL



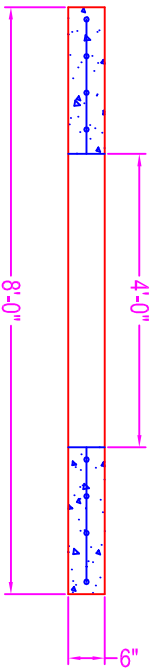
4'-0"
BARREL



**DRAIN HOLE
DETAIL**



BASE



Zeiser
Wilbert
VAULT, INC.
CONCRETE PRODUCTS

750 Howard Street Elmira, NY 14904
Fax: (607) 737-0291
Phone: (607) 733-0568
1-800-472-4335

Title: DRYWELL 7'-6" DIA.

Scale: Not To Scale

Drawn By: JPS
Drawing No.: 1038
Date: 12-16-99