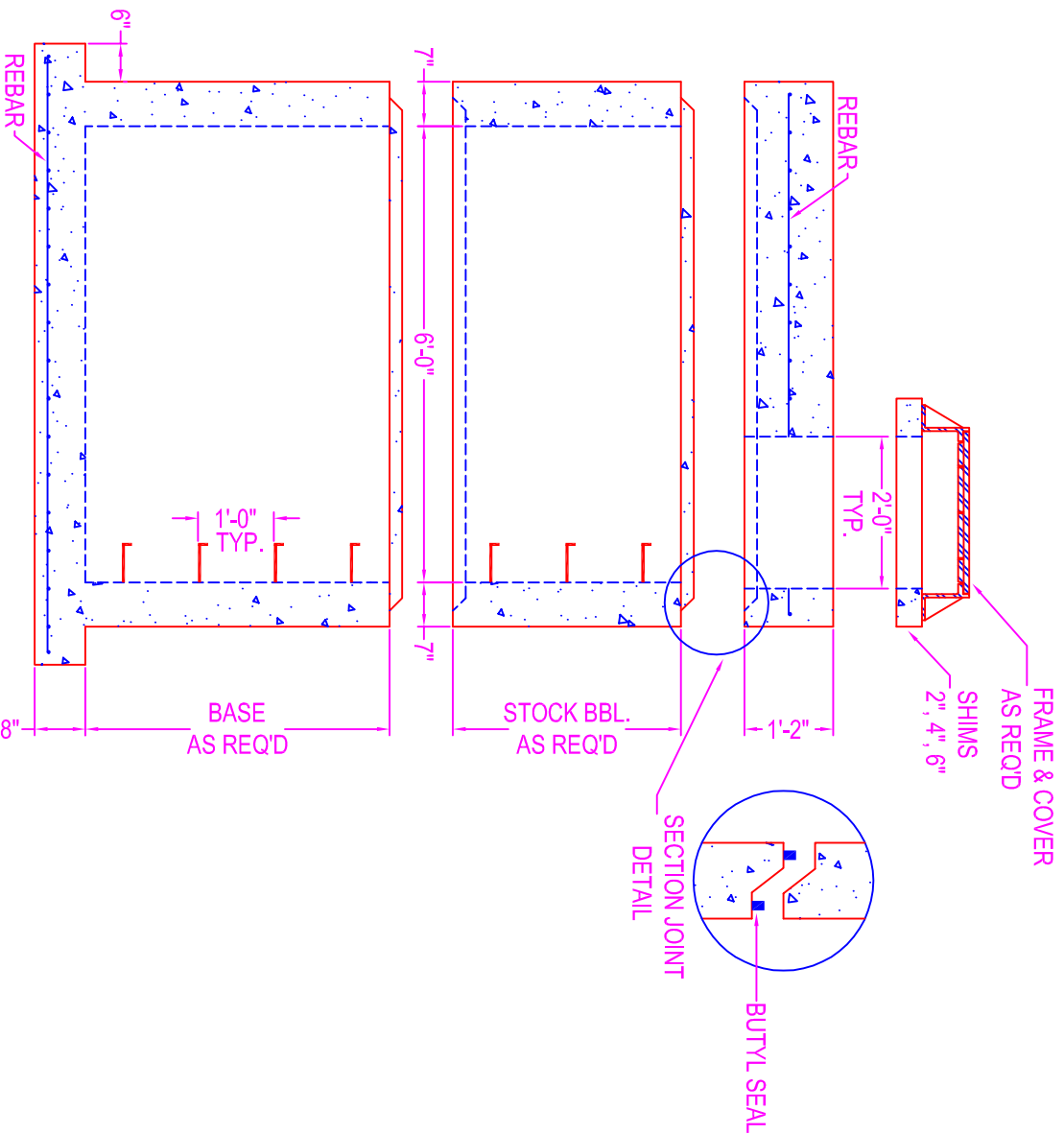


MANHOLE 6'-0" DIA.



NOTES:

CONCRETE: 5000 psi @ 28 days

DESIGN SPECS: conform to latest ASTM C-478

REF.: area of circ. steel .18 sq. in. / lin. ft.

STEPS: steel reinforced copolymer polypropylene plastic step conforms to latest ASTM

C-478

DESIGN LOAD: HS-20

OPENINGS: size & location to conform to dwgs.

TYPES:

- Coreout - pipe o.d. plus 4"
- Kor-N-Seal - details on spec. sheet
- Star Seal - details on spec. sheet

COATING: if req'd

TYPES:

- GS-55
- Epoxy
- In
- Out
- None

BUTYL SEALANT: @ each joint; see spec. sheet

STOCK BARREL HEIGHTS

| | | |
|-------|-------|-------|
| 1'-6" | 2'-0" | 4'-0" |
| 3'-0" | 5'-0" | |



750 Howard Street Elmira, NY 14904
 Fax: (607) 737-0291
 Phone: (607) 733-0568
 1-800-472-4335

Title: 6' Dia. Manhole

Drawn By: JPS
 Drawing No.: 07010500
 Date: 7-1-05

Scale: Not To Scale