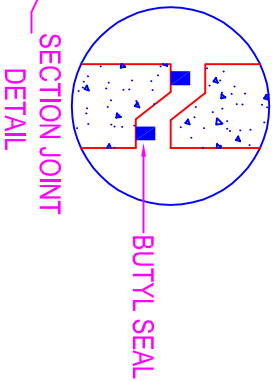
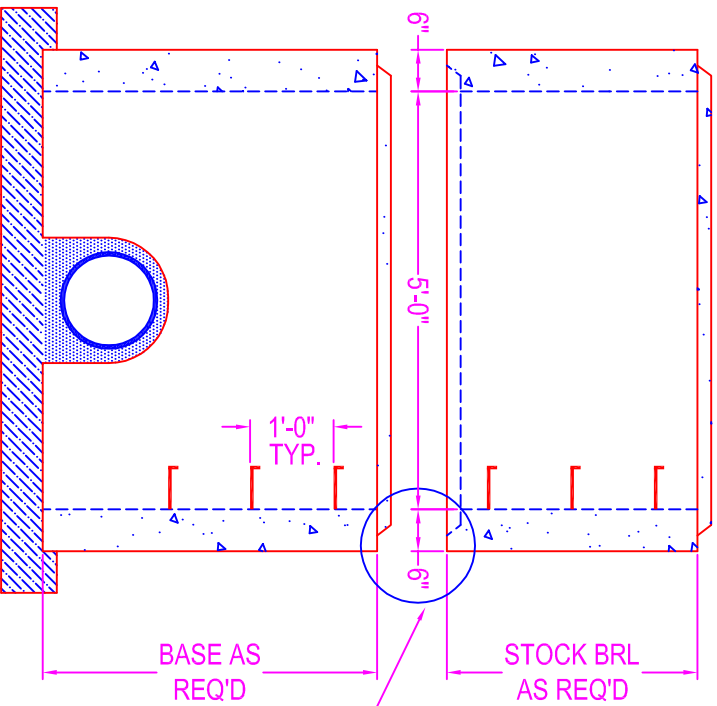
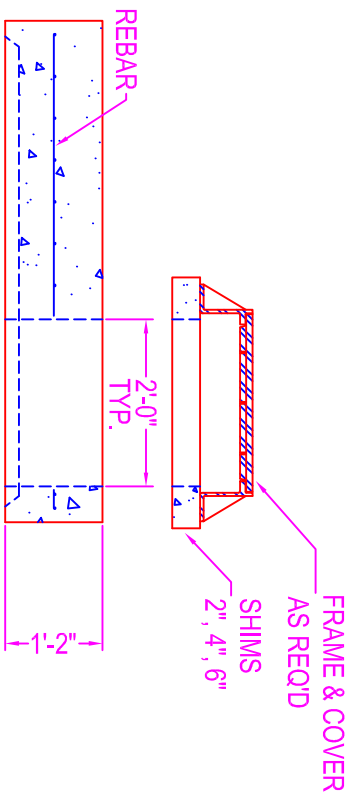


DOGHOUSE MANHOLE 5'-0" DIA.



NOTES:

- CONCRETE: 5000 psi @ 28 days
- DESIGN SPECS: conform to latest ASTM C-478
- REF.: area of circ. steel . 17 sq. in. / lin. ft.
- STEPS: steel reinforced copolymer polypropylene plastic step conforms to latest ASTM C-478

DESIGN LOAD: HS-20

OPENINGS: size & location to conform to dwgs.

TYPES:

- Corecut - pipe o.d. plus 4"
- Kor-N-Seal - details on spec. sheet
- Star Seal - details on spec. sheet

COATING: if req'd

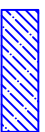
TYPES:

- CS-55
- Epoxy
- In
- Out
- None

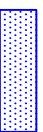
BUTYL SEALANT: @ each joint; see spec. sheet

STOCK BARREL HEIGHTS

- 1'-0" 2'-0" 4'-0"
- 1'-6" 3'-0"



Indicates Contractor to Field Pour Base Slab



Indicates Contractor to Field Pour Grout Around Pipe

Zeiser
Wilbert
VAULT, INC.
CONCRETE PRODUCTS

750 Howard Street Elmira, NY 14904
Fax: (607) 737-0291
Phone: (607) 733-0568
1-800-472-4335

Title: 5' Dia. Doghouse MH
Scale: Not To Scale

Drawn By: JPS
Drawing No.: 04030601
Date: 4-3-06