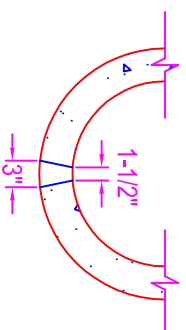
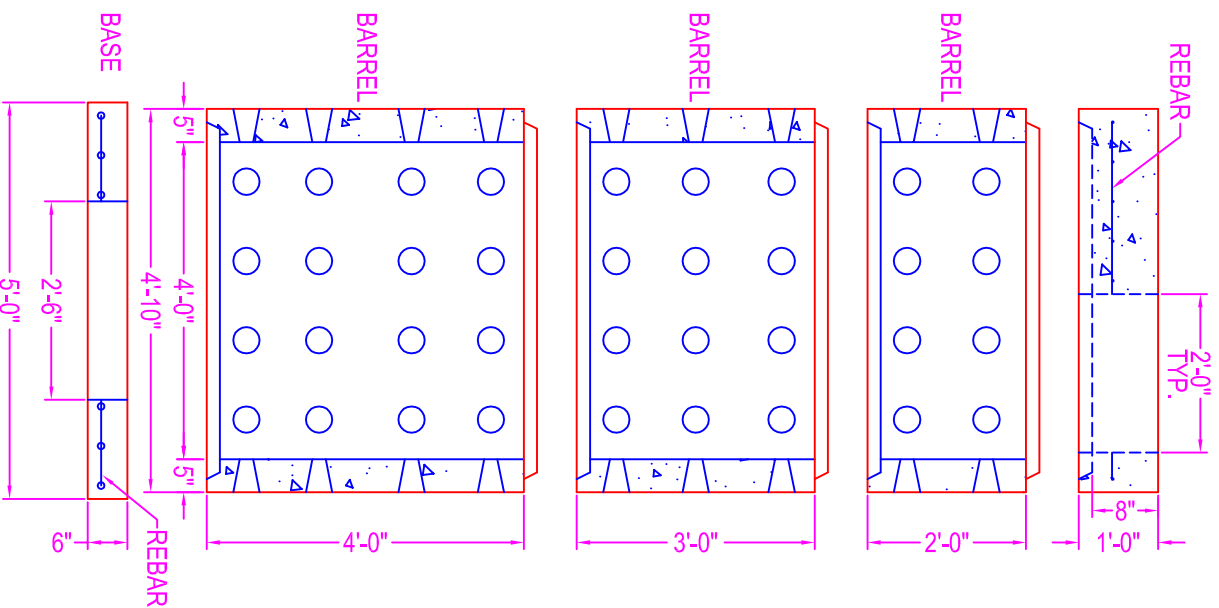


DRYWELL 4'-0" DIA.

NOTES:

- CONCRETE: 5000 psi @ 28 days
- POLYPROPYLENE FIBERS
- COVER: HS20 load rating
- BASE: #3 rebar @ 12" o.c.
- DRAIN HOLES: 12" o.c.



DRAIN HOLE
DETAIL

Zeiser

Wilbert
VAULT, INC.

CONCRETE PRODUCTS

750 Howard Street Elmira, NY 14904

Fax: (607) 737-0291

Phone: (607) 733-0568

1-800-472-4335

Title: 4' Dia. Drywell

Scale: Not To Scale

Drawn By: JPS

Drawing No.: 1036

Date: 12-13-99