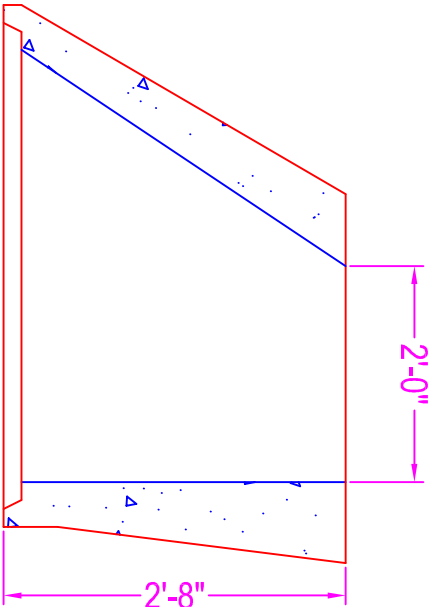


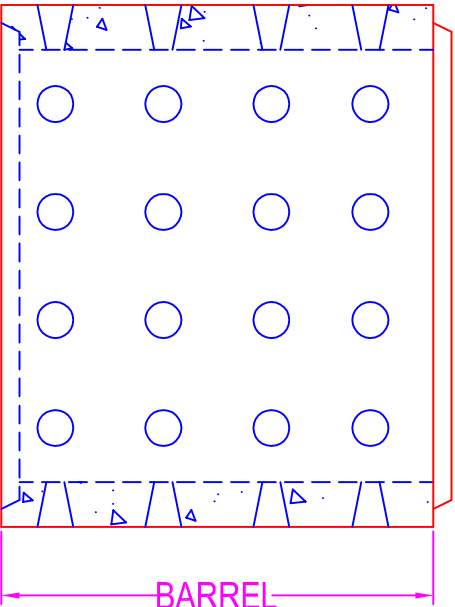
DRYWELL 4'-0" DIA.

NOTES:

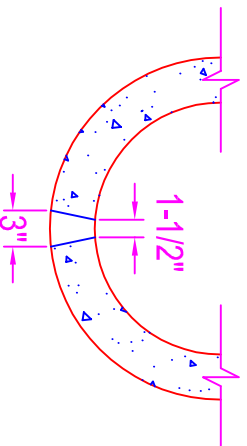
CONCRETE: 5000 psi @ 28 days
 POLYPROPYLENE FIBERS
 BASE: #3 rebar @ 12" o.c.
 DRAIN HOLES: 12" o.c.



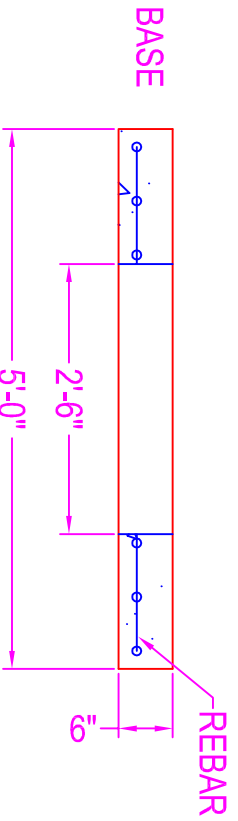
CONE



BARREL
2', 3', 4'
HEIGHTS



DRAIN HOLE
DETAIL



BASE

Zeiser
Wilbert
 VAULT, INC.
 CONCRETE PRODUCTS

750 Howard Street Elmira, NY 14904
 Fax: (607) 737-0291
 Phone: (607) 733-0568
 1-800-472-4335

Title: 4' Dia. Drywell w/ Cone
 Scale: Not To Scale

Drawn By: JPS
 Drawing No.: 1037
 Date: 12-13-99