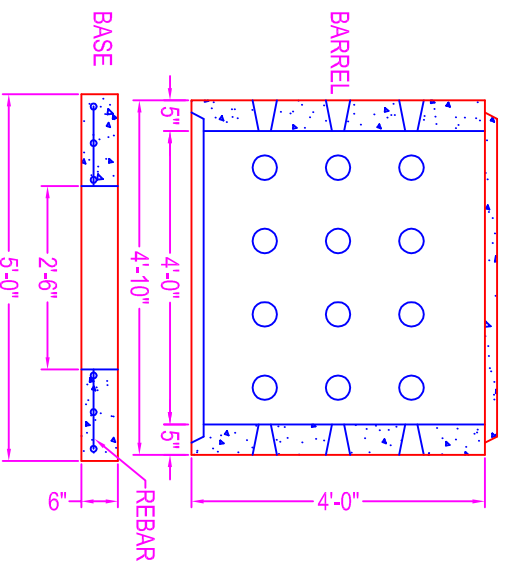
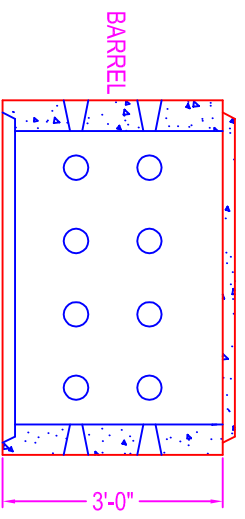
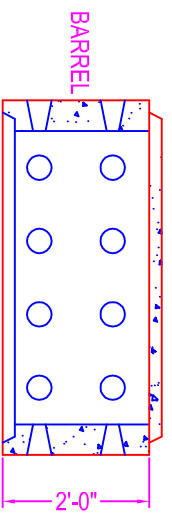
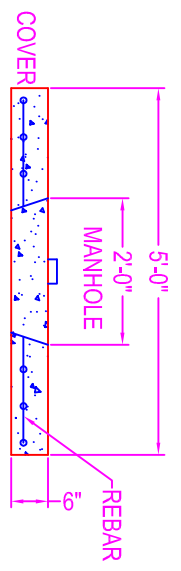
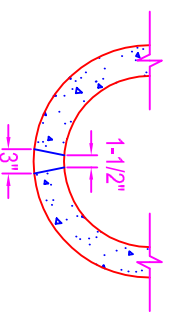


DRYWELL 4'-0" DIA.



- NOTES:
- CONCRETE: 5000 psi @ 28 days
 - POLYPROPYLENE FIBERS
 - COVER: #3 rebar @ 12" o.c.
 - BASE: #3 rebar @ 12" o.c.
 - DRAIN HOLES: 12" o.c.



DRAIN HOLE
DETAIL

Zeiser
Wilbert
VAULT, INC.
CONCRETE PRODUCTS

750 Howard Street Elmira, NY 14904
Fax: (607) 737-0291
Phone: (607) 733-0568
1-800-472-4335

Title: 4' Dia. Drywell

Scale: Not To Scale

Drawn By: JPS

Drawing No.: 1036

Date: 12-13-99