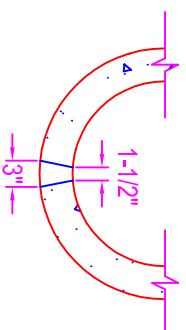
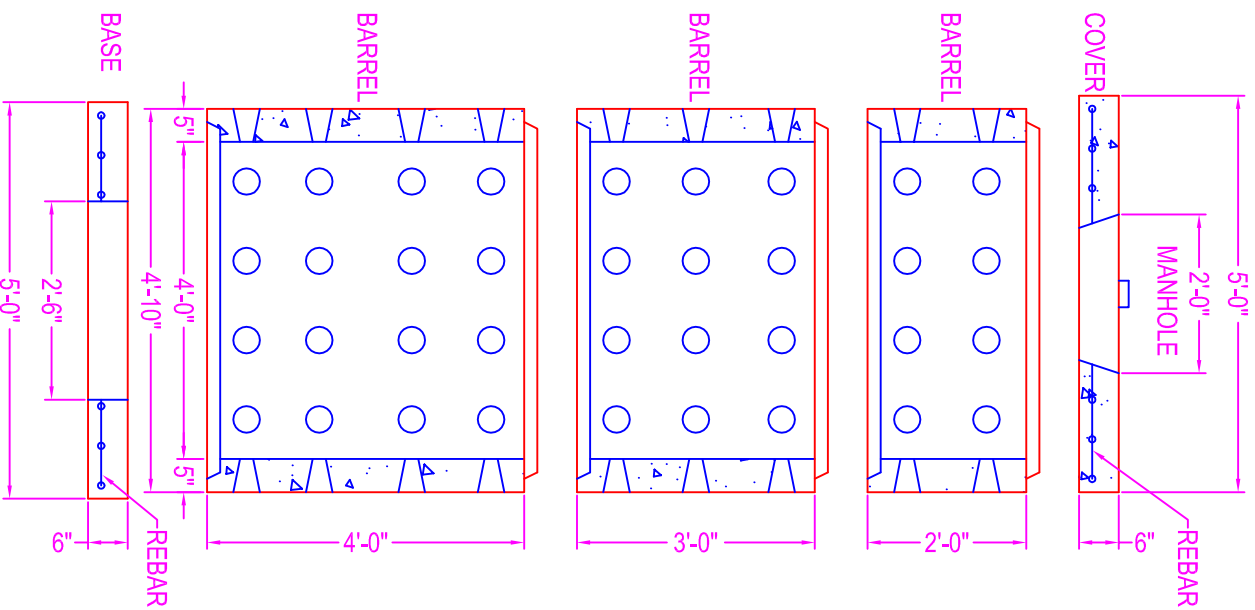


# DRYWELL 4'-0" DIA.

**NOTES:**

- CONCRETE: 5000 psi @ 28 days
- POLYPROPYLENE FIBERS
- COVER: #3 rebar @ 12" o.c.
- BASE: #3 rebar @ 12" o.c.
- DRAIN HOLES: 12" o.c.



DRAIN HOLE  
DETAIL

**Zeiser**  
**Wilbert**  
VAULT, INC.  
CONCRETE PRODUCTS

750 Howard Street Elmira, NY 14904  
 Fax: (607) 737-0291  
 Phone: (607) 733-0568  
 1-800-472-4335

**Title: 4' Dia. Drywell**  
 Scale: Not To Scale

Drawn By: JPS  
 Drawing No.: 1036  
 Date: 12-13-99