

# MANHOLE 4'-0" DIA.

NOTES:  
CONCRETE: 5000 psi @ 28 days

DESIGN SPECS: conform to latest ASTM C-478

REF.: area of circ. steel .12 sq. in. / lin. ft.

STEPS: steel reinforced copolymer polypropylene plastic step conforms to latest ASTM C-478

DESIGN LOAD: HS-20

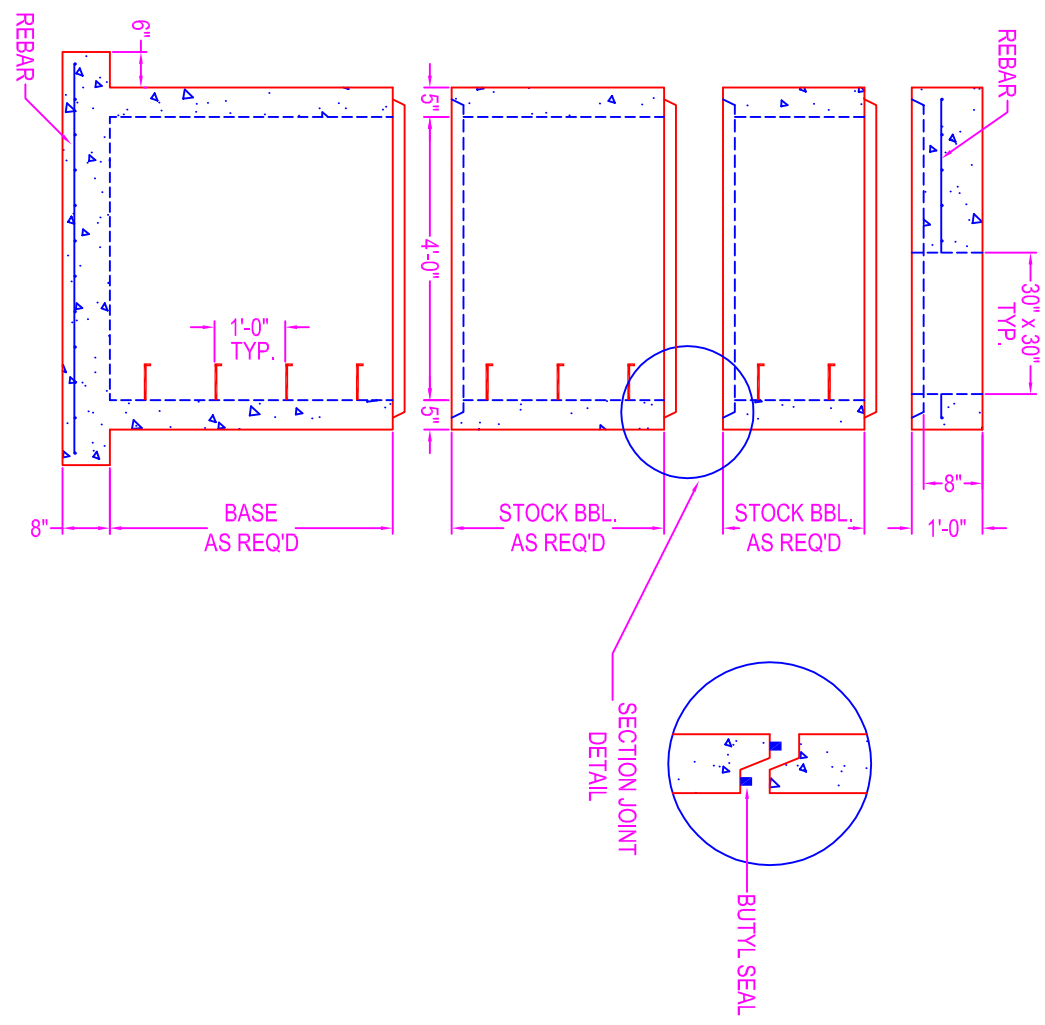
OPENINGS: size & location to conform to dwgs.  
TYPES:

- Corecut - pipe o.d. plus 4"
- Kor-N-Seal - details on spec. sheet
- Star Seal - details on spec. sheet

COATING: if req'd

- TYPES:
- CS-55
  - Epoxy
  - In
  - Out
  - None

BUTYL SEALANT: @ each joint; see spec. sheet



STOCK BARREL HEIGHTS

|       |       |       |
|-------|-------|-------|
| 1'-0" | 2'-0" | 4'-0" |
| 1'-6" | 3'-0" |       |

**Zeiser**  
**Wilbert**  
VAULT, INC.  
CONCRETE PRODUCTS

750 Howard Street Elmira, NY 14904  
Fax: (607) 737-0291  
Phone: (607) 733-0568  
1-800-472-4335

**Title: 4' Dia. Manhole**

Scale: Not To Scale

Drawn By: JPS  
Drawing No.: 05160500  
Date: 5-16-05