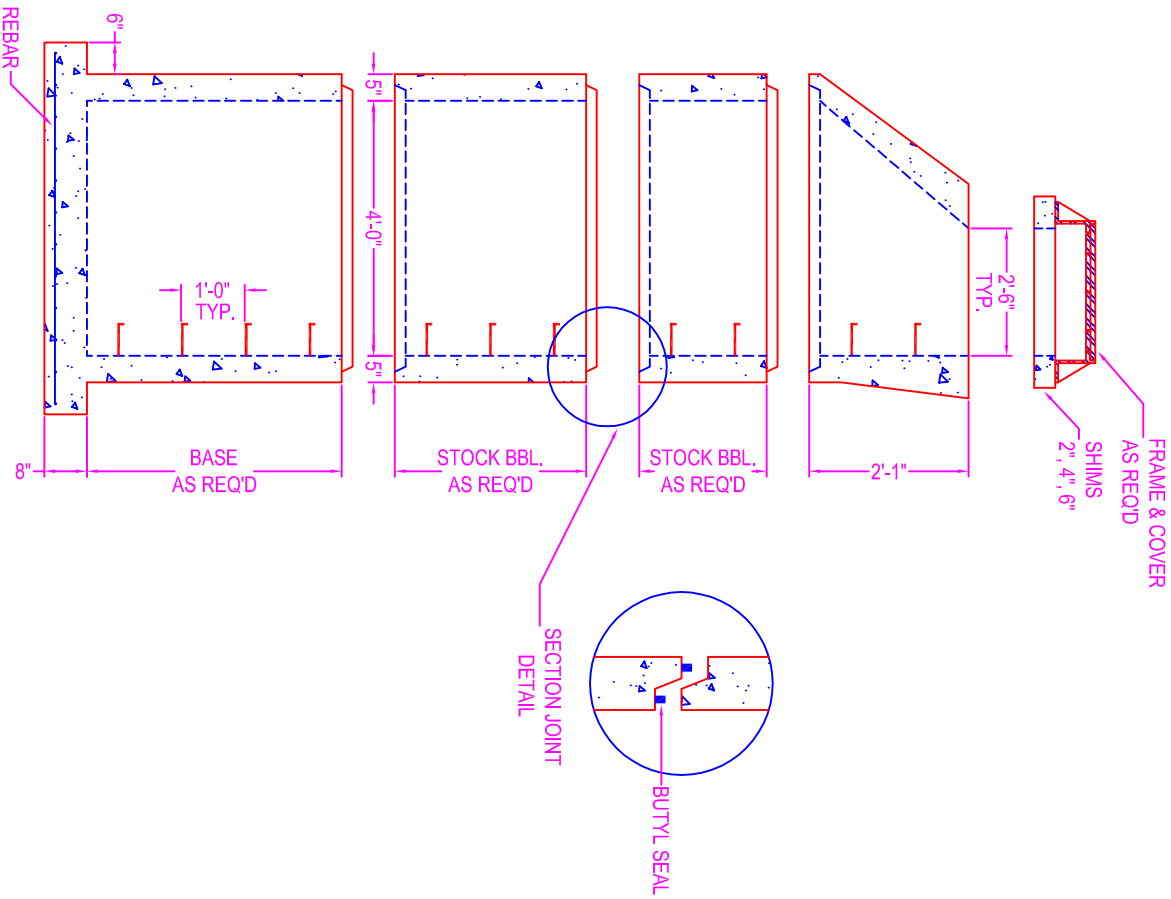


# MANHOLE w/ CONE 4'-0" DIA.



**NOTES:**

- CONCRETE: 5000 psi @ 28 days
- DESIGN SPECS: conform to latest ASTM C-478
- REF.: area of circ. steel .12 sq. in. / lin. ft.
- STEPS: steel reinforced copolymer polypropylene plastic step conforms to latest ASTM C-478

DESIGN LOAD: HS-20

OPENINGS: size & location to conform to dwgs.

**TYPES:**

- Corecut - pipe o.d. plus 4"
- Kor-N-Seal - details on spec. sheet
- Star Seal - details on spec. sheet

COATING: if req'd

**TYPES:**

- CS-55
- Epoxy
- In
- Out
- None

BUTYL SEALANT: @ each joint; see spec. sheet

STOCK BARREL HEIGHTS

- 1'-0"    2'-0"    4'-0"
- 1'-6"    3'-0"

**Zeiser**  
**Wilbert**  
VAULT, INC.  
CONCRETE PRODUCTS

750 Howard Street Elmira, NY 14904  
Fax: (607) 737-0291  
Phone: (607) 733-0568  
1-800-472-4335

**Title: 4' Dia Manhole w/ Cone**

Scale: Not To Scale

Drawn By: JPS  
Drawing No.: 04270602  
Date: 4-27-06