

MANHOLE 4'-0" DIA.

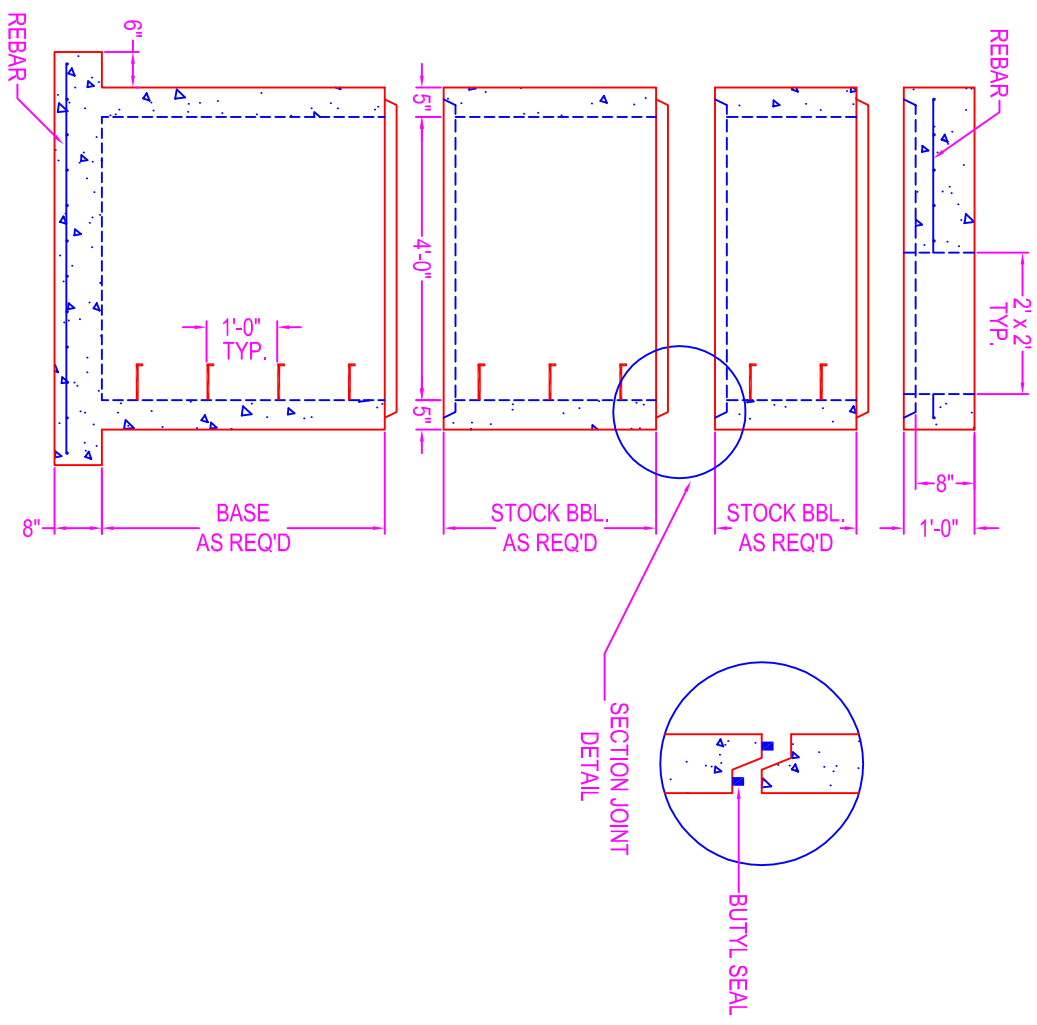
NOTES:

CONCRETE: 5000 psi @ 28 days
 DESIGN SPECS: conform to latest ASTM C-478
 REF.: area of circ. steel .12 sq. in. / lin. ft.
 STEPS: steel reinforced copolymer polypropylene
 plastic step conforms to latest ASTM
 C-478

DESIGN LOAD: HS-20
 OPENINGS: size & location to conform to dwgs.

- TYPES:
- Corecut - pipe o.d. plus 4"
 - Kor-N-Seal - details on spec. sheet
 - Star Seal - details on spec. sheet
- COATING: if req'd

- TYPES:
- CS-55
 - Epoxy
 - In
 - Out
 - None
- BUTYL SEALANT: @ each joint; see spec. sheet



STOCK BARREL HEIGHTS

1'-0"	2'-0"	4'-0"
1'-6"	3'-0"	

Zeiser
Wilbert
 VAULT, INC.
 CONCRETE PRODUCTS

750 Howard Street Elmira, NY 14904
 Fax: (607) 737-0291
 Phone: (607) 733-0568
 1-800-472-4335

Title: 4' Dia. Manhole

Scale: Not To Scale

Drawn By: JPS
 Drawing No.: 05160500
 Date: 5-16-05