

MANHOLE 4'-0" DIA.

NOTES:
CONCRETE: 5000 psi @ 28 days

DESIGN SPECS: conform to latest ASTM C-478

REF.: area of circ. steel .12 sq. in. / lin. ft.

STEPS: steel reinforced copolymer polypropylene plastic step conforms to latest ASTM C-478

DESIGN LOAD: HS-20

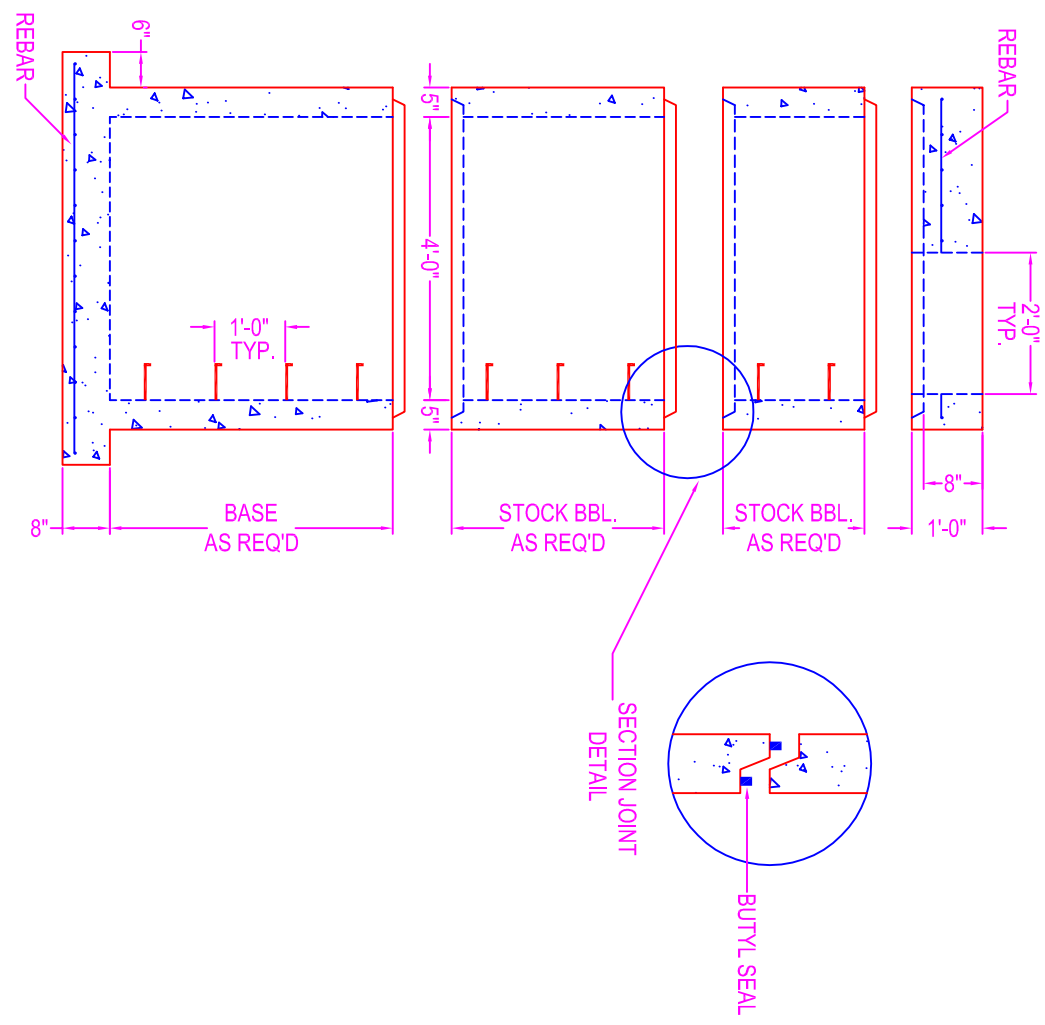
OPENINGS: size & location to conform to dwgs.
TYPES:

- Corecut - pipe o.d. plus 4"
- Kor-N-Seal - details on spec. sheet
- Star Seal - details on spec. sheet

COATING: if req'd

- TYPES:
- CS-55
 - Epoxy
 - In
 - Out
 - None

BUTYL SEALANT: @ each joint; see spec. sheet



STOCK BARREL HEIGHTS

1'-0"	2'-0"	4'-0"
1'-6"	3'-0"	

Zeiser
Wilbert
VAULT, INC.
CONCRETE PRODUCTS

750 Howard Street Elmira, NY 14904
Fax: (607) 737-0291
Phone: (607) 733-0568
1-800-472-4335

Title: 4' Dia. Manhole

Scale: Not To Scale

Drawn By: JPS
Drawing No.: 05160500
Date: 5-16-05