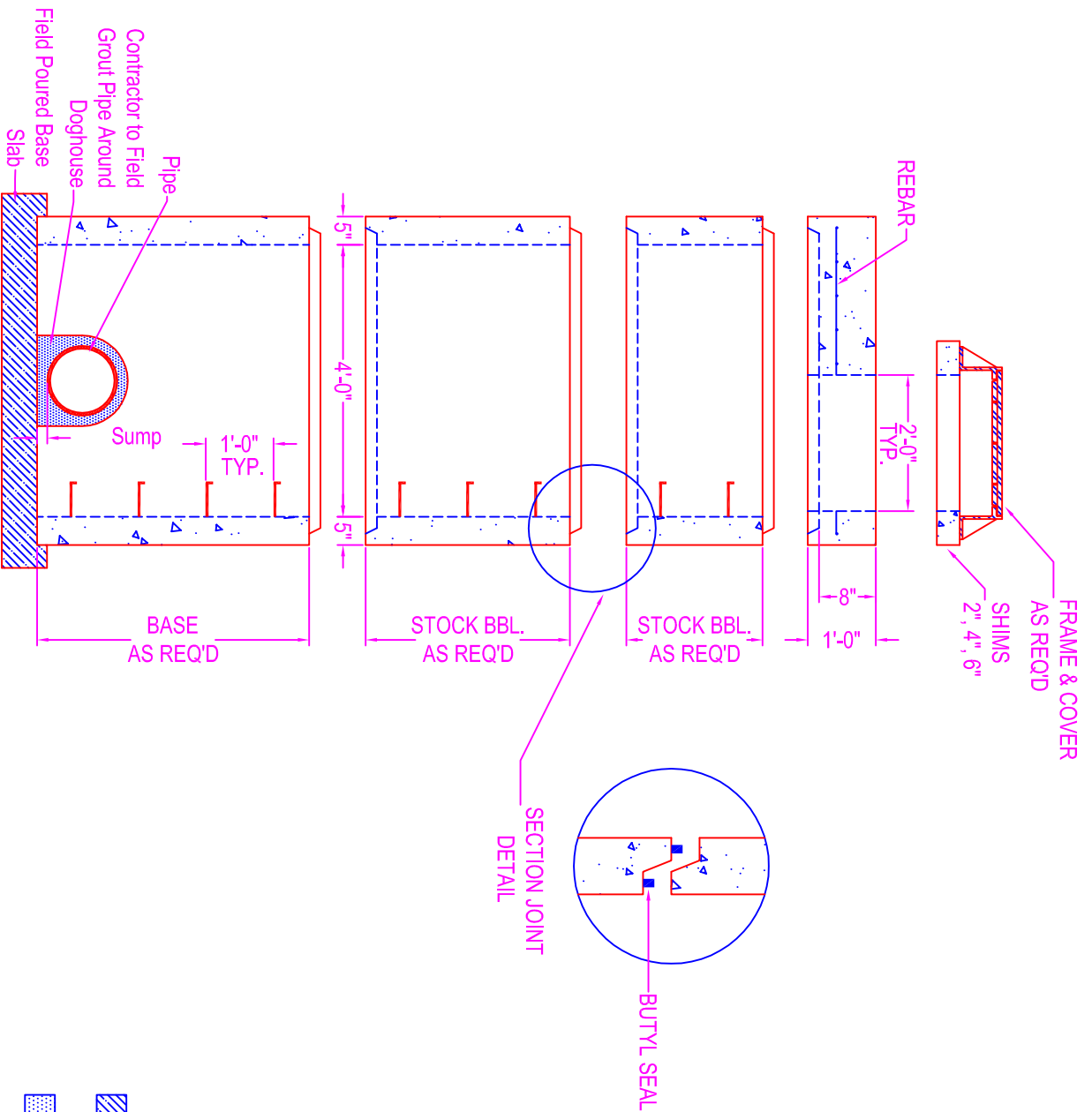


MANHOLE (DOGHOUSE) 4'-0" DIA.



NOTES:

CONCRETE: 5000 psi @ 28 days

DESIGN SPECS: conform to latest ASTM C-478

REF.: area of circ. steel .12 sq. in. / lin. ft.

STEPS: steel reinforced copolymer polypropylene

plastic step conforms to latest ASTM

C-478

DESIGN LOAD: HS-20

OPENINGS: size & location to conform to dwgs.

TYPES:

- Corecut - pipe o.d. plus 2"
- Kor-N-Seal - details on spec. sheet
- Star Seal - details on spec. sheet
- Doghouse Opening - for existing pipe

COATING: if req'd

TYPES:

- CS-55
- Epoxy
- In
- Out
- None

BUTYL SEALANT: @ each joint; see spec. sheet

STOCK BARREL HEIGHTS

1'-0"	2'-0"	4'-0"
1'-6"	3'-0"	

-  Indicates Contractor to Field Pour Base Slab
-  Indicates Contractor to Field Pour Grout Around Pipe

Zeiser
Wilbert
VAULT, INC.
CONCRETE PRODUCTS

750 Howard Street Elmira, NY 14904
Fax: (607) 737-0291
Phone: (607) 733-0568
1-800-472-4335

Title: 4' Dia Doghouse MH

Scale: Not To Scale

Drawn By: JPS
Drawing No.: 04270604
Date: 4-27-06