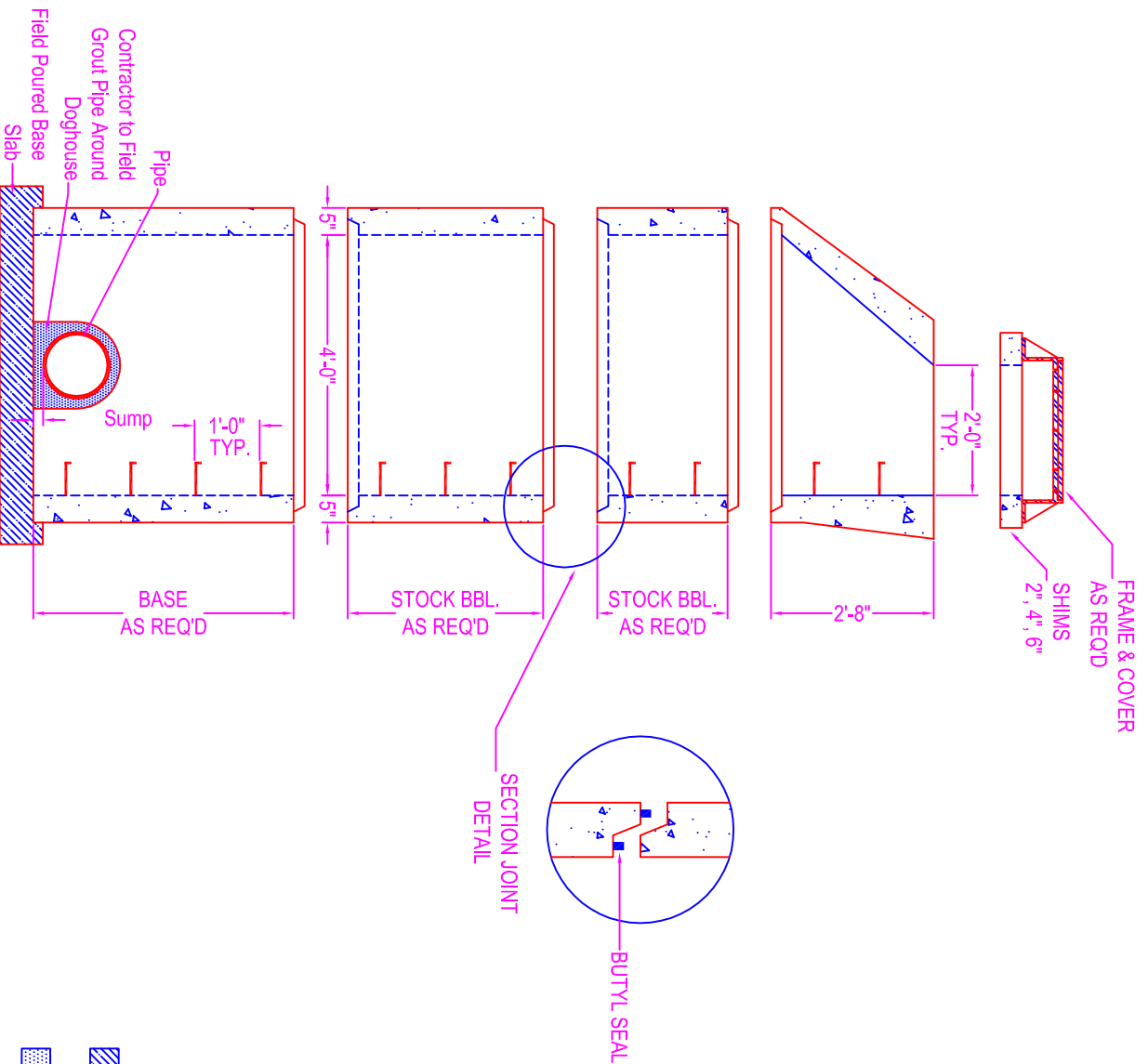


# MANHOLE (DOGHOUSE) 4'-0" DIA.



**NOTES:**

CONCRETE: 5000 psi @ 28 days

DESIGN SPECS: conform to latest ASTM C-478

REF.: area of circ. steel .12 sq. in. / lin. ft.

STEPS: steel reinforced copolymer polypropylene

plastic step conforms to latest ASTM

C-478

DESIGN LOAD: HS-20

OPENINGS: size & location to conform to dwgs.

**TYPES:**

Corecut - pipe o.d. plus 2"

Kor-N-Seal - details on spec. sheet

Star Seal - details on spec. sheet

Doghouse Opening - for existing pipe

COATING: if req'd

**TYPES:**

CS-55

Epoxy

In

Out

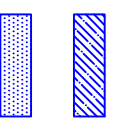
None

BUTYL SEALANT: @ each joint; see spec. sheet

**STOCK BARREL HEIGHTS**

1'-0"    2'-0"    4'-0"

1'-6"    3'-0"



Indicates Contractor to Field Pour Base Slab

Indicates Contractor to Field Pour Grout Around Pipe

**Zeiser**  
**Wilbert**  
VAULT INC.  
CONCRETE PRODUCTS

750 Howard Street Elmira, NY 14904  
Fax: (607) 737-0291  
Phone: (607) 733-0568  
1-800-472-4335

**Title: 4' Dia. Doghouse MH**

Scale: Not To Scale

Drawn By: JPS  
Drawing No.: 04270604  
Date: 4-27-06