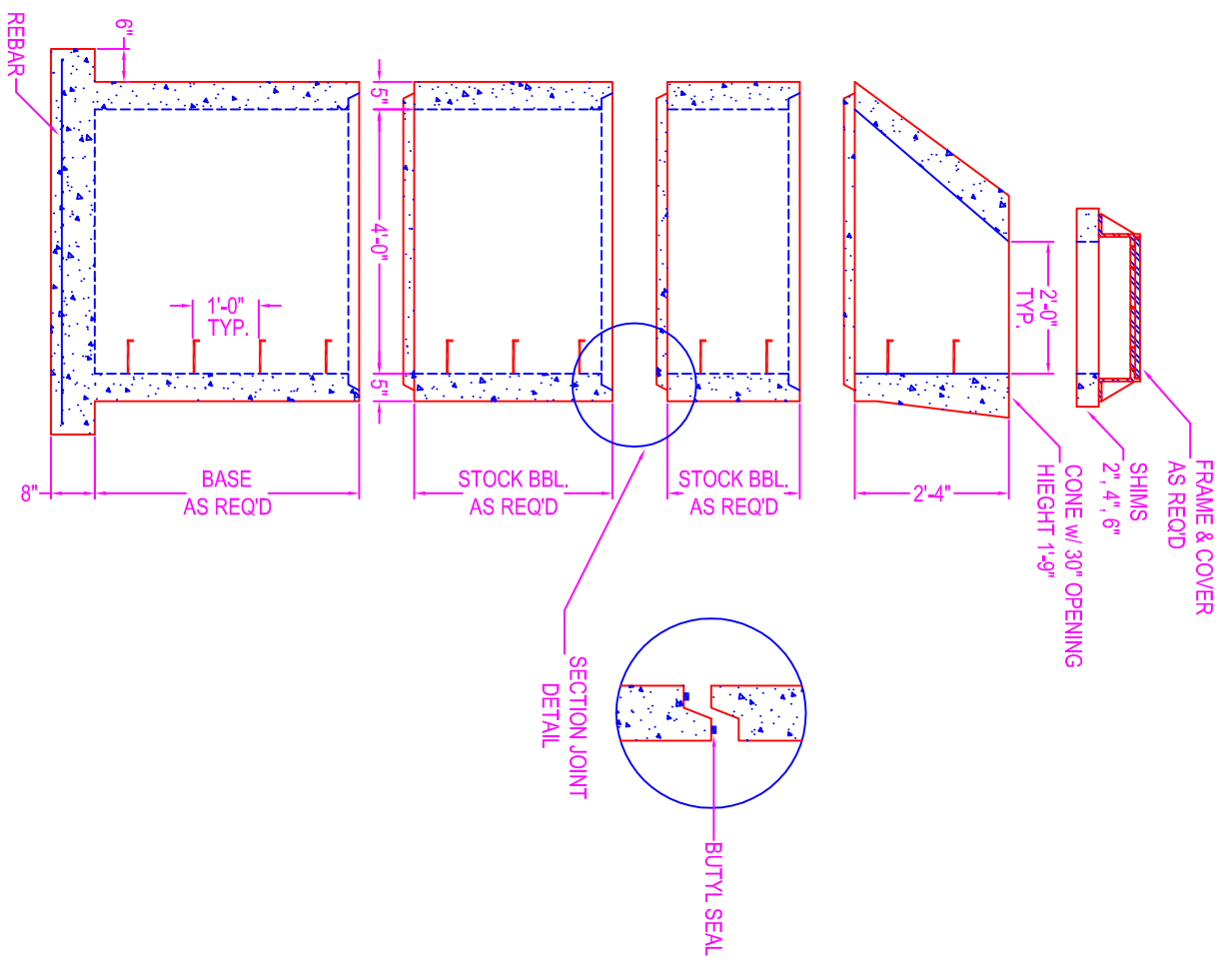


CATCH BASIN W/ CONE 4'-0" DIA.



NOTES:

- CONCRETE: 5000 psi @ 28 days
- DESIGN SPECS: conform to latest ASTM C-478
- REF.: area of circ. steel . 12 sq. in. / lin. ft.
- STEPS: steel reinforced copolymer polypropylene plastic step conforms to latest ASTM C-478

DESIGN LOAD: HS-20
 OPENINGS: size & location to conform to dwgs.

- TYPES:
- Corerout - pipe o.d. plus 4"
 - Kor-N-Seal - details on spec. sheet
 - Star Seal - details on spec. sheet
- COATING: if req'd

- TYPES:
- CS-55
 - Epoxy
 - In
 - Out
 - None
- BUTYL SEALANT: @ each joint; see spec. sheet
 SUMP: 12"

STOCK BARREL HEIGHTS

1'-0"	2'-0"	4'-0"
1'-6"	3'-0"	

Zeiser
Wilbert
 VAULT INC.
 CONCRETE PRODUCTS

750 Howard Street Elmira, NY 14904
 Fax: (607) 737-0291
 Phone: (607) 733-0568
 1-800-472-4335

Title: 4' Dia CB w/ Cone

Scale: Not To Scale

Drawn By: JPS
 Drawing No.: 11240900
 Date: 11-24-09