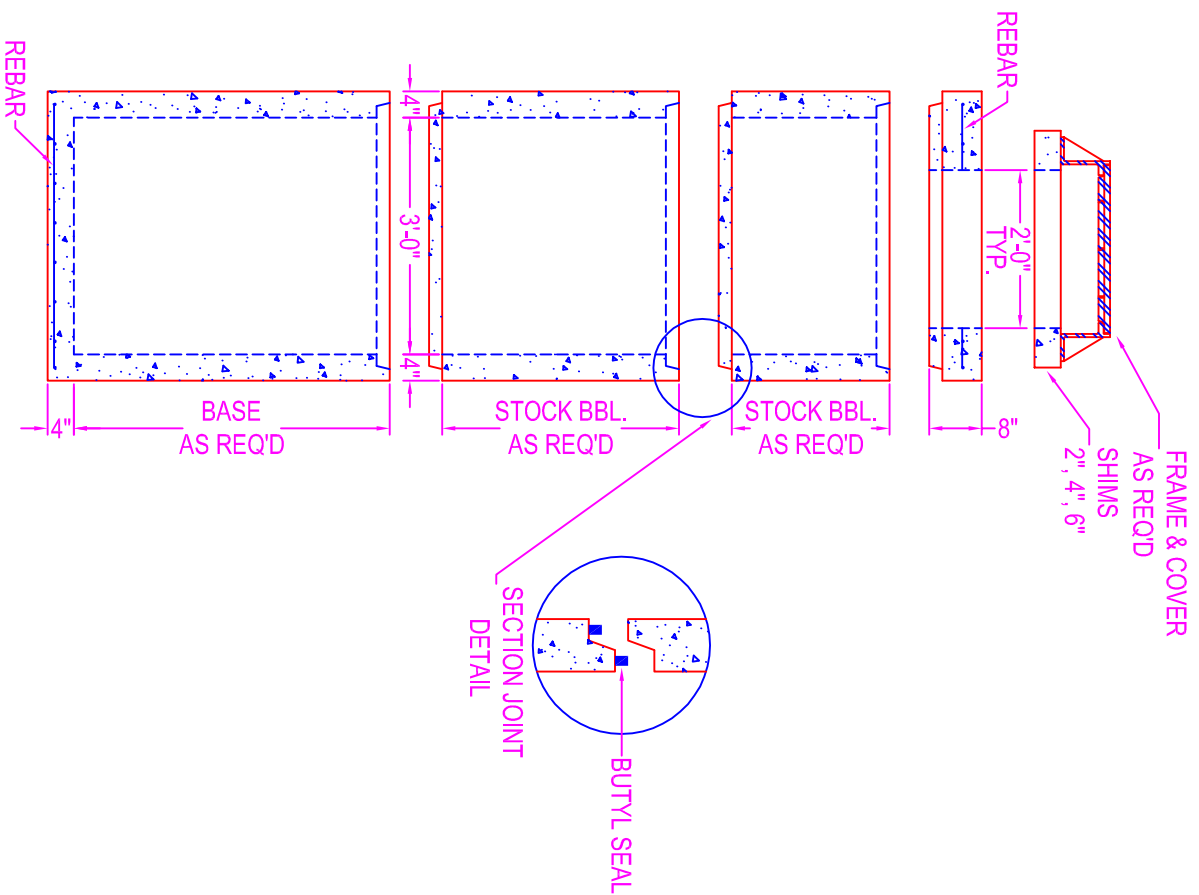


MANHOLE 3'-0" DIA.



NOTES:

- CONCRETE: 5000 psi @ 28 days
- POLYPROPYLENE FIBERS
- REF.: #3 rebar 6" o.c. each way
- In base & cover
- OPENINGS: Corecut - pipe o.d. plus 4"
- COATING: if req'd
- TYPE: CS-55
- Epoxy
- In
- Out
- None
- BUTYL SEALANT: @ each joint; see spec. sheet
- Rubber Boot Gasket Openings & Ladders
- Are Not Available In This Manhole

Zeiser

Wilbert
VAULT, INC.

CONCRETE PRODUCTS

750 Howard Street Elmira, NY 14904

Fax: (607) 737-0291

Phone: (607) 733-0568

1-800-472-4335

Title: 3'-0" DIA. MANHOLE

Scale: Not To Scale

Drawn By: JPS

Drawing No.: 1042

Date: 12-28-99