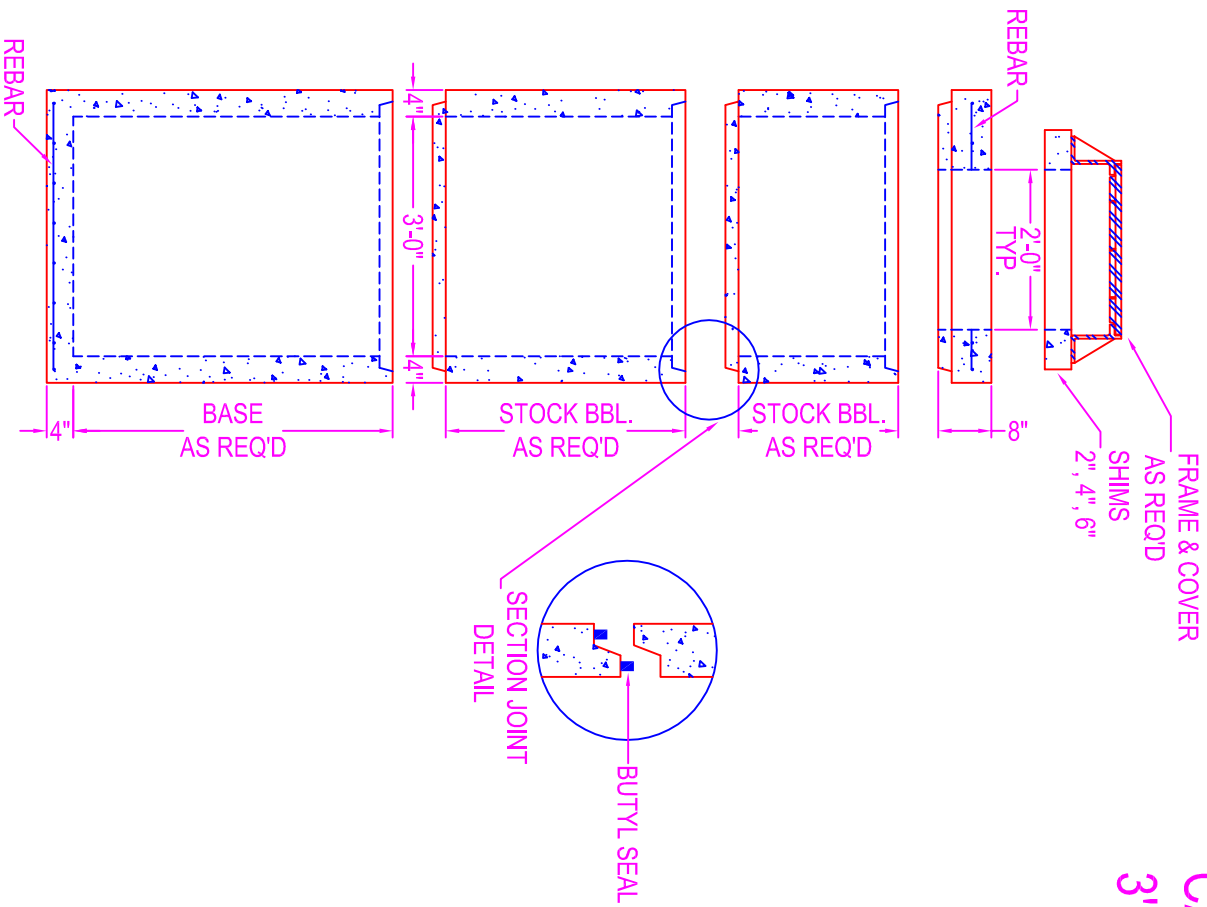


CATCH BASIN 3'-0" DIA.



NOTES:

- CONCRETE: 5000 psi @ 28 days
 - POLYPROPYLENE FIBERS
 - REF.: #3 rebar 6" o.c. each way
in base & cover
 - OPENINGS: Corecut - pipe o.d. plus 4"
 - COATING: if req'd
 - TYPE: CS-55
 - Epoxy
 - In
 - Out
 - None
- BUTYL SEALANT: @ each joint; see spec. sheet
Rubber Boot Gasket Openings & Ladders
Are Not Available In This Manhole

Zeiser

Wilbert
VAULT, INC.

CONCRETE PRODUCTS

750 Howard Street Elmira, NY 14904

Fax: (607) 737-0291

Phone: (607) 733-0568

1-800-472-4335

Title: 3'-0" DIA CATCH BASIN

Scale: Not To Scale

Drawn By: JPS

Drawing No.: 1056

Date: 12-28-99