

METER VAULT

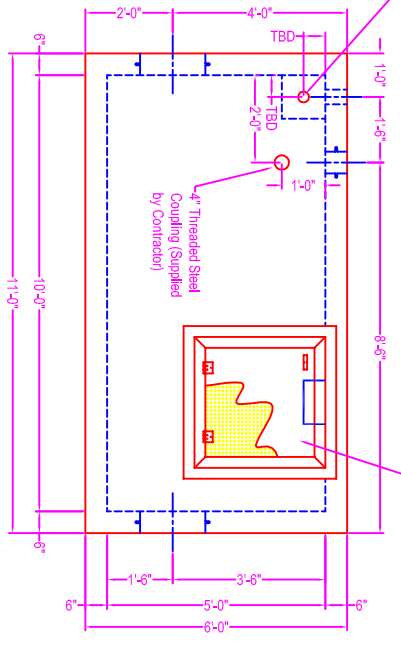
NOTES:

- ASTM - 478
- CONCRETE: 5000 psi @ 28 days
- REF.: Cover - #6 rebar @ 6" o.c. in short direction
- #5 rebar @ 10" o.c. in long direction
- (1-1/2" conc cover from bottom up)
- Riser - #4 rebar @ 6" o.c. each way
- (2" conc cover from inner core)
- Base Riser - #5 rebar @ 6" o.c. each way
- (2" conc cover from inner core)
- Base Slab - #5 rebar @ 6" o.c. in short direction
- #4 rebar @ 6" o.c. in long direction
- (2" conc cover from top down)
- OPENINGS: plastic wall sleeves w/ Link Seal gaskets as shown on detail - see spec sheet
- LADDER: Penn Inserts aluminum ladder w/ safety post
- HATCH: Penn Inserts ATH 3030S aluminum hatch
- HS-20 rated w/ safety grate (non impact)
- LIFTING: sink it handles cast in walls (base and riser) sink it handles cast in top of cover slab
- COATING: Exterior Only w/ CS-55 by Con-Seal

CS-3 Plastic Wall Sleeve w/ 4 Links of LS-300 Cast In Cover Slab for 1" PVC Pipe

Weights:
Cover: 6,600 #
Riser: 7,200 #
Base & Walls: 18,900 #

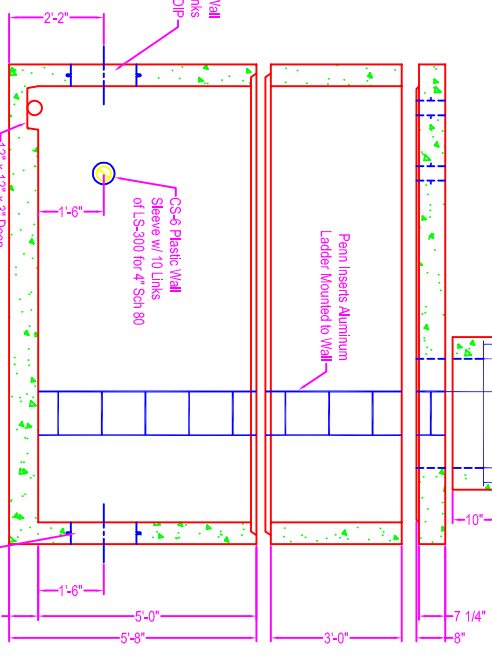
Penn Inserts ATH 3030S Aluminum HS-20 Hatch w/ Safety Grate Cast in 12" Slab



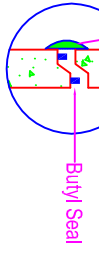
**TBD = Dimension to be determined by contractor prior to start of production

Safety/Up Post For Ladder

Penn Inserts Aluminum Ladder Mounted to Wall



Contractor to parge interior joints w/ hydraulic cement once structure is set in field (contractor shall be responsible for ultimate watertightness)



Zeiser

Wilbert
VAULT, INC.

CONCRETE PRODUCTS

750 Howard Street Elmira, NY 14904

Fax: (607) 737-0291

Phone: (607) 733-0568

1-800-472-4335

Title: Meter Vault

Drawn By: JPS

Drawing No.: 04071700

Scale: Not To Scale

Date: 4-7-17