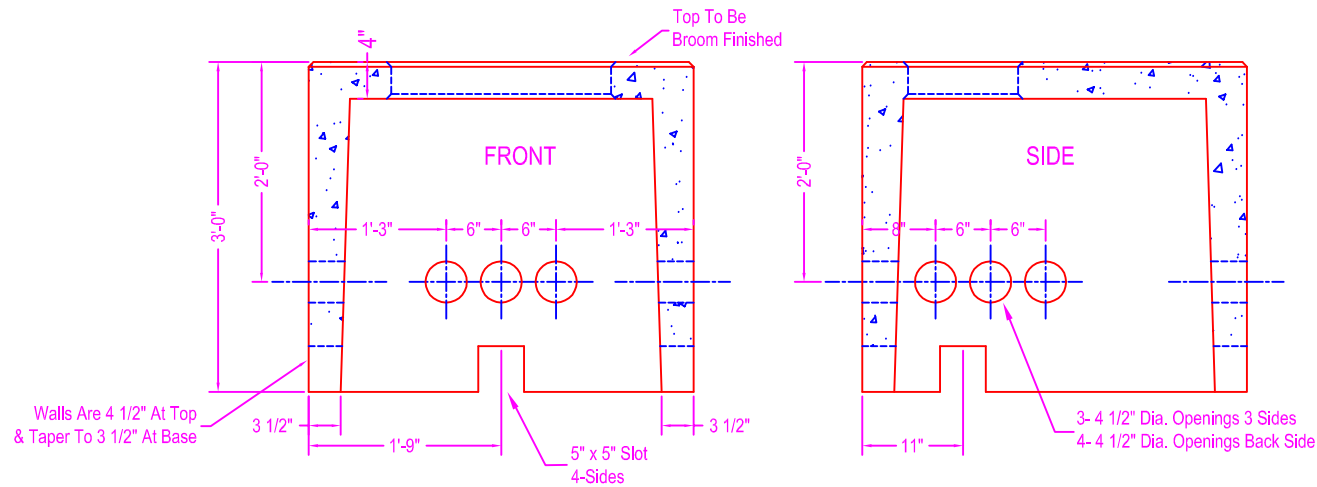


TRANSFORMER VAULT 145-101

NOTES:

- CONCRETE: 5000 psi @ 28 days
- REF: #6x6 10/10 wire mesh or as req'd for strength mesh to be overlapped at seams in top & sides
- Top to be parallel with bottom
- Top to be brush finished



	750 Howard Street Elmira, NY 14904 Fax: (607) 737-0291 Phone: (607) 733-0568 1-800-472-4335	Title: Trans Vault 145-101	Drawn By: JPS
		Scale: Not To Scale	Drawing No.: 1062
			Date: 3-10-00