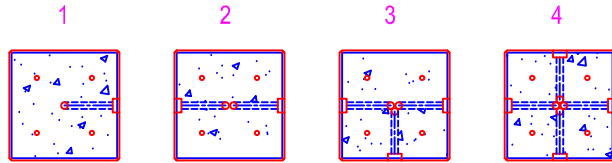


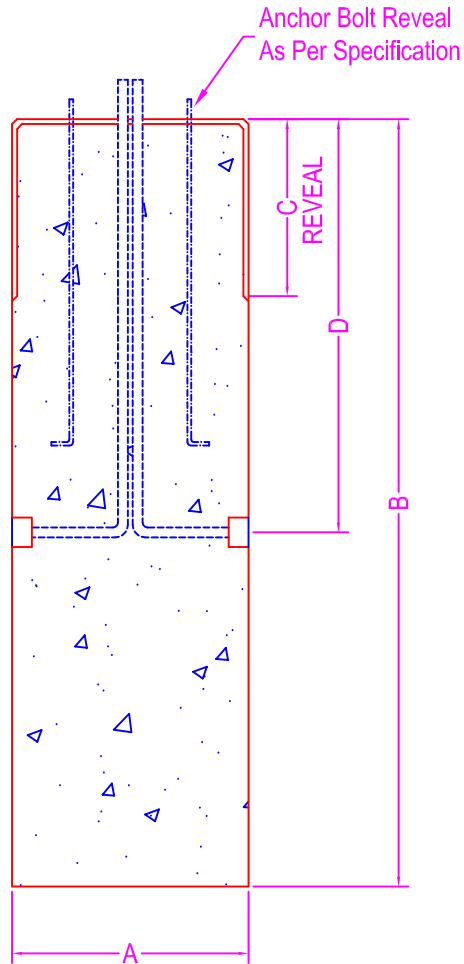
Typical Conduit Directions (or as per spec.)



LIGHT POLE BASE

NOTES:

CONCRETE: 5000 psi @ 28 days
 REF: #4 rebar @ 10" o.c. vert.
 #4 rebar @ 12" o.c. horiz.
 w/ 2" clearance from all sides
 Chamfer Edges
 All Dimensions to be Provided by Contractor
 As Well as Conduit, Template, and Anchor Bolts
 Light Pole Can Be Manufactured To Specific
 Design



DIMENSIONS:

Anchor Bolt Reveal =

A =

B =

C =

D =

	750 Howard Street Elmira, NY 14904 Fax: (607) 737-0291 Phone: (607) 733-0568 1-800-472-4335	Title: Square Light Pole Base	Drawn By: JPS
		Scale: Not To Scale	Drawing No.: 1067
			Date: 3-14-00