

# SEPTIC TANK ST-5000

**NOTES:**

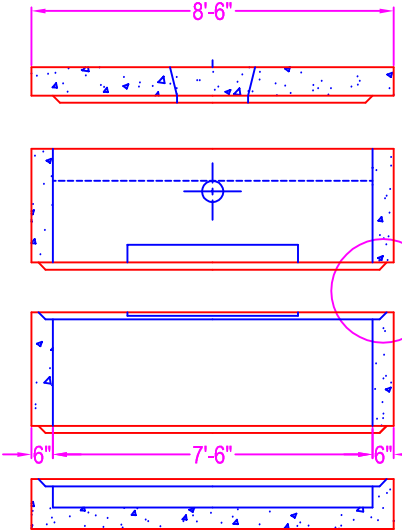
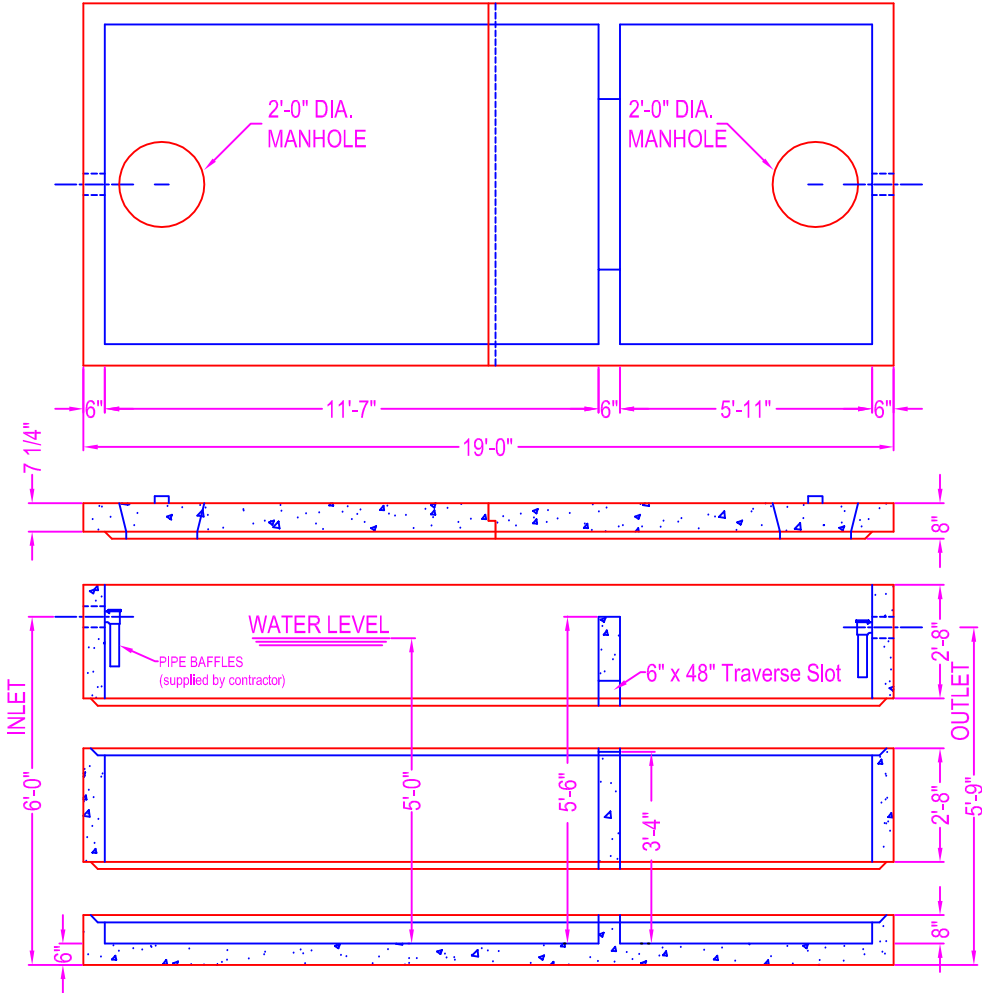
CONCRETE: 5000 psi @ 28 days  
 REF: rebar grade 60 ASTM A615  
 ENTRAINED AIR: 5% to 8%  
 DESIGN LOAD: AASHTO design  
 LIVE LOAD: H20 traffic rating  
 PIPE OPENINGS:

- pipe gasket seals
  - 4" PVC - Kor-N-Seal boot
  - 6" PVC - Kor-N-Seal boot
  - 8" PVC - Kor-N-Seal boot
- grout filled opening
  - 4" PVC - 6" coreout (grout filled in field)
  - 6" PVC - 8" coreout (grout filled in field)
  - 8" PVC - 12" coreout (grout filled in field)

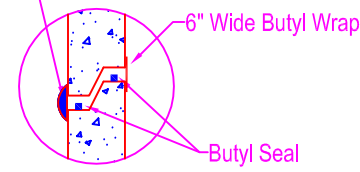
The ultimate watertightness of the tank (grout filled pipe openings and section joint) is the responsibility of the installing contractor.

**WEIGHTS:**

Base: 2.99 cy = 12,600 # (approx)  
 Walls: 6.65 cy = 27,900 # (approx)  
 Cover: 3.99 cy = 16,800 # (approx)



Contractor to parge interior joint w/ hydrolic non-shrink grout once tank is set in place and given time to settle



**JOINT DETAIL**

- Joint Sealant  
 Butyl Seal - Con Seal CS-102 (1") supplied by ZWV  
 Butyl Wrap - Con Seal CS-213 (6" wide) supplied by ZWV (optional)  
 Hydrolic non-shrink grout supplied and applied by contractor

<p><b>Zeiser</b>  <b>Wilbert</b>          VAULT, INC.          CONCRETE PRODUCTS</p>	750 Howard Street Elmira, NY 14904 Fax: (607) 737-0291 Phone: (607) 733-0568 1-800-472-4335
	<p><b>Title: ST-5000 H20 Traffic</b></p>

<p><b>Title: ST-5000 H20 Traffic</b></p>
<p><b>Scale: Not To Scale</b></p>

<p>Drawn By: JPS</p>
<p>Drawing No.: 01050917</p>
<p>Date: 1-5-09</p>