

# SEPTIC TANK ST-4500

## NOTES:

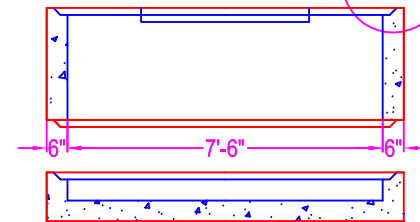
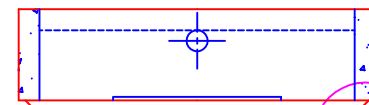
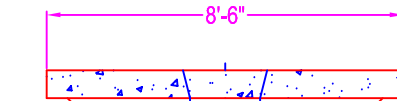
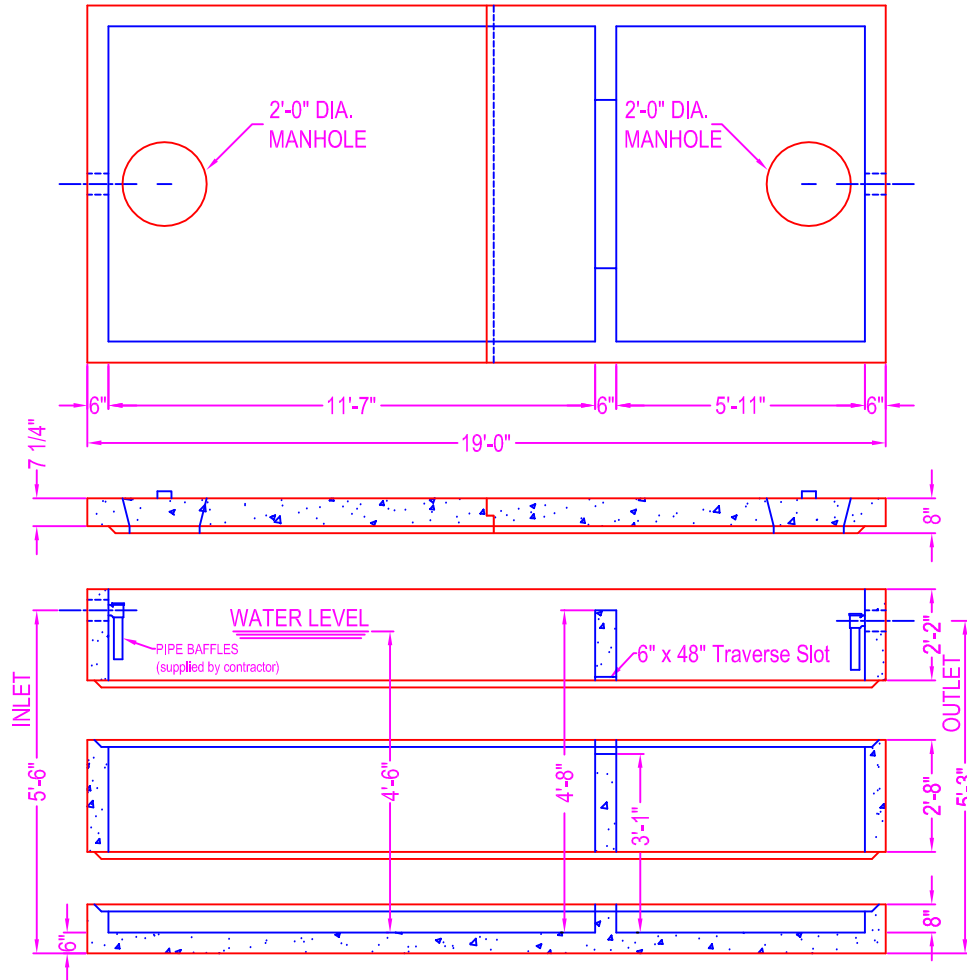
CONCRETE: 5000 psi @ 28 days  
 REF: rebar grade 60 ASTM A615  
 ENTRAINED AIR: 5% to 8%  
 DESIGN LOAD: AASHTO design  
 LIVE LOAD: H20 traffic rating  
 PIPE OPENINGS:

- pipe gasket seals
- 4" PVC - Kor-N-Seal boot
- 6" PVC - Kor-N-Seal boot
- 8" PVC - Kor-N-Seal boot
- grout filled opening
  - 4" PVC - 6" coreout (grout filled in field)
  - 6" PVC - 8" coreout (grout filled in field)
  - 8" PVC - 12" coreout (grout filled in field)

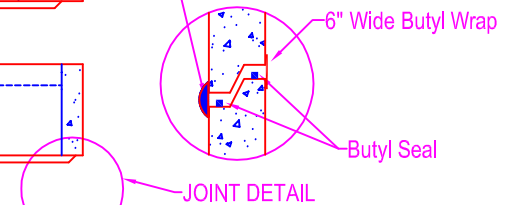
The ultimate watertightness of the tank (grout filled pipe openings and section joint) is the responsibility of the installing contractor.

## WEIGHTS:

Base: 2.99 cy = 12,600 # (approx)  
 Walls: 6.05 cy = 25,400 # (approx)  
 Cover: 3.99 cy = 16,800 # (approx)



Contractor to purge interior joint w/ hydraulic non-shrink grout once tank is set in place and given time to settle



Joint Sealant  
 Butyl Seal - Con Seal CS-102 (1") supplied by ZWV  
 Butyl Wrap - Con Seal CS -213 (6" wide) supplied by ZWV (optional)  
 Hydraulic non-shrink grout supplied and applied by contractor

**Zeiser**  
**Wilbert**  
 VAULT, INC.  
 CONCRETE PRODUCTS

750 Howard Street Elmira, NY 14904  
 Fax: (607) 737-0291  
 Phone: (607) 733-0568  
 1-800-472-4335

Title: ST-4500 H20 Traffic

Scale: Not To Scale

Drawn By: JPS

Drawing No.: 01050916

Date: 1-5-09