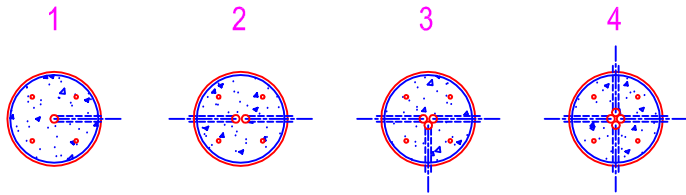


Typical Conduit Directions (or as per specs):



LIGHT POLE BASE

NOTES:

CONCRETE: 5000 psi @ 28 days

REF: area of circ steel .19 sq in / lin ft

4 ea - #5 rebar in vertical direction

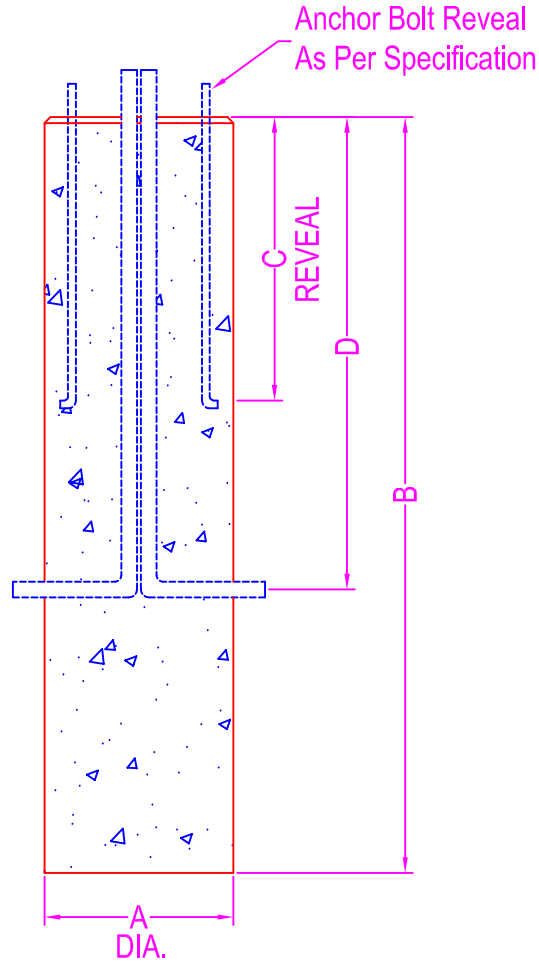
Chamfer top edge

All Dimensions to be Provided by Contractor

As Well as Conduit, Template, and Anchor Bolts

Light Pole Can Be Manufactured To Specific

Design



DIMENSIONS:


Anchor Bolt Reveal =

A =

B =

C =

D =

Zeiser

Wilbert
 VAULT, INC.
 CONCRETE PRODUCTS

750 Howard Street Elmira, NY 14904
 Fax: (607) 737-0291
 Phone: (607) 733-0568
 1-800-472-4335

Title: Round Light Pole Base
 Scale: Not To Scale

Drawn By: JPS
 Drawing No.: 1068
 Date: 3-14-00