

PRODUCT NUMBER

PABIKEGRSC

CATALOG NUMBER

N/A

STEEL GRATE

LOAD RATING

H20

COATING

PAINTED

ESTIMATED WEIGHT

GRATE: 214 LBS 100kg

MATERIAL SPECIFICATION

GRATE - STEEL
SEE NOTES

OPEN AREA

867 SQ. INCHES

√ DESIGNATES MACHINE
SURFACE

DRAWN
CJC

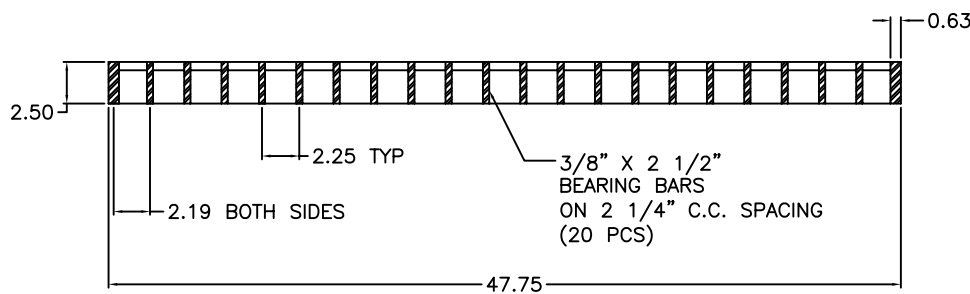
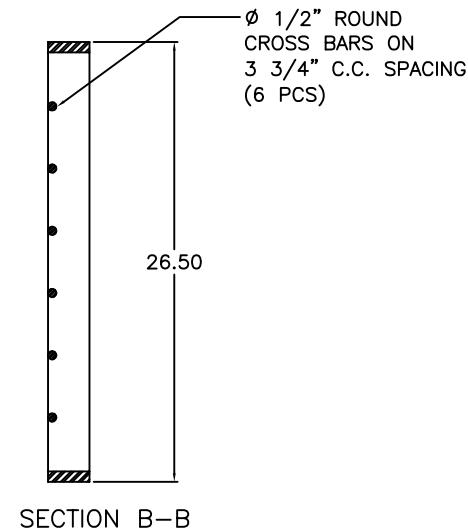
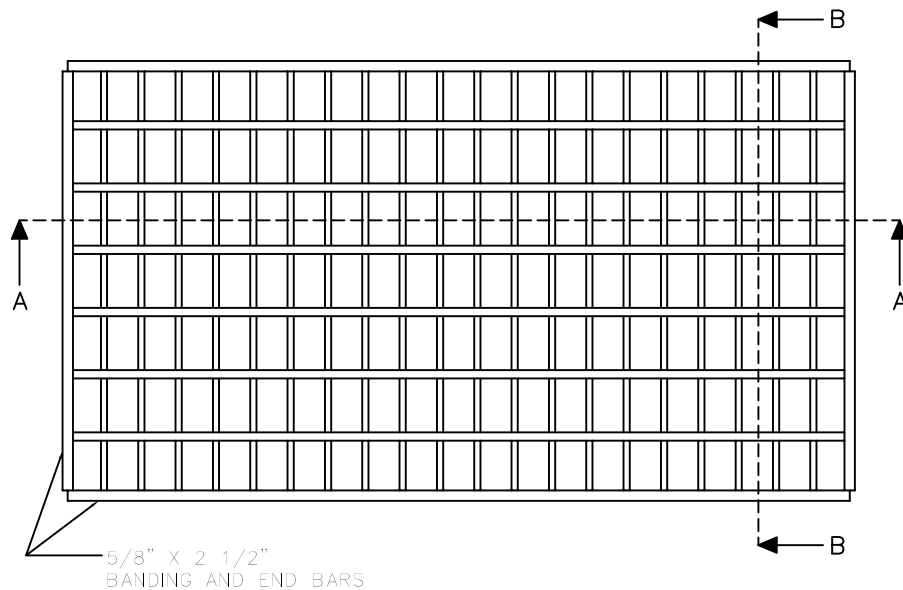
DATE
10/08/04

LAST REVISED
CJC

DATE
01/05/09

REFERENCE INFORMATION

OOXXXXXX



SECTION A-A

NOTES:

- 1.) ALL 3/8" X 2 1/2" BARS SHALL CONFORM TO A.S.T.M. A36MOD STEEL (MIN. 50 KSI)
- 2.) CROSS BARS SHALL CONFORM TO A.S.T.M. A36
- 3.) ALL 5/8" X 2 1/2" BARS SHALL CONFORM TO A.S.T.M. A36
- 4.) ENTIRE GRATE SHALL BE PAINTED BLACK PER PENNDOT SPECIFICATIONS.