

# ELECTRIC MANHOLE

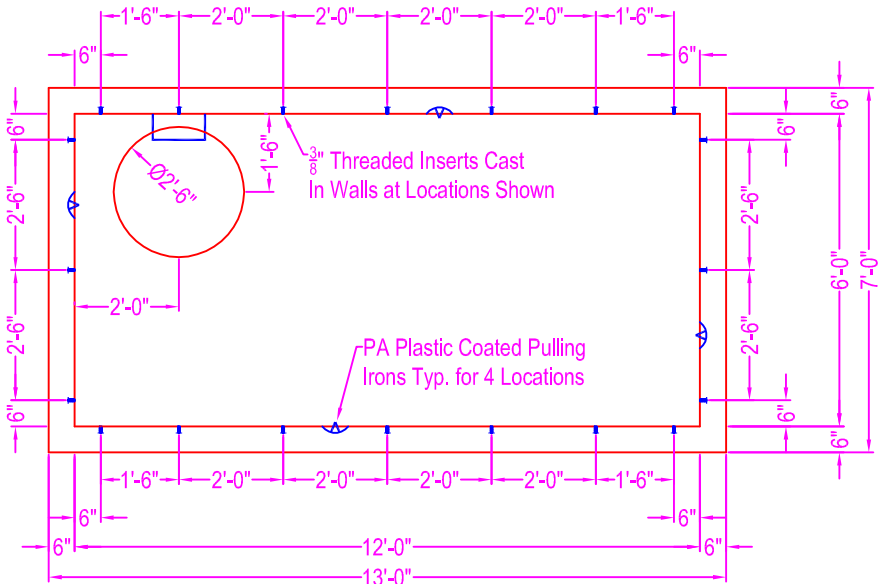
**NOTES:**

- CONCRETE: 5000 psi @ 28 days
- REF: Cover - #6 rebar @ 6" o.c. in short direction  
#5 rebar @ 11" o.c. in long direction  
4 ea #6 rebar diamond around opening  
(1-1/2" conc cover from bottom up)
- Riser #1 - #5 rebar @ 6" o.c. in horiz. direction  
#4 rebar @ 8" o.c. in vert. direction  
(2 1/2" conc cover from inner core)
- Base Riser - #4 rebar @ 6" o.c. horiz. direction  
#5 rebar @ 6" o.c. vert. direction  
(2" conc cover from inner core)
- Base - #5 rebar @ 6" o.c. in short direction  
#4 rebar @ 6" o.c. in long direction  
#5 rebar bent "L's" 18" x 2'-6" tails from base  
(2" conc cover from top down)
- INSERTS: 3/8" x 16 threaded inserts cast in walls at locations shown
- STEPS: MA industries polypropylene steps
- SEAL: Con Seal CS-102 butyl seal @ joints
- CASTING: Neenah #R-1557 A bolted lid w/ gasket seal
- LIFTING: PA pulling irons cast in base and riser sect.

**WEIGHTS:**

- Base & Jack Wall: 15,200 #
- Riser #1: 14,000 #
- Cover: 10,000 #

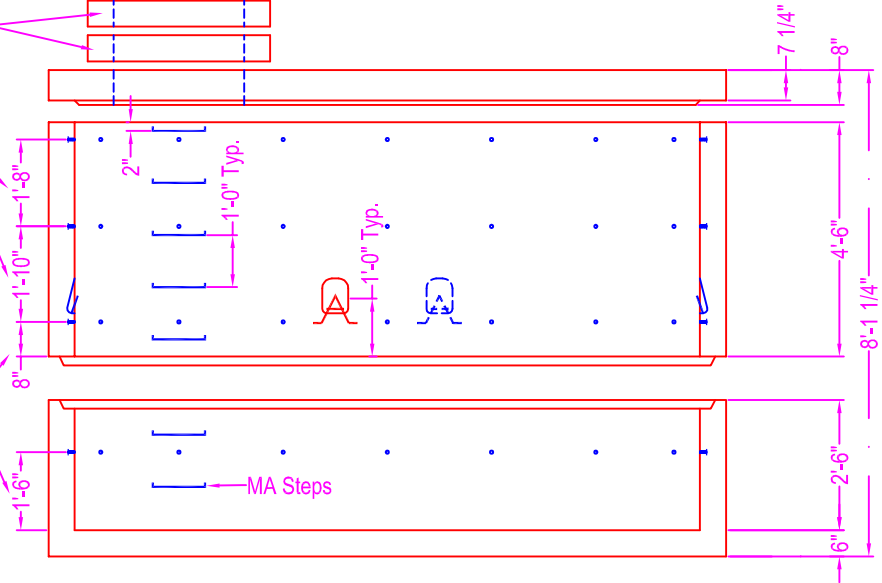
Note: Contractor shall be responsible for the ultimate watertightness of tank.



30" Dia. Manhole Shim 4" High  
30" Dia. Manhole Shim 6" High

Dimensions Shown are Typical for Threaded Inserts

Dimensions Shown are Typical for Threaded Inserts



	750 Howard Street Elmira, NY 14904 Fax: (607) 737-0291 Phone: (607) 733-0568 1-800-472-4335	<b>Title: Electrical Manhole</b>	Drawn By: JPS
	Scale: Not To Scale	Drawing No.: 03260600	
	Date: 3-26-06		