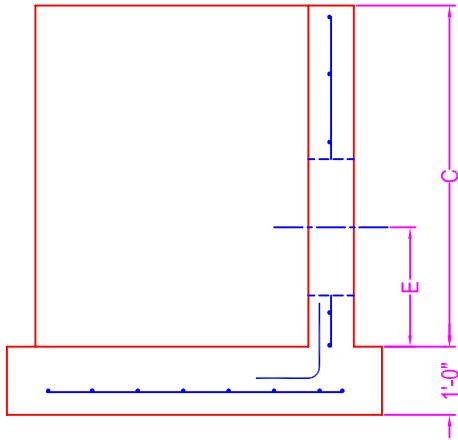
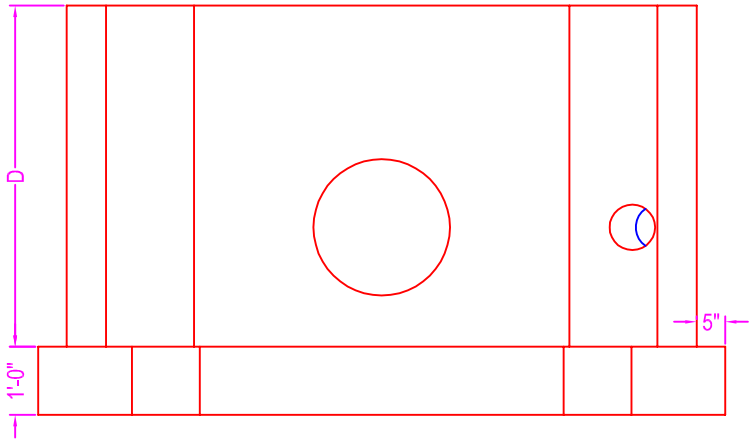
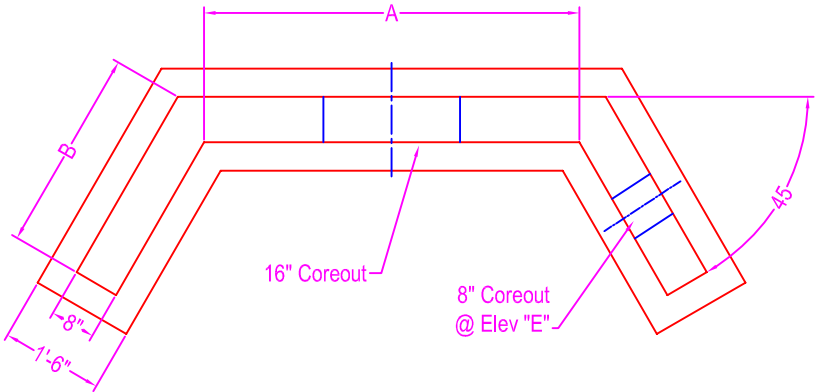


# WINGWALL w/ APRON (2ea)

**NOTES:**

- CONCRETE: 5000 psi @ 28 days
- REF: #4 rebar @ 8" o.c. each way in base
- #5 rebar tails from base to wall
- #4 rebar @ 12" o.c. each way in walls
- OPENING: coreout; pipe o.d. plus 4"

- Dimensions:**
- A = 4'-0"
  - B = 2'-0"
  - C = 5'-0"
  - D = 5'-0"
  - E = 3'-0"
  - Opening = 16" and 8"



	750 Howard Street Elmira, NY 14904 Fax: (607) 737-0291 Phone: (607) 733-0568 1-800-472-4335	<b>Title: Headwall w/ Apron</b>	Drawn By: JPS
		Scale: Not To Scale	Drawing No.: 11160400
			Date: 11-17-04