

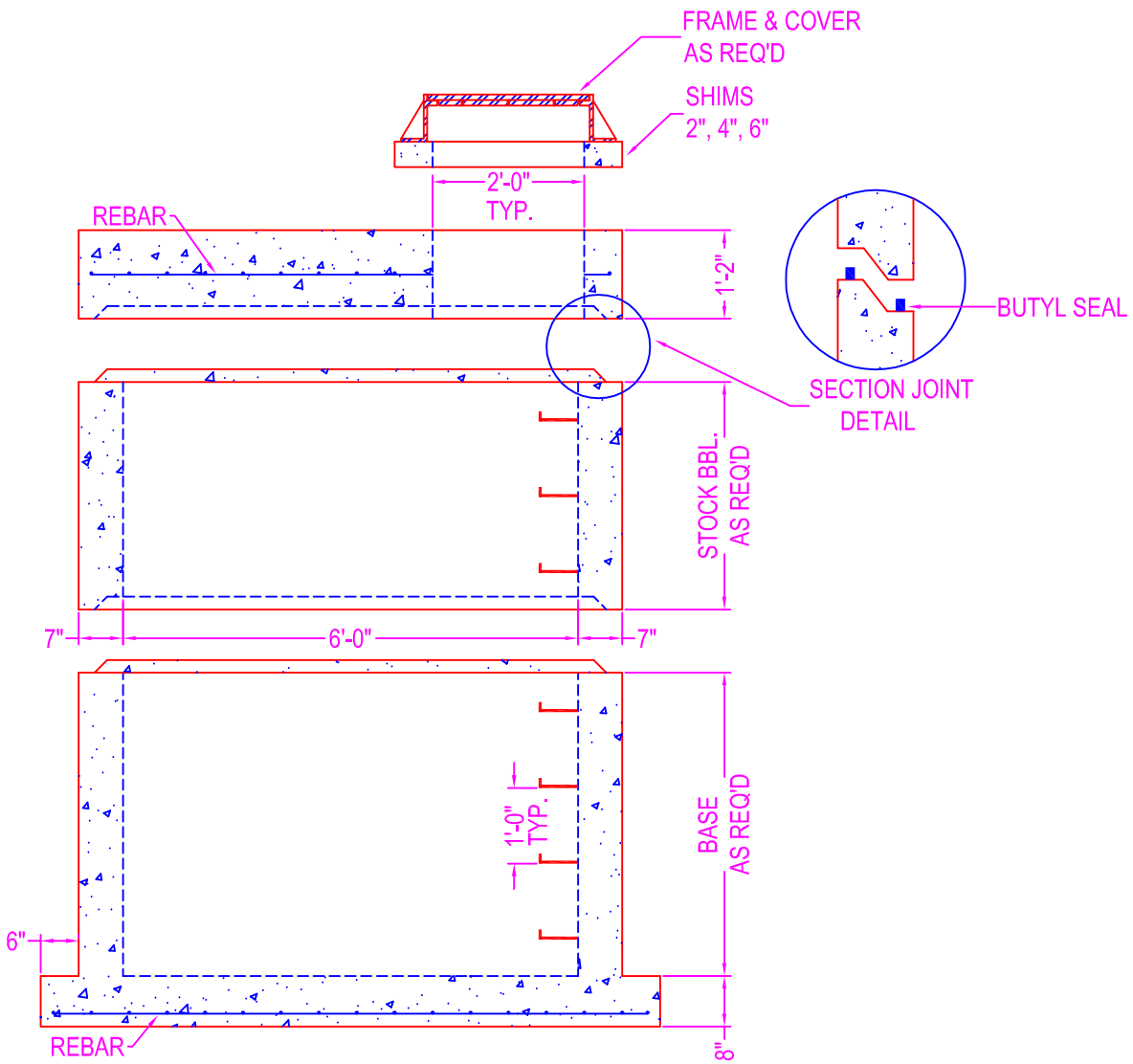
MANHOLE 6'-0" DIA.


NOTES:

- CONCRETE: 5000 psi @ 28 days
- DESIGN SPECS: conform to latest ASTM C-478
- REF.: area of circ. steel .18 sq. in. / lin. ft.
- STEPS: steel reinforced copolymer polypropylene plastic step conforms to latest ASTM C-478
- DESIGN LOAD: HS-20
- OPENINGS: size & location to conform to dwgs.
- TYPES:
 - Coreout - pipe o.d. plus 4"
 - Kor-N-Seal - details on spec. sheet
 - Star Seal - details on spec. sheet
- COATING: if req'd
- TYPES:
 - CS-55
 - Epoxy
 - In
 - Out
 - None
- BUTYL SEALANT: @ each joint; see spec. sheet

STOCK BARREL HEIGHTS

1'-6"	2'-0"	4'-0"
	3'-0"	5'-0"



	750 Howard Street Elmira, NY 14904 Fax: (607) 737-0291 Phone: (607) 733-0568 1-800-472-4335	Title: 6' Dia. Manhole	Drawn By: JPS
	Scale: Not To Scale	Drawing No.: 07010500	
	Date: 7-1-05		